

ECT-SB , ECT-SBI , ECT-SBN series



Vertical Multistage Centrifugal In-line Pumps

ECT PUMP NEMA 60HZ



PUMP

The ECT-SB, ECT-SBI and ECT-SBN pumps are non-self priming vertical multistage pump of in-line design with flange oval and Victaulic of equally sized suction and discharge ports. Stage construction with stainless steel impellers, chambers and pressure casing. All pumps are equipped with a cartridge type mechanical seal for easy maintenance.

ECT-SB, ECT-SBI and ECT-SBN pumps have different pump sizes and various numbers of stages to provide the flow and the pressure required.

APPLICSTIONS

WATER SUPPLY AND PRESSURE BOOSTING

Pressure boosting in buildings, hotels, residential complexes
Pressure booster stations, supply of water networks
Pressure boosting for industrial water supply

LIGHT INDUSTRY

Washing and cleaning systems
Car washing facilities
Fire fighting systems
Process water systems
Machine tools (cooling lubricants)

HEATING, VENTILATION AND AIR-CONDITIONING

Boilers
Induction heating
Heat exchangers
Refrigerators
Cooling towers and systems
Temperature control systems

IRRIGATION AND AGRICULTURE

Greenhouses
Sprinkler irrigation
Field irrigation (flooding)

WATER TREATMENT

Water softeners and de-mineralization
Reverse Osmosis systems
Distillation systems
Filtration
Ultra-filtration systems

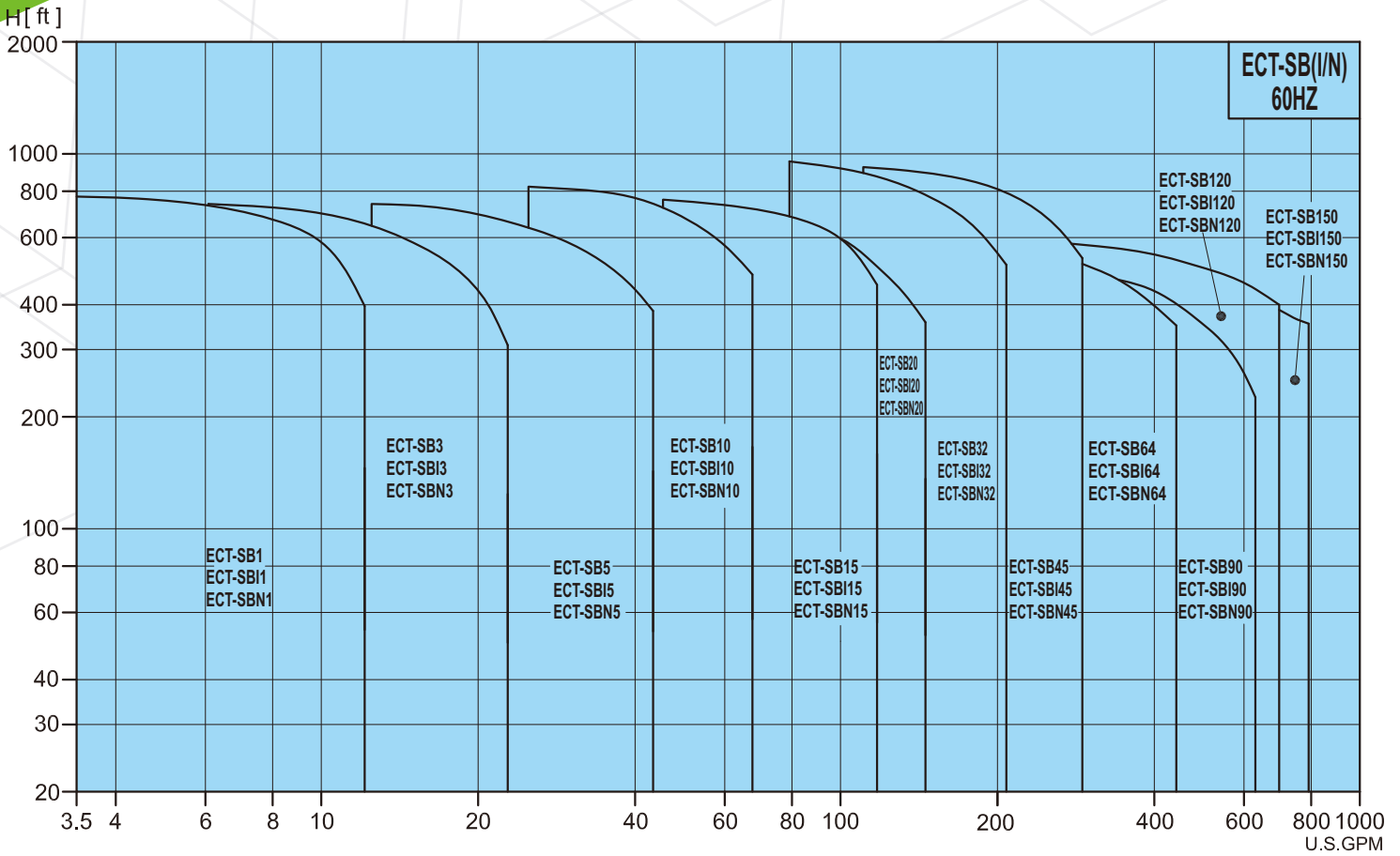
ECT-SB , ECT-SBI , ECT-SBN



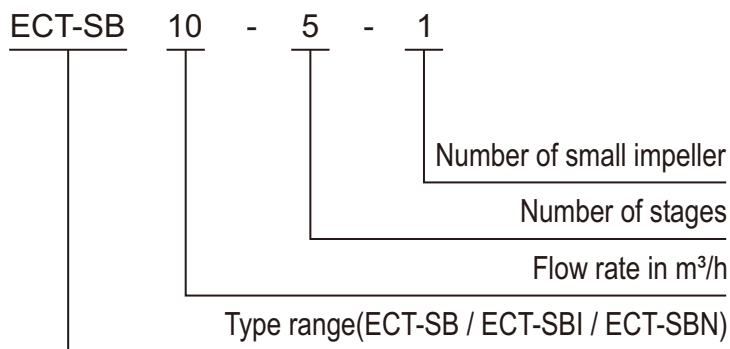
ECT PUMP

General Data

PERFORMANCE RANGE



MODEL CODE



ECT-SB , ECT-SBI , ECT-SBN

Product Data



ECT PUMP

Range		ECT-SB, ECT-SBI, ECT-SBN					
		1	3	5	10	15	20
60Hz							
Nominal flow	m ³ /h	1.2	3.6	6	12	18	24
	GPM	5.2	15.8	26.4	52.8	79.2	105.6
Flow range	m ³ /h	0.8-2.9	1.5-5.4	3-10	6-15.5	10.5-28	12.5-35
	GPM	4.2-13	8.4-25.8	13.2-44	26.4-70	47.9-123	56.7-154
Max. pressure	bar	23.5	23.3	23	24.5	23.5	20.5
	PSI	340	337	333	355	340	297
Fluid temperature	°C	-15 °C to +120°C					
	°F	7 °F to 248 °F					

Version						
ECT-SB Cast iron and stainless steel EN 1.4301/AISI 304	●	●	●	●	●	●
ECT-SBI Stainless steel EN 1.4301/AISI 304	●	●	●	●	●	●
ECT-SBN Stainless steel EN 1.4401/AISI 316	●	●	●	●	●	●

ECT-SB Pipe Connection						
Flange (ANSI)	DN 25/ DN 32	DN 25/ DN 32	DN 25/ DN 32	DN 40	DN 50	DN 50
ECT-SBI, ECT-SBN Pipe Connection						
Flange (ANSI)	DN 25/ DN 32	DN 25/ DN 32	DN 25/ DN 32	DN 40	DN 50	DN 50
Victaulic-connections	R 1 ¹ / ₄ DN 32	R 1 ¹ / ₄ DN 32	R 1 ¹ / ₄ DN 32	R 2 DN50	R 2 DN50	R 2 DN50

Mechanical Seals						
SiC/SiC	Standard					
Seals						
EPDM	Standard					
Viton						

* Flange standards : Refer to dimensional drawings

ECT-SB , ECT-SBI , ECT-SBN

Product Data



ECT PUMP

Range		ECT-SB, ECT-SBI, ECT-SBN					
		32	45	64	90	120	150
60Hz							
Nominal flow	m ³ /h	28	54	77	108	140	180
	GPM	167	237	339	475	616	792
Flow range	m ³ /h	18-48	26-70	36-102	54-146	60-160	75-180
	GPM	79-211	114-308	158-449	237-642	264-704	330-946
Max. pressure	bar	27	26	17.8	15.9	18.5	15.3
	PSI	391	377	258	230	268	221
Fluid temperature	°C	-15 °C to +120°C					
	°F	7 °F to 248 °F					

Version						
ECT-SB Cast iron and stainless steel EN 1.4301/AISI 304	●	●	●	●	●	●
ECT-SBI Stainless steel EN 1.4301/AISI 304	●	●	●	●	●	●
ECT-SBN Stainless steel EN 1.4401/AISI 316	●	●	●	●	●	●

ECT-SB Pipe Connection						
Flange (ANSI)	DN 65	DN80	DN100	DN100	DN125	DN125
ECT-SBI, ECT-SBN Pipe Connection						
Flange (ANSI)	DN 65	DN80	DN100	DN100	DN125	DN125
Victaulic-connections	N/A	N/A	N/A	N/A	N/A	N/A

Mechanical Seals						
SiC/SiC	Standard					
Seals						
EPDM	Standard					
Viton						

* Flange standards : Refer to dimensional drawings

ECT-SB , ECT-SBI , ECT-SBN



ECT PUMP

Product Data

MECHANICAL SEAL

Standard Cartridge type mechanical seal made of Silicon Carbide/Silicon Carbide/EPDM or Viton.

Based on the type of application, alternative materials are available for the seal and the elastomers.

The cartridge type mechanical seal can be replaced in minutes without special tools and without dismantling the pump.

List of Materials

Q : Silicon carbide	E : EPDM
U : Tungsten carbide	V : Viton
B : Carbon	



Type of Seal

Seal Type	ECT-SB/SBI/SBN		
	1/3/5/10/15/20 /32/45/64/90	120/150	
		0.5-60HP	75-100HP
Mechanical Seals			
S: O-ring seal Cartridge type	●	●	
B: Rubber bellows seal Cartridge type			●
QQ	●	●	●
UU	Optional	Optional	
QB	Optional	Optional	
UB	Optional	Optional	
Seals			
E	●	●	●
V	Optional	Optional	Optional

Minimum inlet pressure - NPSHA

Calculation of the inlet pressure "H" is recommended in these situations:

- The liquid temperature is high.
- The flow is significantly higher than the rated flow.
- Water is drawn from depths.
- Water is drawn through long pipes.
- Inlet conditions are poor.

To avoid cavitation, make sure that there is a minimum pressure on the suction side of the pump.

The maximum suction lift "H" in feet can be calculated as follows:

$$H = P_b - NPSHR - H_f - H_v - H_s$$

P_b = Barometric pressure in feet absolute.

(Barometric pressure can be set to 33.9 feet. At sea level. In closed systems, p_b indicates system pressure in feet.)

NPSHR = Net Positive Suction Head Required in feet.

(To be read from the NPSHR curve at the highest flow the pump will be delivering.)

H_f = Friction loss in suction pipe in feet. (At the highest flow the pump will be delivering.)

H_v = Vapor pressure in feet. (To be read from the vapor pressure scale. "H_v" depends on the liquid temperature "T_m").

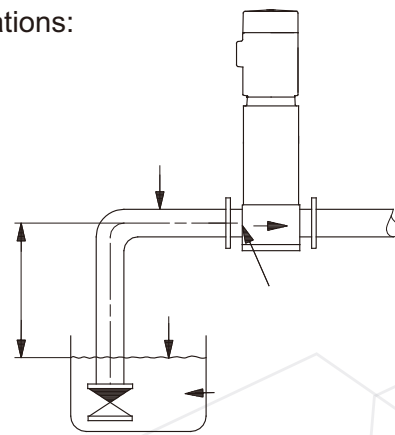
H_s = Safety margin = minimum 2.0 feet.

If the "H" calculated is positive, the pump can operate at a suction lift of maximum "H" feet.

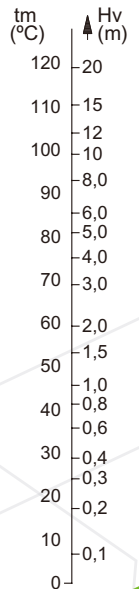
If the "H" calculated is negative, an inlet pressure of minimum "H" feet is required.

Note: In order to avoid cavitation never, select a pump whose duty point lies too far to the right on the NPSHR curve.

Always check the NPSHR value of the pump at the highest possible flow.



Minimum inlet pressure - NPSHR



ECT-SB , ECT-SBI , ECT-SBN

Motor Data



ECT PUMP

Pole	Motor Type			Frame	
	HP	kW	PH	TEFC motors (C-face)	ODP motors (C-face)
2	1/3	0.25	1 3	56C	---
	1/2	0.37	1 3	56C	---
	3/4	0.55	1 3	56C	---
	1	0.75	1 3	56C	---
	1 1/2	1.1	1 3	56C	---
	2	1.5	1 3	56C	---
	3	2.2	1 3	182TC	---
	5	3.7	1 3	213TC 182TC	---
	7 1/2	5.5	1 3	213TC	---
	10	7.5	1 3	213TC	---
	15	11	3	254TC	254TC
	20	15	3	254TC	254TC
	25	18.5	3	284TSC	284TSC
	30	22	3	286TSC	284TSC
	40	30	3	286TSC	286TSC
	50	37	3	326TSC	324TSC
	60	45	3	364TSC	324TSC
	75	55	3	365TSC	364TSC
	100	75	3	405TSC	365TSC

ECT-SB , ECT-SBI , ECT-SBN



ECT PUMP

Max. Operating Pressure and Inlet Pressures

MAXIMUM INLET PRESSURE

The following table shows the maximum permissible inlet pressure. However, the current inlet pressure + the pressure against a closed valve must always be lower than the maximum permissible operating pressure.

If the maximum permissible operating pressure is exceeded, the bearing in the motor may be damaged and the life of the shaft seal reduced.

*Rule to follow : The inlet pressure + the pressure against a closed valve < Max. Operating pressure.

Pump type	Stages	Max. Operating Pressure	Stages	Max. Inlet Pressures
ECT-SB(I/N) 1	2 - 27	25 bar (363 psi)	2 - 25	10 bar
			27	15 bar
ECT-SB(I/N) 3	2 - 25	25 bar (363 psi)	2 - 15	10 bar
			17 - 25	15 bar
ECT-SB(I/N) 5	2 - 24	25 bar (363 psi)	2 - 9	10 bar
			10 - 24	15 bar
ECT-SB(I/N) 10	1 - 10	16 bar (232 psi)	1 - 5	8 bar
	12 - 17	25 bar (363 psi)	6 - 17	10 bar
ECT-SB(I/N) 15	1 - 8	16 bar (232 psi)	1 - 2	8 bar
	9 - 12	25 bar (363 psi)	3 - 12	10 bar
ECT-SB(I/N) 20	1 - 7	16 bar (232 psi)	1	8 bar
	8 - 10	25 bar (363 psi)	2 - 10	10 bar
ECT-SB(I/N) 32	(1-1) - 5	16 bar (232 psi)	(1-1) - 2	4 bar
	(6-2) - (10-2)	30 bar (435 psi)	(3-2) - 6	10 bar
			(7-2) - (10-2)	15 bar
ECT-SB(I/N) 45	(1-1) - 4	16 bar (232 psi)	(1-1) - 1	4 bar
	(5-2) - 7	30 bar (435 psi)	(2-2) - 3	10 bar
			(4-2) - 7	15 bar
ECT-SB(I/N) 64	(1-1) - 3	16 bar (232 psi)	(1-1)	4 bar
	(4-2) - (5-2)	30 bar (435 psi)	1 - (2-1)	10 bar
			2 - (5-2)	15 bar
ECT-SB(I/N) 90	(1-1) - 3	16 bar (232 psi)	(1-1) - (2-2)	10 bar
	(4-2)	30 bar (435 psi)	(2-1) - (4-2)	15 bar
ECT-SB(I/N) 120	1 - (5-2)	30 bar (435 psi)	1	10 bar
			(2-2) - (3-1)	15 bar
			3 - (5-2)	20 bar
ECT-SB(I/N) 150	(1-1) - (4-2)	30 bar (435 psi)	(1-1)	10 bar
			1 - 2	15 bar
			(3-2) - (4-2)	20 bar

Example of operating and inlet pressures

The values for operating and inlet pressures shown in the tables must not be considered individually but must always be compared, see the following examples:

Example 1:

The following pump type has been selected: SB 64-6
 Max. operating pressure: 30 bar
 Max. inlet pressure: 15 bar
 Discharge pressure against a closed valve: 16.7 bar ,
 This pump is not allowed to start at an inlet pressure of 15 bar ,
 but at an inlet pressure of 30 bar - 16.7 bar = 13.3 bar.

Example 2:

The following pump type has been selected: SB 10-2
 Maximum operating pressure: 16 bar.
 Maximum inlet pressure: 8 bar.
 Discharge pressure against a closed valve: 2.9 bar (97ft),
 This pump is allowed to start at an inlet pressure of 8 bar,
 as the discharge pressure is only 2.9 bar,
 which results in an operating pressure of 8 bar + 2.9 bar = 10.9 bar.
 On the contrary, the max. Operating pressure of this pump is
 limited to 16 bar as a higher operating pressure will require an
 inlet pressure of more than 8 bar.

ECT-SB , ECT-SBI , ECT-SBN

Technical Data



ECT PUMP

PUMPED LIQUIDS

ECT-SB(I,N) pumps can handle a wide variety of liquids, each with its own characteristic.

ECT-SB(I)

Non-corrosive liquids

For fluid transfer, circulation and pressure boosting of cold or hot clean water.

ECT-SBN

Industrial liquids

Light acids

The fluids covered in the list are not complete. Data on the application limits of different pump materials when handling any of the listed fluids are considered to be the best choices. However, the table is intended as a general guide only, and cannot replace actual testing of the pumped fluids and pump materials under specific working conditions.

When choosing the pump version, sufficient attention should be given to the flow medium, such as density, solidification point, viscosity as well as ex-protection requirement. The limits of applicability of the pumps, based on pressure and temperature must also be considered.

● Recommended

Pumped fluid	"Fluid Concentration, temperature"	ECT-SB (I)		ECT-SBN	
		EPDM	Viton	EPDM	Viton
Acetic acid anhydride	25°C (77°F)			●	
Alkaline cleaner		●			
Aluminium sulphate	10%, 25°C (77°F)				●
Ammonia water (A. hydroxide)	20%, 40°C (104°F)	●			
Ammonia hydrogen carbonate	10%, 40°C (104°F)	●		●	
Benzoic acid	10%, 90°C (194°F)				●
Boric acid	Unsaturated solution, 60°C (140°F)				●
Butanol	60°C (140°F)	●			
Calcium acetate	30%, 50°C (122°F)	●			
Calcium hydroxide	Saturated solution, 50°C (122°F)	●			
Chromic acid	1%, 20°C (68°F)				●
Condensate	90°C (194°F)	●			
Copper sulphate	Unsaturated solution, 60°C (140°F)				●
Deionic (fully desalinated water)	50°C (122°F)			●	
Ethanol	100%, 20°C (68°F)	●			
Ethylene glycol/Diethylene glycol	40%, 70°C (158°F)	●	●	●	●
Fixer	25°C (77°F)				●
Formic acid	5%, 20°C (68°F)			●	

ECT-SB , ECT-SBI , ECT-SBN

Technical Data



ECT PUMP

Pumped fluid	"Fluid Concentration, temperature"	ECT-SB (I)		ECT-SBN	
		EPDM	Viton	EPDM	Viton
Fruit juice	50°C (122°F)				●
Glycerine	50%, 50°C (122°F)	●			
Heating oil (Light)		●			●
Hydraulic oil	100%, 100°C (212°F)		●		
Isopropanol		●			
Lactic acid	10%, 20°C (68°F)				●
Linoleic acid	100%, 20°C (68°F)	●			
Linseed oil	60°C (140°F)		●		
Liqueur	60°C (140°F)				●
Maize oil	80°C (176°F)		●		
Maleic acid	50%, 50°C (122°F)				●
Methanol	100%, 20°C (68°F)	●			
Motor oil	100%, 80°C (176°F)	●			
Oil-water-mixture	100°C (212°F)		●		
Oxalic acid	1%, 20°C (68°F)			●	
Peanut oil	100%, 80°C (176°F)		●		
Phosphoric acid	20%, 20°C (68°F)			●	
Polyglycols	90°C (194°F)		●		●
Polyethylene glycols	40%, 70°C (158°F)	●			
Potassium carbonate	10%, 60°C (140°F)	●			
Potassium hydrogen carbonate	10%, 60°C (140°F)	●			
Potassium permanganate	5%, 20°C (68°F)			●	
Potassium sulphate	Unsaturated solution, 80°C (176°F)			●	
Rapeseed oil	100%, 80°C (176°F)		●		
Silicone oil	100%		●		
Sodium carbonate	10%, 60°C (140°F)			●	
Sodium hydroxide	25%, 50°C (122°F)			●	
Sodium nitrate	Unsaturated solution, 80°C (176°F)			●	
Sodium phosphate	5%, 100°C (212°F)			●	
Sodium sulphate	10%, 60°C (140°F)			●	
Sulphuric acid	5%, 25°C (77°F)				●
Water					
Swimming pool water	35°C (95°F)	●CSBIBI		●	
Deionic	50°C (122°F)			●	
Distilled water	50°C (122°F)			●	
Decarbonated water				●	
Soft water				●	
Heating water				●	
Boiler water				●	
Pure water				●	
Rinsing water		●CSBIBI		●	

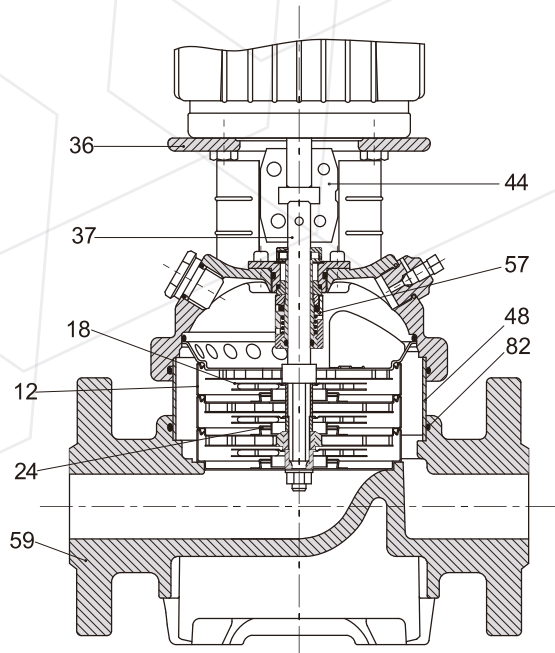
ECT-SB , ECT-SBI , ECT-SBN

Construction

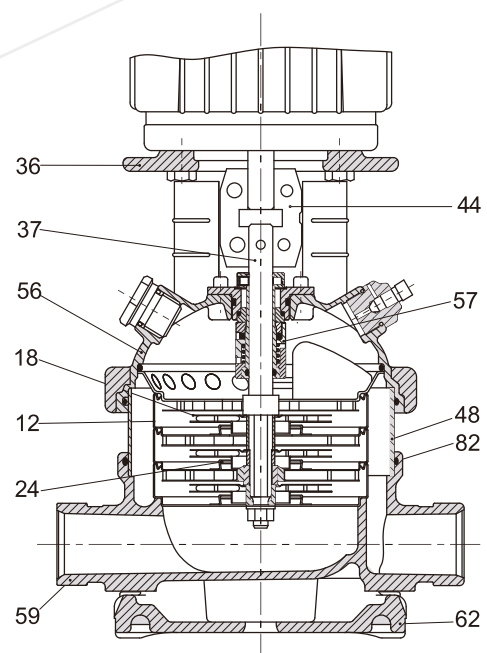


ECT PUMP

ECT-SB 1, 3, 5, 10, 15, 20



ECT-SBI(N) 1, 3, 5, 10, 15, 20



CONSTRUCTION

Pos.	Name	Material	ECT-SB 1,3,5,10,15,20	ECT-SBI 1,3,5,10,15,20	ECT-SBN 1,3,5,10,15,20
			Standard USA	Standard USA	Standard USA 6
3	Pump head	Cast Iron	ASTM 25B	ASTM 65-45-12	ASTM 65-45-12
56	Pump head cover	Stainless steel	N/A	AISI 304	AISI 316
18	Impeller	Stainless steel	AISI 304	AISI 304	AISI 316
37	Shaft	Stainless steel	AISI 431	AISI 431	AISI 316
48	Outer sleeve	Stainless steel	AISI 304	AISI 304	AISI 316
82	O-ring for outer sleeve	EPDM			
12	Chamber	Stainless steel	AISI 304	AISI 304	AISI 316
24	Neck ring	PTFE			
59	Base	Cast Iron	ASTM 35B	N/A	
		Stainless steel	N/A	AISI 304	AISI 316
62	Base plate	Cast Iron		ASTM 25B	ASTM 25B
44	coupling	Fe-Cu-C	MPIF FC0525	MPIF FC0525	MPIF FC0525
57	Mechanical seal	Cartridge type			

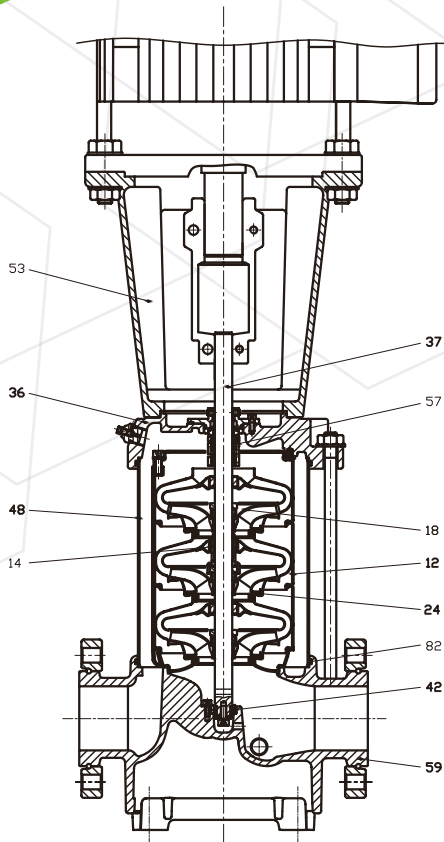
ECT-SB , ECT-SBI , ECT-SBN

Construction

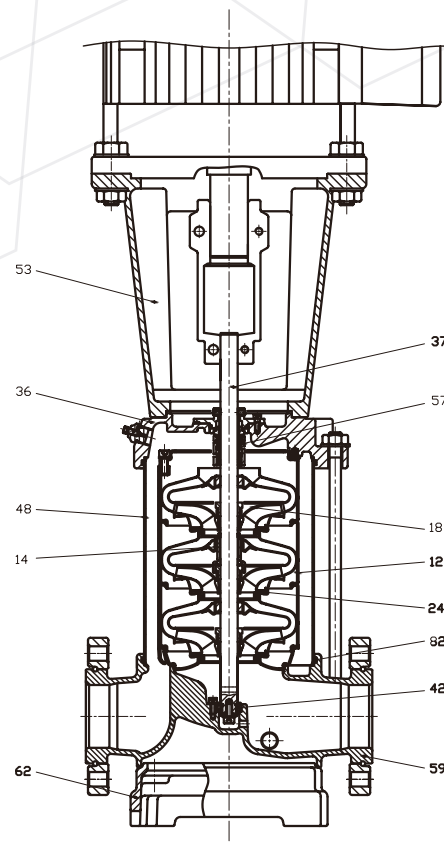


ECT PUMP

ECT-SB 32, 45, 64, 90



ECT-SBI(N) 32, 45, 64, 90



CONSTRUCTION

Pos.	Name	Material	ECT-SB 32,45,64,90	ECT-SBI 32,45,64,90	ECT-SBN 32,45,64,90
			Standard	Standard	Standard
			USA	USA	USA
36	Pump head	Cast Iron	ASTM 35B		
		Stainless steel		AISI 304	AISI 316
53	Motor Bracket	Cast Iron	ASTM 35B	ASTM 35B	ASTM 35B
18	Impeller	Stainless steel	AISI 304	AISI 304	AISI 316
37	Shaft	Stainless steel	AISI 431	AISI 431	AISI 316
48	Outer sleeve	Stainless steel	AISI 304	AISI 304	AISI 316
82	O-ring for outer sleeve	EPDM			
12	Chamber	Stainless steel	AISI 304	AISI 304	AISI 316
24	Neck ring	Carbon Fiber+ POB+PTFE			
59	Base	Cast Iron	ASTM 35B	N/A	
		Stainless steel	N/A	AISI 304	AISI 316
62	Base plate	Cast Iron	N/A	ASTM 35B	ASTM 35B
57	Mechanical seal	Cartridge type			
14	Bearing ring		Bronze		POB+Graphite+PTFE
42	Bottom bearing ring	Tungsten carbide/ Tungsten carbide			

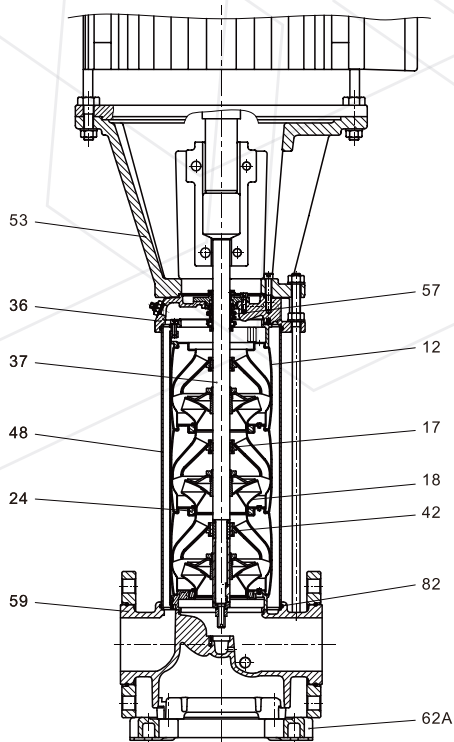
ECT-SB , ECT-SBI , ECT-SBN

Construction

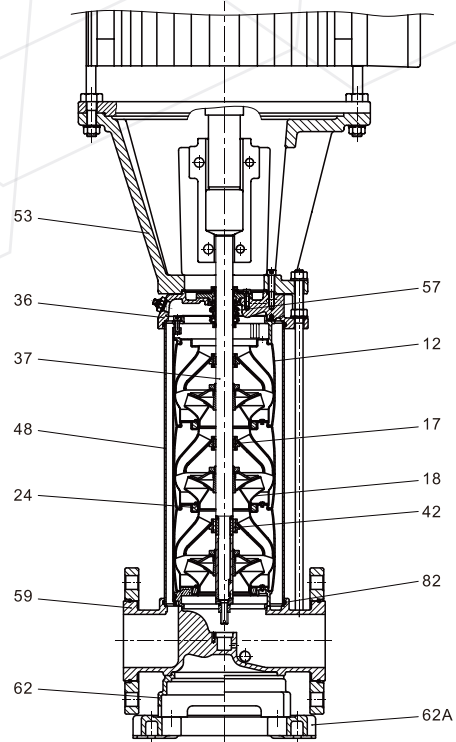


ECT PUMP

ECT-SB 120, 150



ECT-SBI(N)120, 150



CONSTRUCTION

Pos.	Name	Material	ECT-SB 120,150	ECT-SBI 120,150	ECT-SBN 120,150
			Standard	Standard	Standard
			USA	USA	USA
36	Pump head	Cast Iron	ASTM 35B	N/A	
		Stainless steel	N/A	AISI 304	AISI 316
53	Motor Bracket (15HP~60HP)	Cast Iron	ASTM 35B	ASTM 35B	ASTM 35B
	Motor Bracket (75HP~100HP)	Cast Iron	ASTM 65-45-12	ASTM 65-45-12	ASTM 65-45-12
17	Bearing ring	PTFE			
18	Impeller	Stainless steel	AISI 304	AISI 304	AISI 316
37	Shaft	Stainless steel	AISI 431	AISI 431	AISI 316
48	Outer sleeve	Stainless steel	AISI 304	AISI 304	AISI 316
82	O-ring for outer sleeve	EPDM			
12	Chamber	Stainless steel	AISI 304	AISI 304	AISI 316
24	Neck ring	PTFE			
59	Base	Cast Iron	ASTM 35B	N/A	
		Stainless steel	N/A	AISI 304	AISI 316
62	Base plate	Cast Iron	N/A	ASTM 65-45-12	ASTM 65-45-12
62A	Base plate	Cast Iron	ASTM 65-45-12	ASTM 65-45-12	ASTM 65-45-12
57	Mechanical seal	Cartridge type			
42	Bottom bearing ring	SiC / SiC			

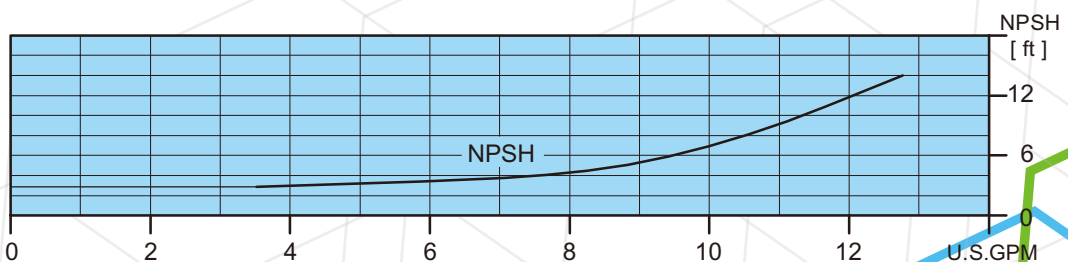
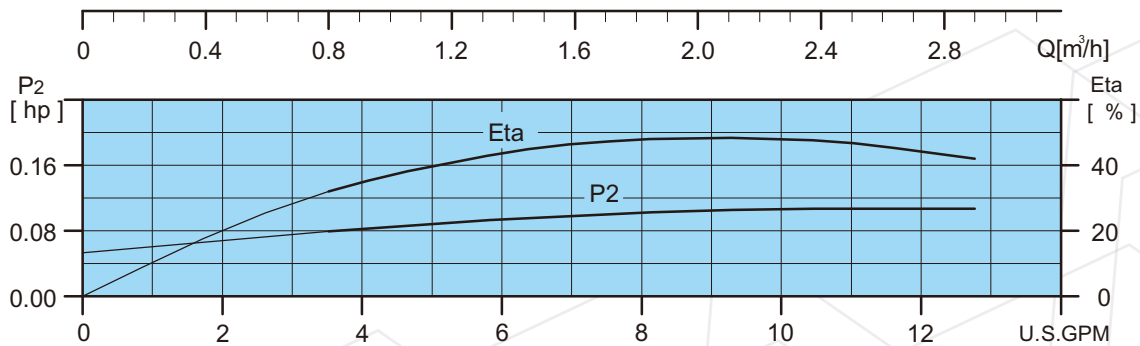
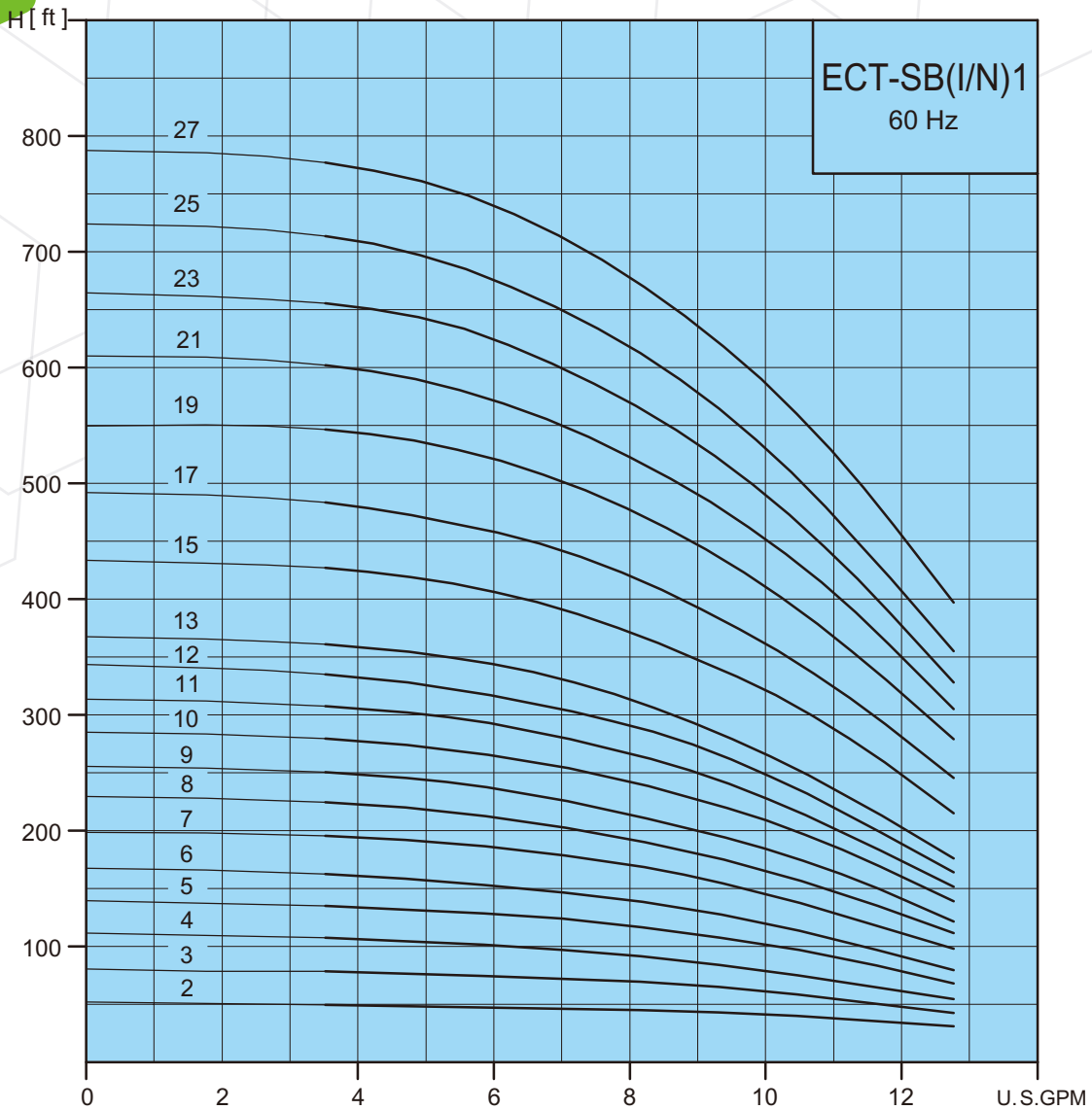
ECT-SB, ECT-SBI, ECT-SBN

Performance Curves



ECT PUMP

ECT-SB, ECT-SBI, ECT-SBN 1



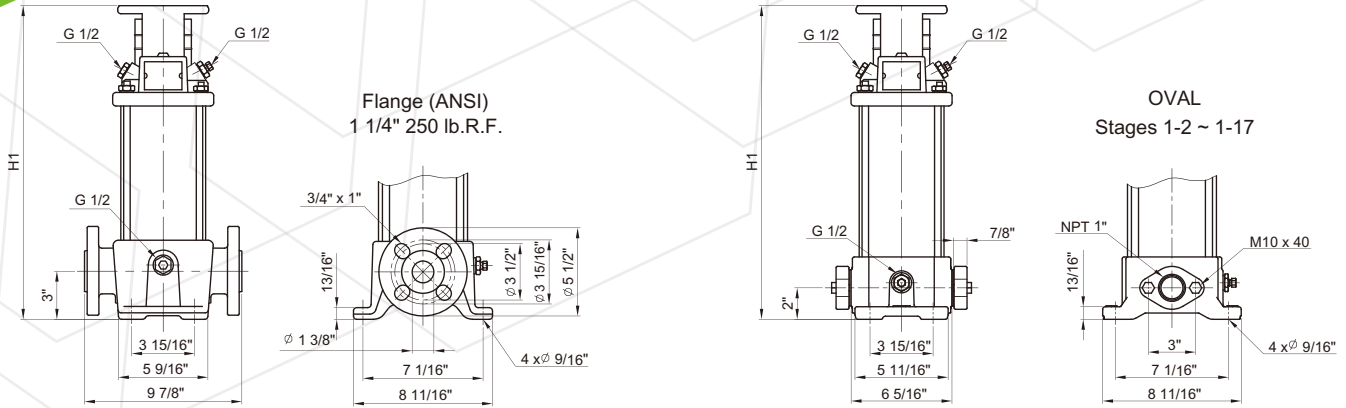
ECT-SB, ECT-SBI, ECT-SBN

Technical Data



ECT PUMP

ECT-SB 1



Pump type	Recommend motor of HP			ECT-SB				
	P ₂			NEMA Frame TEFC motors	Dimension[inch]		Weights[lbs]	
	[HP]	[kW]	[PH]		ANSI flange H1	OVAL H1	ANSI flange	OVAL
ECT-SB1-2	1/3	0.25	1 / 3	56C	11.93	10.94	41	32
ECT-SB1-3	1/3	0.25	1 / 3	56C	11.93	10.94	41	32
ECT-SB1-4	1/2	0.37	1 / 3	56C	12.64	11.65	42	33
ECT-SB1-5	1/2	0.37	1 / 3	56C	13.35	12.36	43	33
ECT-SB1-6	3/4	0.55	1 / 3	56C	14.06	13.07	44	34
ECT-SB1-7	3/4	0.55	1 / 3	56C	14.76	13.78	44	35
ECT-SB1-8	1	0.75	1 / 3	56C	15.47	14.49	45	36
ECT-SB1-9	1	0.75	1 / 3	56C	16.18	15.20	46	37
ECT-SB1-10	1	0.75	1 / 3	56C	16.89	15.91	46	37
ECT-SB1-11	1 1/2	1.1	1 / 3	56C	17.60	16.61	47	38
ECT-SB1-12	1 1/2	1.1	1 / 3	56C	18.31	17.32	48	39
ECT-SB1-13	1 1/2	1.1	1 / 3	56C	19.02	18.03	49	40
ECT-SB1-15	2	1.5	1 / 3	56C	20.43	19.45	51	41
ECT-SB1-17	2	1.5	1 / 3	56C	21.85	20.87	52	43
ECT-SB1-19	2	1.5	1 / 3	56C	23.27	-	54	-
ECT-SB1-21	3	2.2	1 / 3	182TC	25.63	-	61	-
ECT-SB1-23	3	2.2	1 / 3	182TC	27.05	-	63	-
ECT-SB1-25	3	2.2	1 / 3	182TC	28.46	-	64	-
ECT-SB1-27	3	2.2	1 / 3	182TC	29.84	-	66	-

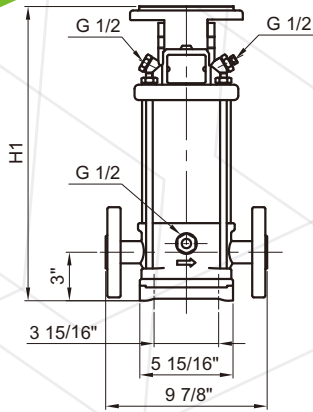
ECT-SB , ECT-SBI , ECT-SBN

Technical Data

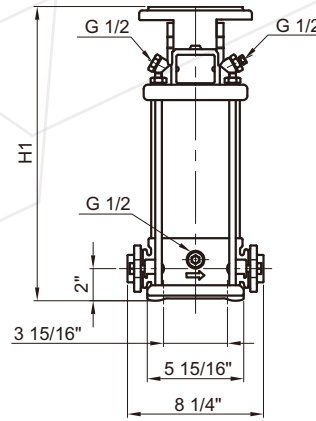
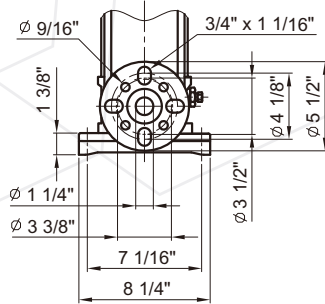


ECT PUMP

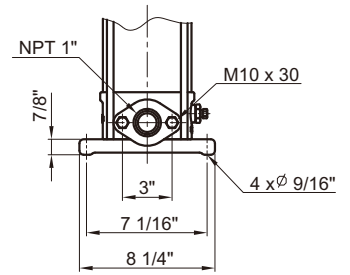
ECT-SBI 1



Flange (ANSI)
1 1/4" 300 lb.R.F.



OVAL
Stages 1-2 ~ 1-17



Pump type	Recommend motor of HP			NEMA Frame TEFC motors	ECT-SBI Dimension[inch]		Weights[lbs]	
	P ₂				ANSI flange	OVAL	ANSI flange	OVAL
	[HP]	[kW]	[PH]		H1	H1	ANSI flange	OVAL
ECT-SBI 1-2	1/3	0.25	1 / 3	56C	12.05	11.06	34	31
ECT-SBI 1-3	1/3	0.25	1 / 3	56C	12.05	11.06	34	31
ECT-SBI 1-4	1/2	0.37	1 / 3	56C	12.76	11.77	35	32
ECT-SBI 1 -5	1/2	0.37	1 / 3	56C	13.46	12.48	35	32
ECT-SBI 1-6	3/4	0.55	1 / 3	56C	14.17	13.19	36	33
ECT-SBI 1-7	3/4	0.55	1 / 3	56C	14.84	13.86	37	34
ECT-SBI 1-8	1	0.75	1 / 3	56C	15.55	14.57	38	35
ECT-SBI 1-9	1	0.75	1 / 3	56C	16.26	15.28	38	36
ECT-SBI 1-10	1	0.75	1 / 3	56C	16.97	15.98	39	36
ECT-SBI 1-11	1 1/2	1.1	1 / 3	56C	17.68	16.69	40	37
ECT-SBI 1-12	1 1/2	1.1	1 / 3	56C	18.39	17.40	41	38
ECT-SBI 1-13	1 1/2	1.1	1 / 3	56C	19.09	18.11	42	39
ECT-SBI 1-15	2	1.5	1 / 3	56C	20.55	19.57	43	40
ECT-SBI 1-17	2	1.5	1 / 3	56C	21.97	20.98	45	42
ECT-SBI 1-19	2	1.5	1 / 3	56C	23.39	-	46	-
ECT-SBI 1-21	3	2.2	1 / 3	182TC	25.73	-	54	-
ECT-SBI 1-23	3	2.2	1 / 3	182TC	27.15	-	56	-
ECT-SBI 1-25	3	2.2	1 / 3	182TC	28.56	-	57	-
ECT-SBI 1-27	3	2.2	1 / 3	182TC	29.98	-	59	-

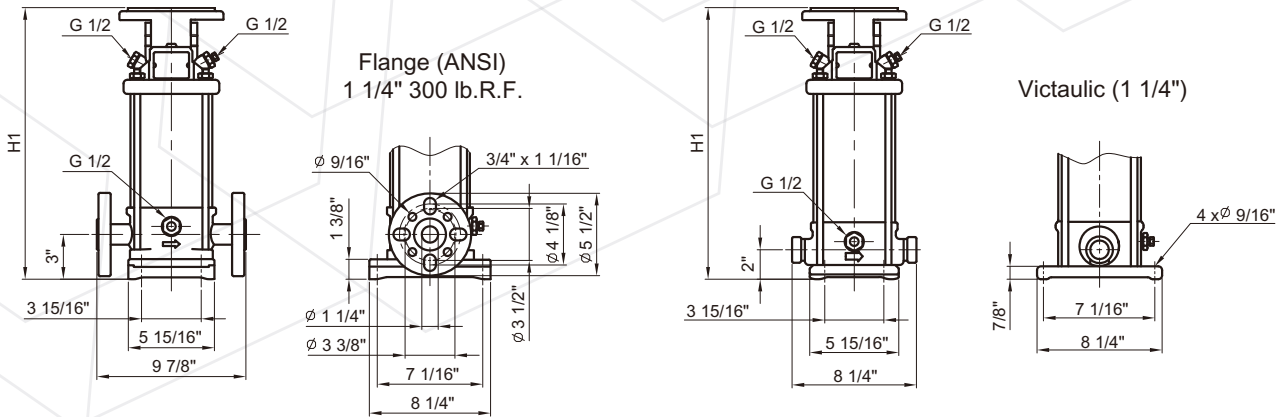
ECT-SB, ECT-SBI, ECT-SBN

Technical Data



ECT PUMP

ECT-SBN 1



Pump type	Recommend motor of HP			NEMA Frame TEFC motors	ECT-SBN		Weights[lbs]	
	P ₂				Dimension[inch]		ANSI flange	Victaulic
	[HP]	[kW]	[PH]		ANSI flange	Victaulic		
				H1	H1			
ECT-SBN1-2	1/3	0.25	1 / 3	56C	12.05	11.06	34	32
ECT-SBN1-3	1/3	0.25	1 / 3	56C	12.05	11.06	34	32
ECT-SBN1-4	1/2	0.37	1 / 3	56C	12.76	11.77	35	33
ECT-SBN1-5	1/2	0.37	1 / 3	56C	13.46	12.48	35	33
ECT-SBN1-6	3/4	0.55	1 / 3	56C	14.17	13.19	36	34
ECT-SBN1-7	3/4	0.55	1 / 3	56C	14.84	13.86	37	35
ECT-SBN1-8	1	0.75	1 / 3	56C	15.55	14.57	38	36
ECT-SBN1-9	1	0.75	1 / 3	56C	16.26	15.28	38	36
ECT-SBN1-10	1	0.75	1 / 3	56C	16.97	15.98	39	37
ECT-SBN1-11	1 1/2	1.1	1 / 3	56C	17.68	16.69	40	38
ECT-SBN1-12	1 1/2	1.1	1 / 3	56C	18.39	17.40	41	39
ECT-SBN1-13	1 1/2	1.1	1 / 3	56C	19.09	18.11	42	39
ECT-SBN1-15	2	1.5	1 / 3	56C	20.55	19.57	43	41
ECT-SBN1-17	2	1.5	1 / 3	56C	21.97	20.98	45	43
ECT-SBN1-19	2	1.5	1 / 3	56C	23.39	22.40	46	44
ECT-SBN1-21	3	2.2	1 / 3	182TC	25.73	24.74	54	52
ECT-SBN1-23	3	2.2	1 / 3	182TC	27.15	26.16	56	54
ECT-SBN1-25	3	2.2	1 / 3	182TC	28.56	27.58	57	55
ECT-SBN1-27	3	2.2	1 / 3	182TC	29.98	29.00	59	57

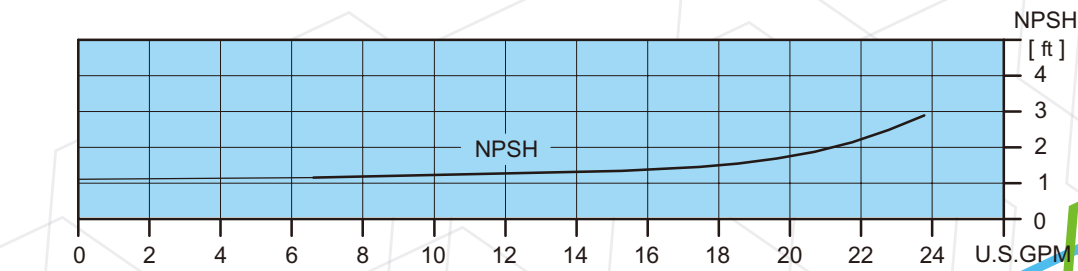
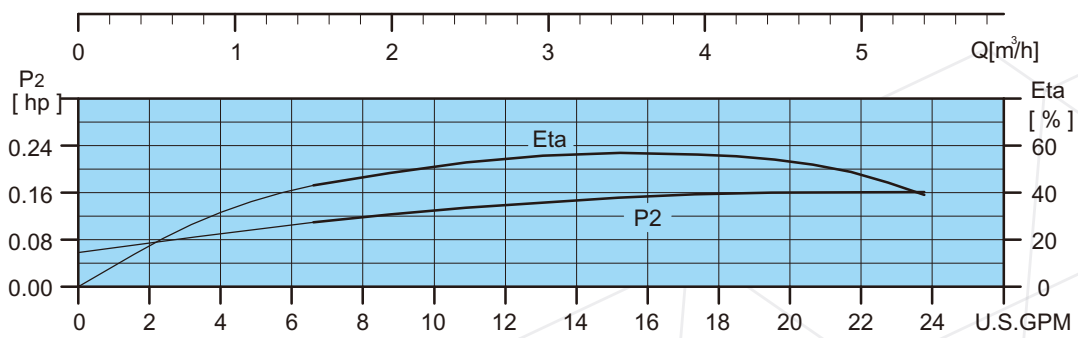
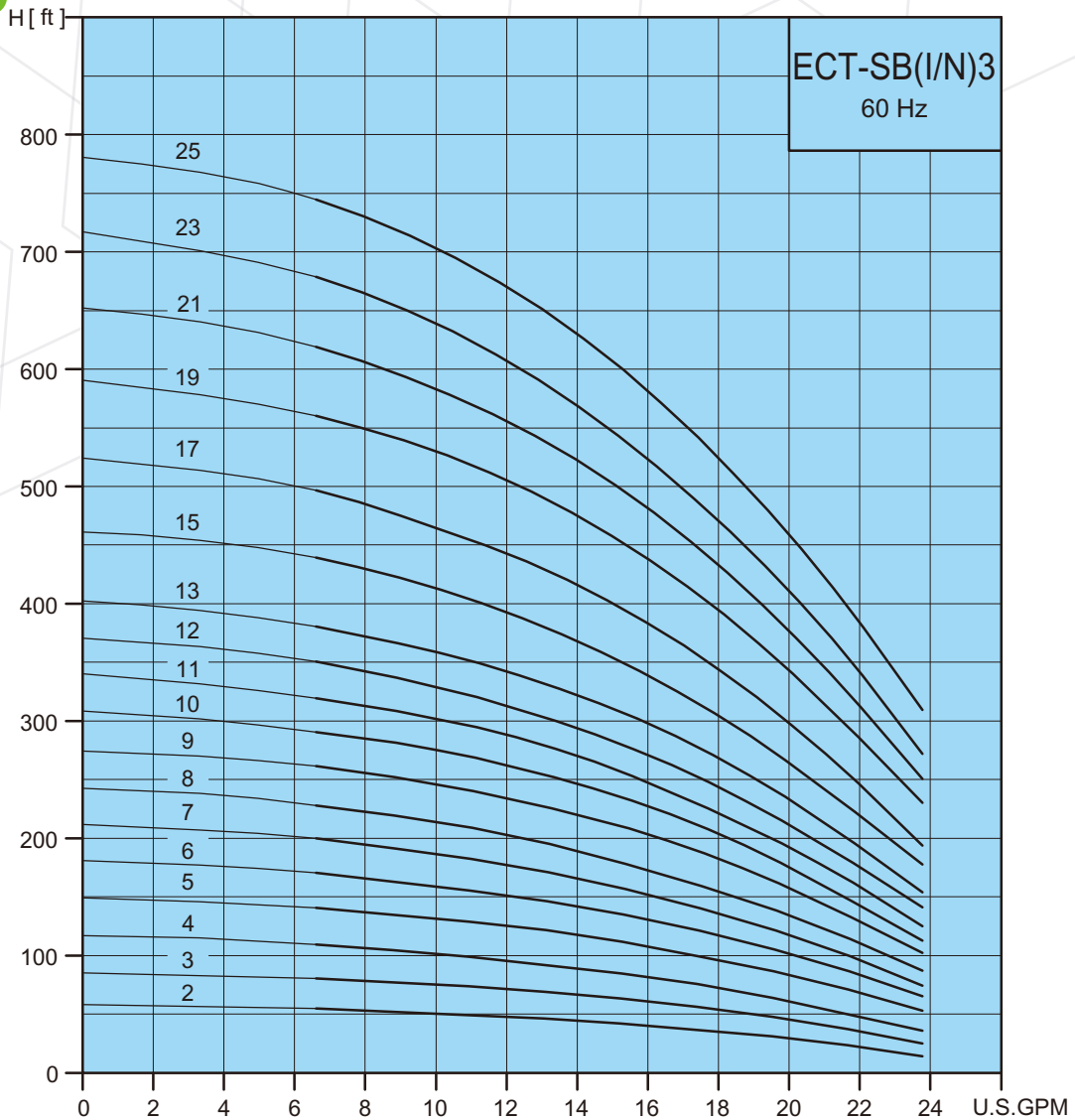
ECT-SB, ECT-SBI, ECT-SBN

Performance Curves



ECT PUMP

ECT-SB, ECT-SBI, ECT-SBN 3



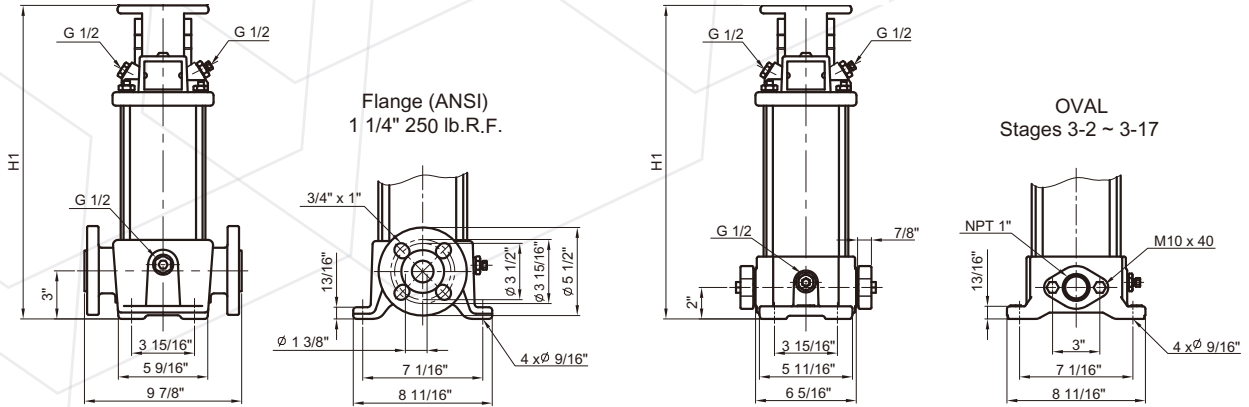
ECT-SB, ECT-SBI, ECT-SBN

Technical Data



ECT PUMP

ECT-SB 3



Pump type	Recommend motor of HP			NEMA Frame TEFC motors	ECT-SB Dimension[inch]		Weights[lbs]	
	P ₂				ANSI flange	OVAL	ANSI flange	OVAL
	[HP]	[kW]	[PH]		H1	H1	flange	
ECT-SB 3-2	1/3	0.25	1 / 3	56C	11.93	10.94	41	32
ECT-SB 3-3	1/2	0.37	1 / 3	56C	11.93	10.94	41	32
ECT-SB 3-4	3/4	0.55	1 / 3	56C	12.64	11.65	42	33
ECT-SB 3-5	3/4	0.55	1 / 3	56C	13.35	12.36	43	33
ECT-SB 3-6	1	0.75	1 / 3	56C	14.06	13.07	44	34
ECT-SB 3-7	1 1/2	1.1	1 / 3	56C	14.76	13.78	44	35
ECT-SB 3-8	1 1/2	1.1	1 / 3	56C	15.47	14.49	45	36
ECT-SB 3-9	1 1/2	1.1	1 / 3	56C	16.18	15.20	46	37
ECT-SB 3-10	2	1.5	1 / 3	56C	16.89	15.91	47	37
ECT-SB 3-11	2	1.5	1 / 3	56C	17.60	15.91	47	38
ECT-SB 3-12	2	1.5	1 / 3	56C	18.31	17.32	48	39
ECT-SB 3-13	3	2.2	1 / 3	182TC	21.38	20.39	55	46
ECT-SB-3-15	3	2.2	1 / 3	182TC	22.80	21.81	57	47
ECT-SB-3-17	3	2.2	1 / 3	182TC	24.37	23.39	58	49
ECT-SB-3-19	3	2.2	1 / 3	182TC	25.59	-	60	-
ECT-SB-3-21	5	3.7	1 / 3	182TC	27.01	-	61	-
ECT-SB-3-23	5	3.7	1 / 3	182TC	27.01	-	63	-
ECT-SB-3-25	5	3.7	1 / 3	182TC	28.43	-	64	-

* For the 5HP single phase TEFC motor, we provide 213TC Frame

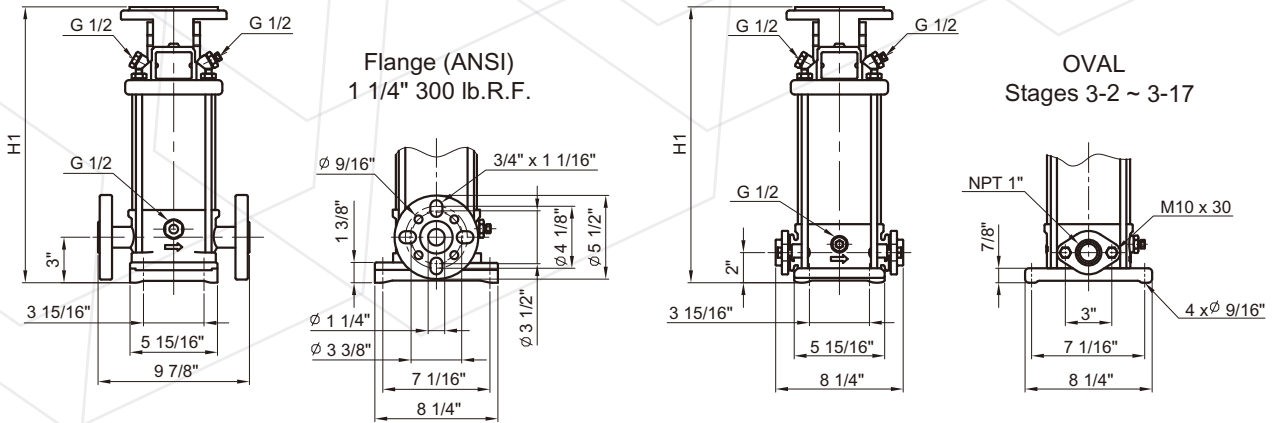
ECT-SB , ECT-SBI , ECT-SBN

Technical Data



ECT PUMP

ECT-SBI 3



Pump type	Recommend motor of HP			ECT-SBI				
	P ₂			NEMA Frame TEFC motors	Dimension[inch]		Weights[lbs]	
	[HP]	[kW]	[PH]		ANSI flange H1	OVAL H1	ANSI flange	OVAL
ECT-SBI 3-2	1/3	0.25	1 / 3	56C	12.05	11.06	34	31
ECT-SBI 3-3	1/2	0.37	1 / 3	56C	12.05	11.06	34	31
ECT-SBI 3-4	3/4	0.55	1 / 3	56C	12.76	11.77	35	32
ECT-SBI 3-5	3/4	0.55	1 / 3	56C	13.43	12.44	35	32
ECT-SBI 3-6	1	0.75	1 / 3	56C	14.13	13.15	36	33
ECT-SBI 3-7	1 1/2	1.1	1 / 3	56C	14.84	13.86	37	34
ECT-SBI 3-8	1 1/2	1.1	1 / 3	56C	15.55	14.57	38	35
ECT-SBI 3-9	1 1/2	1.1	1 / 3	56C	16.30	15.31	38	36
ECT-SBI 3-10	2	1.5	1 / 3	56C	17.01	16.02	39	36
ECT-SBI 3-11	2	1.5	1 / 3	56C	17.72	16.73	40	37
ECT-SBI 3-12	2	1.5	1 / 3	56C	18.43	17.44	41	38
ECT-SBI 3-13	3	2.2	1 / 3	182TC	20.06	19.07	48	45
ECT-SBI 3-15	3	2.2	1 / 3	182TC	21.48	20.49	49	46
ECT-SBI 3-17	3	2.2	1 / 3	182TC	22.89	21.91	51	48
ECT-SBI 3-19	3	2.2	1 / 3	182TC	24.50	-	52	-
ECT-SBI 3-21	5	3.7	1 / 3	182TC	25.73	-	54	-
ECT-SBI 3-23	5	3.7	1 / 3	182TC	27.15	-	56	-
ECT-SBI 3-25	5	3.7	1 / 3	182TC	28.56	-	57	-

* For the 5HP single phase TEFC motor, we provide 213TC Frame

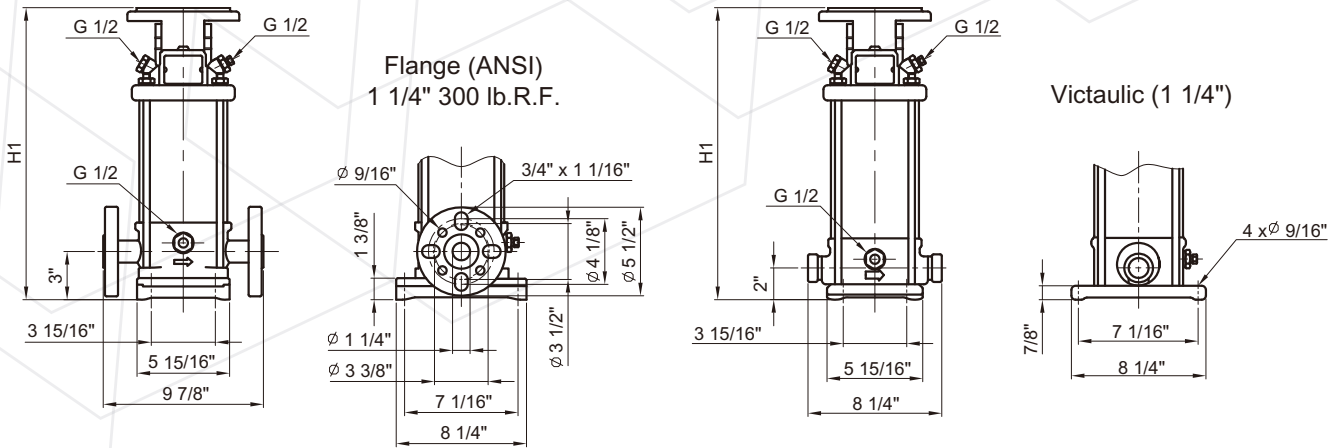
ECT-SB , ECT-SBI , ECT-SBN

Technical Data



ECT PUMP

ECT-SBN 3



Pump type	Recommend motor of HP			ECT-SBN				
	P ₂			NEMA Frame TEFC motors	Dimension[inch]		Weights[lbs]	
	[HP]	[kW]	[PH]		ANSI flange H1	Victaulic H1	ANSI flange	Victaulic
ECT-SBN 3-2	1/3	0.25	1 / 3	56C	12.05	11.06	34	32
ECT-SBN 3-3	1/2	0.37	1 / 3	56C	12.05	11.06	34	32
ECT-SBN 3-4	3/4	0.55	1 / 3	56C	12.76	11.77	35	33
ECT-SBN 3-5	3/4	0.55	1 / 3	56C	13.43	12.44	35	33
ECT-SBN 3-6	1	0.75	1 / 3	56C	14.13	13.15	36	34
ECT-SBN 3-7	1 1/2	1.1	1 / 3	56C	14.84	13.86	37	35
ECT-SBN 3-8	1 1/2	1.1	1 / 3	56C	15.55	14.57	38	36
ECT-SBN 3-9	1 1/2	1.1	1 / 3	56C	16.30	15.31	38	36
ECT-SBN 3-10	2	1.5	1 / 3	56C	17.01	16.02	39	37
ECT-SBN 3-11	2	1.5	1 / 3	56C	17.72	16.73	40	38
ECT-SBN 3-12	2	1.5	1 / 3	56C	18.43	17.44	41	39
ECT-SBN 3-13	3	2.2	1 / 3	182TC	20.06	19.07	48	46
ECT-SBN 3-15	3	2.2	1 / 3	182TC	21.48	20.49	49	47
ECT-SBN 3-17	3	2.2	1 / 3	182TC	22.89	21.91	51	49
ECT-SBN 3-19	3	2.2	1 / 3	182TC	24.50	23.50	52	50
ECT-SBN 3-21	5	3.7	1 / 3	182TC	25.73	24.74	54	52
ECT-SBN 3-23	5	3.7	1 / 3	182TC	27.15	26.16	56	54
ECT-SBN 3-25	5	3.7	1 / 3	182TC	28.56	27.58	57	55

* For the 5HP single phase TEFC motor, we provide 213TC Frame

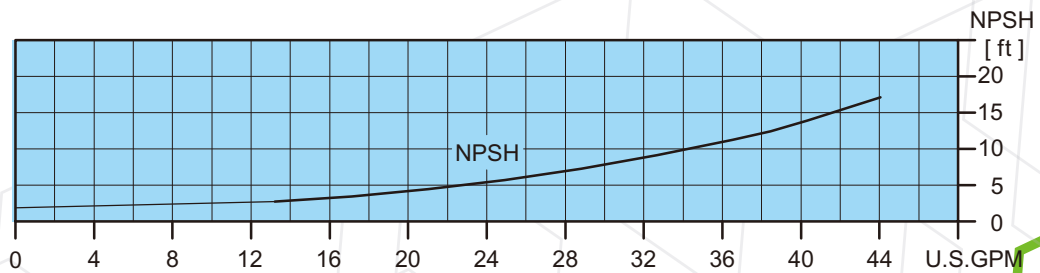
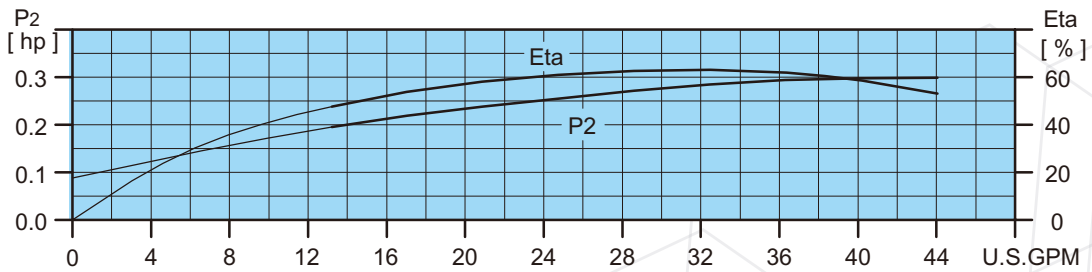
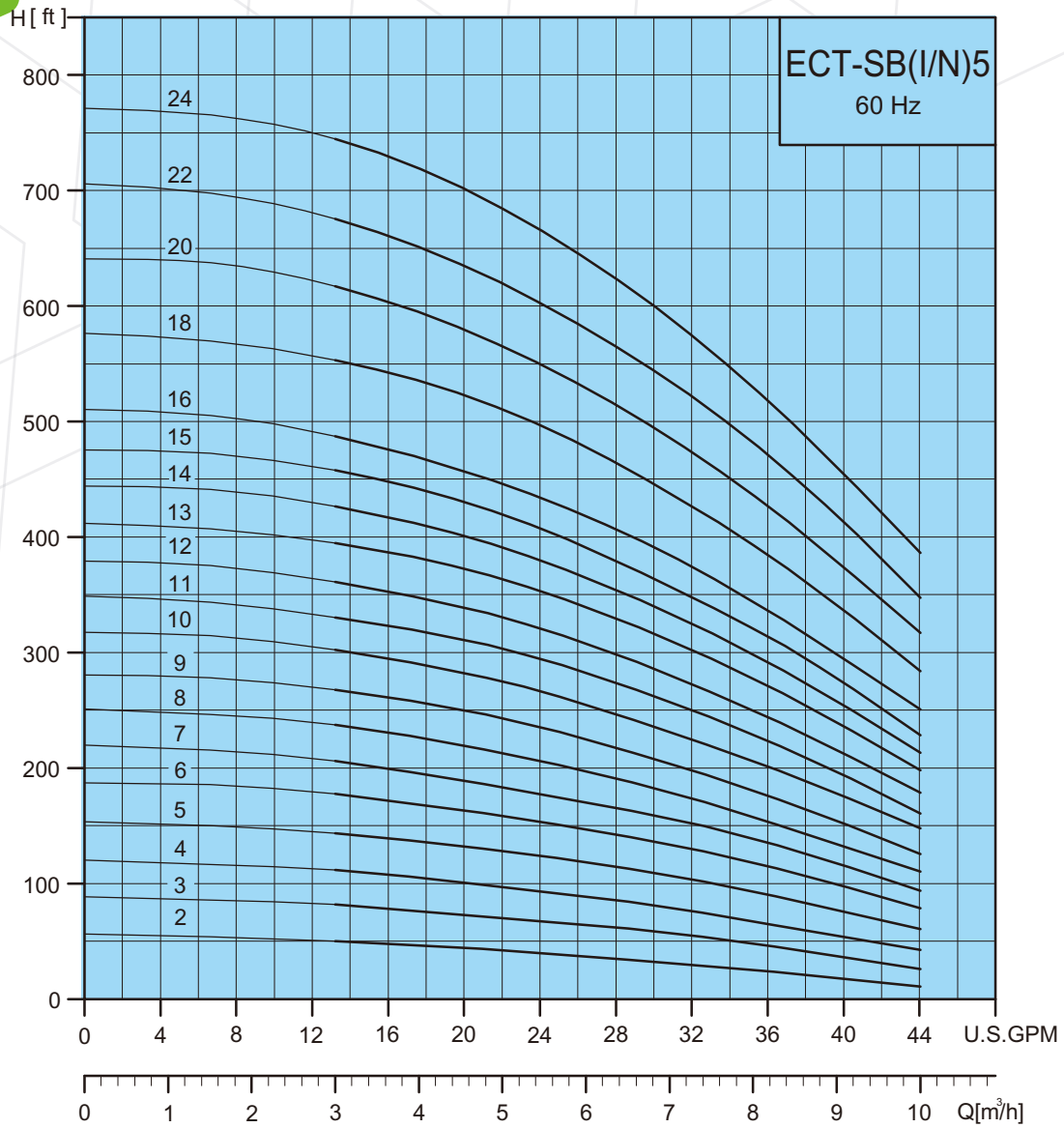
ECT-SB, ECT-SBI, ECT-SBN



Performance Curves

ECT PUMP

ECT-SB, ECT-SBI, ECT-SBN 5



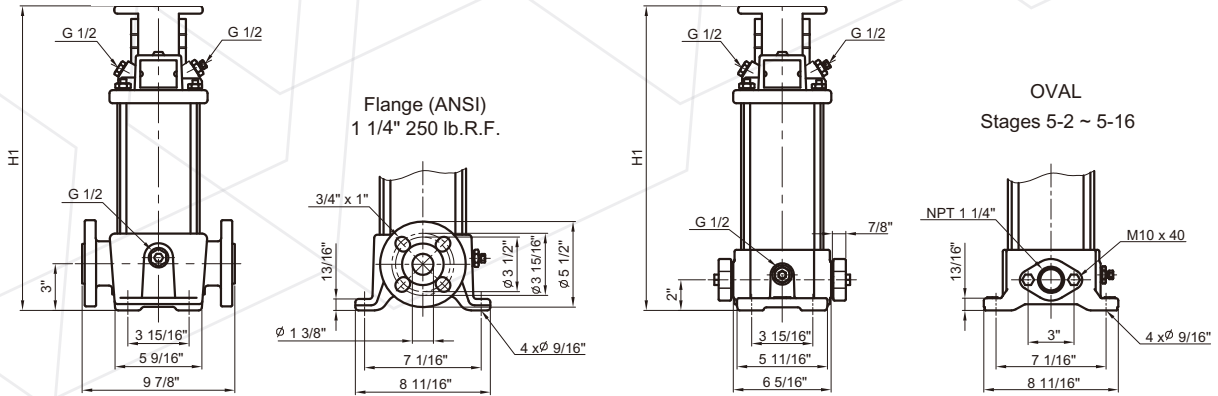
ECT-SB, ECT-SBI, ECT-SBN

Technical Data



ECT PUMP

ECT-SB 5



Pump type	Recommend motor of HP			NEMA Frame TEFC motors	ECT-SB Dimension[inch]		Weights[lbs]	
	P ₂				ANSI flange	OVAL	ANSI flange	OVAL
	[HP]	[kW]	[PH]		H1	H1		
ECT-SB5-2	3/4	0.55	1 / 3	56C	11.93	10.94	41	32
ECT-SB5-3	1	0.75	1 / 3	56C	12.99	12.01	42	33
ECT-SB5-4	1 1/2	1.1	1 / 3	56C	14.06	13.07	43	34
ECT-SB5-5	1 1/2	1.1	1 / 3	56C	15.12	14.30	44	35
ECT-SB5-6	2	1.5	1 / 3	56C	16.18	15.20	56	36
ECT-SB5-7	2	1.5	1 / 3	56C	17.24	16.26	46	37
ECT-SB5-8	3	2.2	1 / 3	182TC	19.25	18.27	53	44
ECT-SB5-9	3	2.2	1 / 3	182TC	20.31	19.33	54	46
ECT-SB5-10	3	2.2	1 / 3	182TC	21.34	20.35	56	47
ECT-SB5-11	5	3.7	1 / 3	182TC	22.40	21.42	57	48
ECT-SB5-12	5	3.7	1 / 3	182TC	23.46	22.48	58	49
ECT-SB5-13	5	3.7	1 / 3	182TC	24.53	23.54	59	50
ECT-SB5-14	5	3.7	1 / 3	182TC	25.59	24.61	60	51
ECT-SB5-15	5	3.7	1 / 3	182TC	26.65	25.67	61	52
ECT-SB5-16	5	3.7	1 / 3	182TC	27.72	26.73	62	53
ECT-SB5-18	7 1/2	5.5	1 / 3	213TC	30.47	-	70	-
ECT-SB5-20	7 1/2	5.5	1 / 3	213TC	32.60	-	72	-
ECT-SB5-22	7 1/2	5.5	1 / 3	213TC	34.72	-	74	-
ECT-SB5-24	7 1/2	5.5	1 / 3	213TC	36.85	-	76	-

* For the 5HP single phase TEFC motor, we provide 213TC Frame

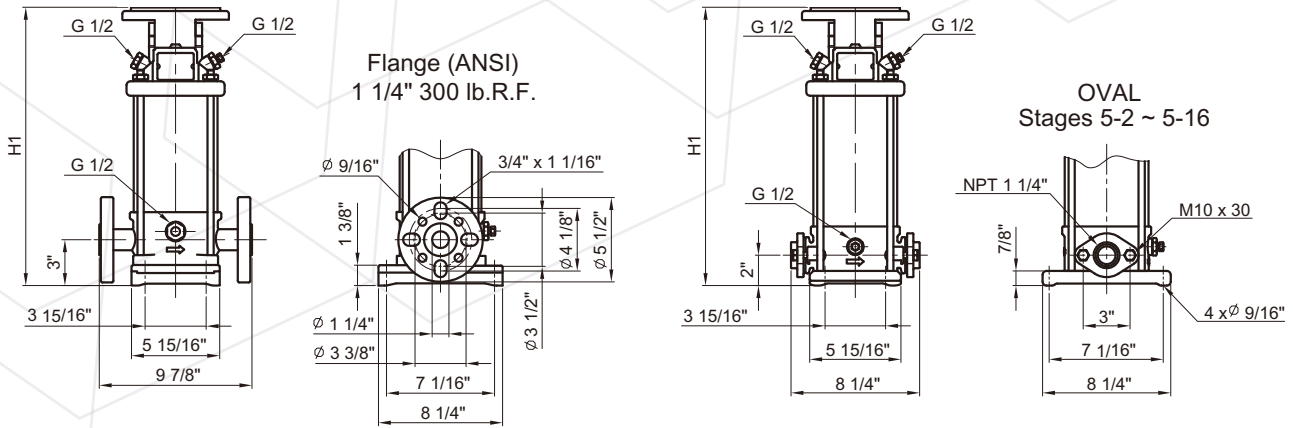
ECT-SB , ECT-SBI , ECT-SBN

Technical Data



ECT PUMP

ECT-SBI 5



Pump type	Recommend motor of HP			NEMA Frame TEFC motors	ECT-SBI Dimension[inch]		Weights[lbs]	
	P ₂				ANSI flange	OVAL	ANSI flange	OVAL
	[HP]	[kW]	[PH]		H1	H1	H1	H1
ECT-SBI 5-2	3/4	0.55	1 / 3	56C	12.0	11.1	33	31
ECT-SBI 5-3	1	0.75	1 / 3	56C	13.1	12.1	35	32
ECT-SBI 5-4	1 1/2	1.1	1 / 3	56C	14.1	13.1	36	34
ECT-SBI 5-5	1 1/2	1.1	1 / 3	56C	15.2	14.3	37	35
ECT-SBI 5-6	2	1.5	1 / 3	56C	16.3	15.3	38	36
ECT-SBI 5-7	2	1.5	1 / 3	56C	17.4	16.4	39	37
ECT-SBI 5-8	3	2.2	1 / 3	182TC	19.4	18.4	46	45
ECT-SBI 5-9	3	2.2	1 / 3	182TC	20.4	19.4	48	46
ECT-SBI 5-10	3	2.2	1 / 3	182TC	21.5	20.5	49	47
ECT-SBI 5-11	5	3.7	1 / 3	182TC	22.5	21.6	50	48
ECT-SBI 5-12	5	3.7	1 / 3	182TC	23.6	22.6	51	49
ECT-SBI 5-13	5	3.7	1 / 3	182TC	24.7	23.7	52	50
ECT-SBI 5-14	5	3.7	1 / 3	182TC	25.7	24.7	53	52
ECT-SBI 5-15	5	3.7	1 / 3	182TC	26.8	25.8	55	53
ECT-SBI 5-16	5	3.7	1 / 3	182TC	27.9	-	56	-
ECT-SBI 5-18	7 1/2	5.5	1 / 3	213TC	30.6	-	63	-
ECT-SBI 5-20	7 1/2	5.5	1 / 3	213TC	32.7	-	66	-
ECT-SBI 5-22	7 1/2	5.5	1 / 3	213TC	34.8	-	68	-
ECT-SBI 5-24	7 1/2	5.5	1 / 3	213TC	36.9	-	70	-

* For the 5HP single phase TEFC motor, we provide 213TC Frame

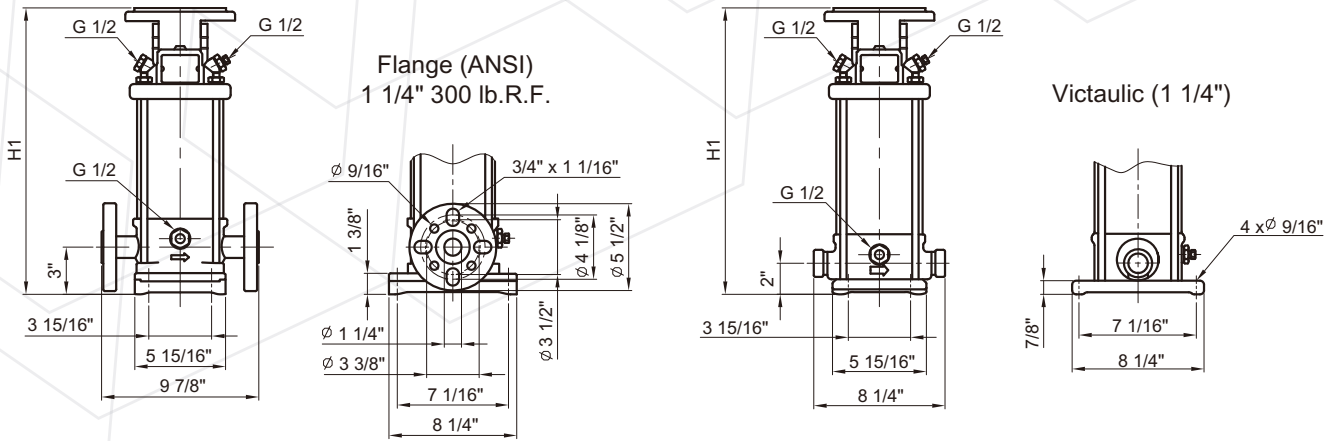
ECT-SB , ECT-SBI , ECT-SBN

Technical Data



ECT PUMP

ECT-SBN 5



Pump type	Recommend motor of HP			NEMA Frame TEFC motors	ECT-SBN		Weights[lbs]	
	P ₂				Dimension[inch]		ANSI flange	Victaulic
	[HP]	[kW]	[PH]		ANSI flange	Victaulic		
				H1	H1			
ECT-SBN 5-2	3/4	0.55	1 / 3	56C	12.0	11.1	33	31
ECT-SBN 5-3	1	0.75	1 / 3	56C	13.1	12.1	35	33
ECT-SBN 5-4	1 1/2	1.1	1 / 3	56C	14.1	13.1	36	34
ECT-SBN 5-5	1 1/2	1.1	1 / 3	56C	15.2	14.3	37	35
ECT-SBN 5-6	2	1.5	1 / 3	56C	16.3	15.3	38	36
ECT-SBN 5-7	2	1.5	1 / 3	56C	17.4	16.4	39	37
ECT-SBN 5-8	3	2.2	1 / 3	182TC	19.4	18.4	46	44
ECT-SBN 5-9	3	2.2	1 / 3	182TC	20.4	19.4	48	46
ECT-SBN 5-10	3	2.2	1 / 3	182TC	21.5	20.5	49	47
ECT-SBN 5-11	5	3.7	1 / 3	182TC	22.5	21.6	50	48
ECT-SBN 5-12	5	3.7	1 / 3	182TC	23.6	22.6	51	49
ECT-SBN 5-13	5	3.7	1 / 3	182TC	24.7	23.7	52	50
ECT-SBN 5-14	5	3.7	1 / 3	182TC	25.7	24.7	53	51
ECT-SBN 5-15	5	3.7	1 / 3	182TC	26.8	25.8	55	53
ECT-SBN 5-16	5	3.7	1 / 3	182TC	27.9	26.9	56	54
ECT-SBN 5-18	7 1/2	5.5	1 / 3	213TC	30.6	29.6	63	61
ECT-SBN 5-20	7 1/2	5.5	1 / 3	213TC	32.7	31.7	66	64
ECT-SBN 5-22	7 1/2	5.5	1 / 3	213TC	34.8	33.8	68	66
ECT-SBN 5-24	7 1/2	5.5	1 / 3	213TC	36.9	36.0	70	68

* For the 5HP single phase TEFC motor, we provide 213TC Frame

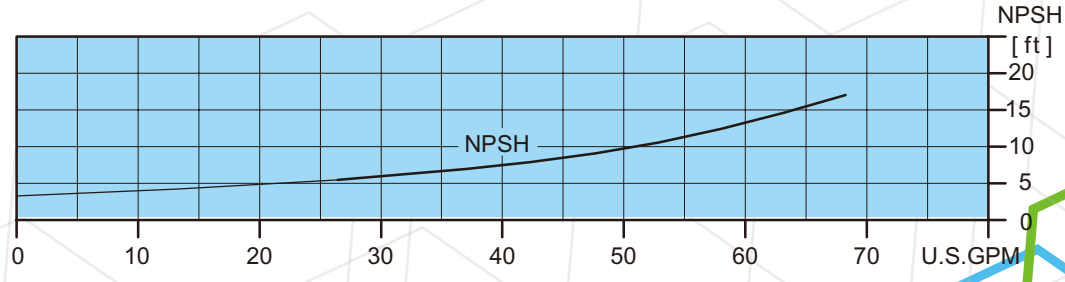
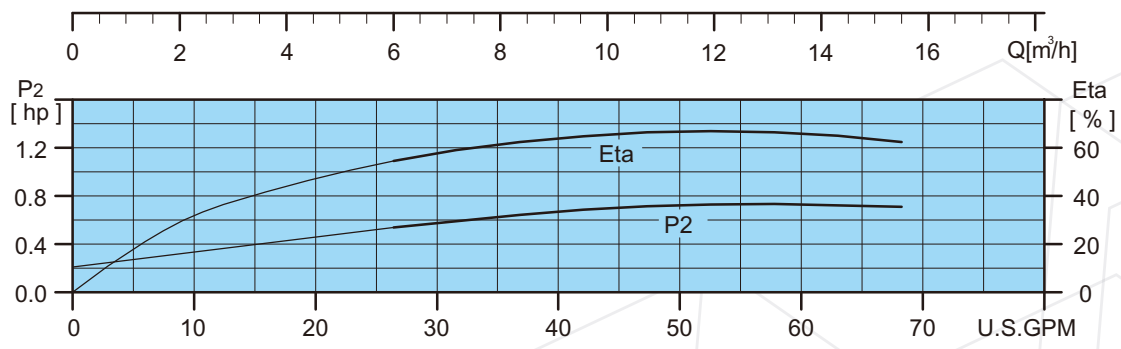
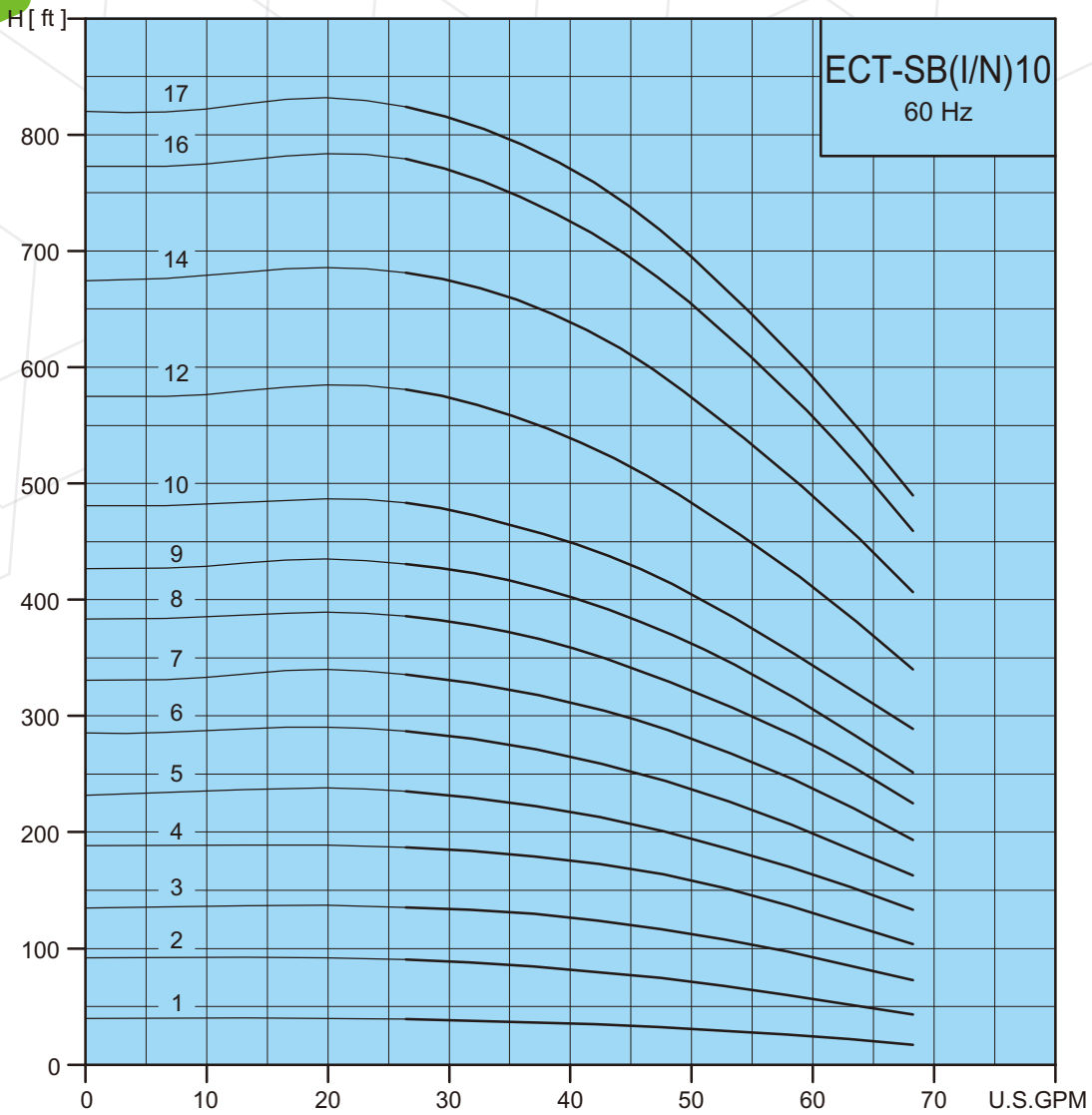
ECT-SB, ECT-SBI, ECT-SBN

Performance Curves



ECT PUMP

ECT-SB, ECT-SBI, ECT-SBN 10



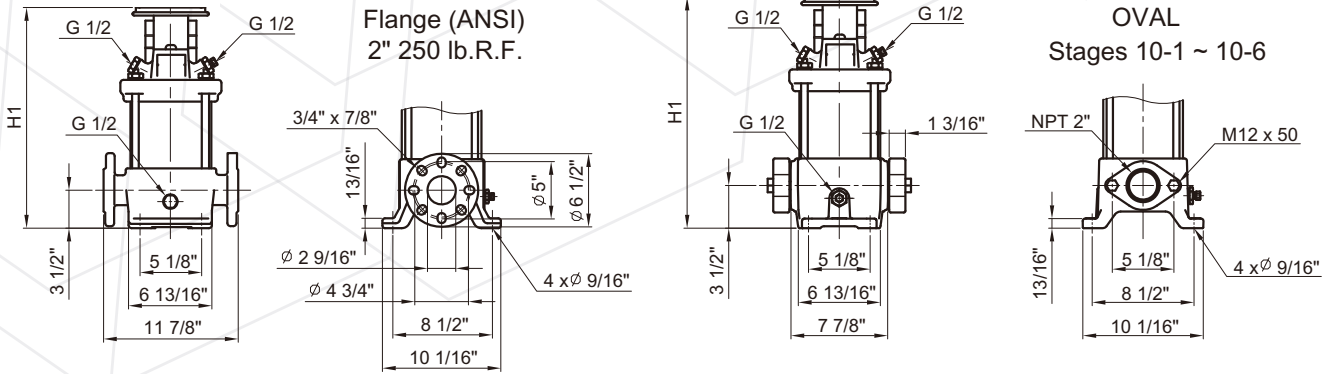
ECT-SB, ECT-SBI, ECT-SBN

Technical Data



ECT PUMP

ECT-SB 10



Pump type	Recommend motor of HP			ECT-SB					
	P ₂			NEMA Frame TEFC motor s	NEMA Frame ODP motors	Dimension[inch]		Weights[lbs]	
	[HP]	[kW]	[PH]			H1		ANSI flange	OVAL
ECT-SB 10-1	3/4	0.55	1 / 3	56C	-	15.08	15.08	76	64
ECT-SB 10-2	1 1/2	1.1	1 / 3	56C	-	15.08	15.08	77	65
ECT-SB 10-3	3	2.2	1 / 3	182TC	-	17.2	17.2	93	81
ECT-SB 10-4	3	2.2	1 / 3	182TC	-	18.39	18.39	95	83
ECT-SB 10-5	5	3.7	1 / 3	182TC	-	19.57	19.57	97	85
ECT-SB 10-6	5	3.7	1 / 3	182TC	-	20.75	20.75	99	87
ECT-SB 10-7	5	3.7	1 / 3	182TC	-	21.31	-	101	-
ECT-SB 10-8	7 1/2	5.5	1 / 3	213TC	-	23.68	-	111	-
ECT-SB 10-9	7 1/2	5.5	1 / 3	213TC	-	24.86	-	113	-
ECT-SB 10-10	7 1/2	5.5	1 / 3	213TC	-	26.04	-	115	-
ECT-SB 10-12	10	7.5	1 / 3	213TC	-	28.4	-	120	-
ECT-SB 10-14	10	7.5	1 / 3	213TC	-	30.07	-	124	-
ECT-SB 10-16	15	11	3	254TC	254TC	35.75	-	138	-
ECT-SB 10-17	15	11	3	254TC	254TC	36.93	-	140	-

* For the 5HP single phase TEFC motor, we provide 213TC Frame

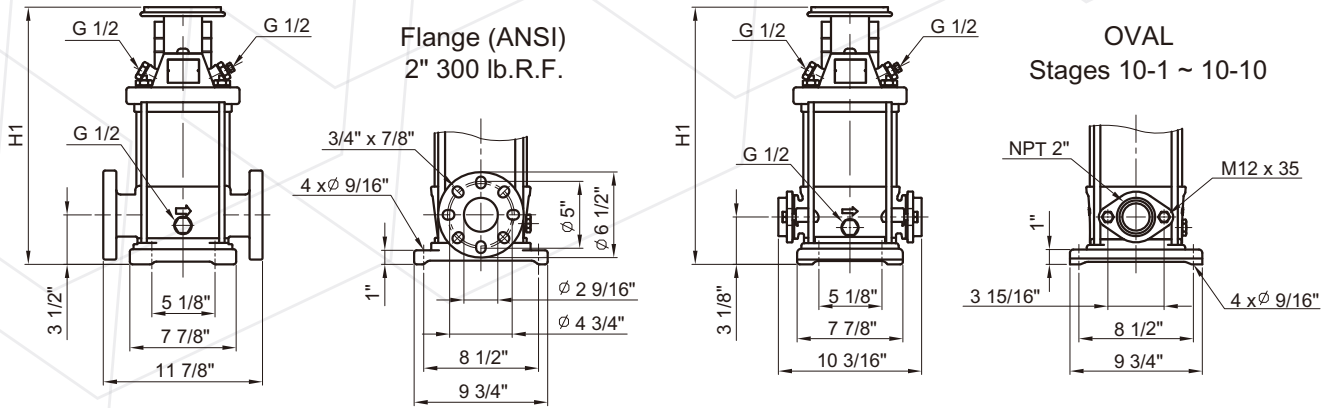
ECT-SB , ECT-SBI , ECT-SBN

Technical Data



ECT PUMP

ECT-SBI 10



Pump type	Recommend motor of HP			ECT-SBI					
	P ₂			NEMA Frame TEFC motors	NEMA Frame ODP motors	Dimension[inch]		Weights[lbs]	
	[HP]	[kW]	[PH]			H1		ANSI flange	OVAL
ECT-SBI 10-1	3/4	0.55	1 / 3	56C	-	14.96	14.53	60	56
ECT-SBI 10-2	1 1/2	1.1	1 / 3	56C	-	14.96	14.53	60	56
ECT-SBI 10-3	3	2.2	1 / 3	182TC	-	17.15	16.71	84	81
ECT-SBI 10-4	3	2.2	1 / 3	182TC	-	18.35	17.91	87	83
ECT-SBI 10-5	5	3.7	1 / 3	182TC	-	19.53	19.09	89	85
ECT-SBI 10-6	5	3.7	1 / 3	182TC	-	20.71	20.28	91	87
ECT-SBI 10-7	5	3.7	1 / 3	182TC	-	21.25	20.81	93	89
ECT-SBI 10-8	7 1/2	5.5	1 / 3	213TC	-	23.62	23.19	103	99
ECT-SBI 10-9	7 1/2	5.5	1 / 3	213TC	-	24.8	24.37	105	101
ECT-SBI 10-10	7 1/2	5.5	1 / 3	213TC	-	25.98	25.55	107	103
ECT-SBI 10-12	10	7.5	1 / 3	213TC	-	28.34	-	111	-
ECT-SBI 10-14	10	7.5	1 / 3	213TC	-	30.01	-	116	-
ECT-SBI 10-16	15	11	3	254TC	254TC	35.69	-	130	-
ECT-SBI 10-17	15	11	3	254TC	254TC	36.89	-	133	-

* For the 5HP single phase TEFC motor, we provide 213TC Frame

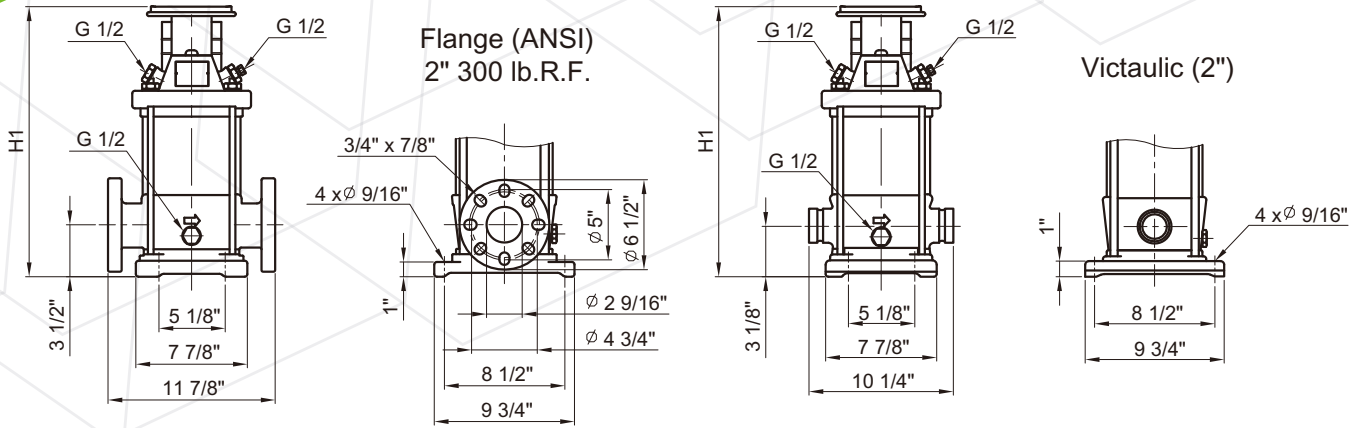
ECT-SB, ECT-SBI, ECT-SBN

Technical Data



ECT PUMP

ECT-SBN 10



Pump type	Recommend motor of HP			ECT-SBN					
	P ₂			NEMA Frame TEFC motors	NEMA Frame ODP motors	Dimension[inch]		Weights[lbs]	
	[HP]	[kW]	[PH]			H1		ANSI flange	Victaulic
ECT-SBN 10-1	3/4	0.55	1 / 3	56C	-	14.96	14.53	60	58
ECT-SBN 10-2	1 1/2	1.1	1 / 3	56C	-	14.96	14.53	60	59
ECT-SBN 10-3	3	2.2	1 / 3	182TC	-	17.15	16.71	84	83
ECT-SBN 10-4	3	2.2	1 / 3	182TC	-	18.35	17.91	87	85
ECT-SBN 10-5	5	3.7	1 / 3	182TC	-	19.53	19.09	89	88
ECT-SBN 10-6	5	3.7	1 / 3	182TC	-	20.71	20.28	91	90
ECT-SBN 10-7	5	3.7	1 / 3	182TC	-	21.25	20.81	93	92
ECT-SBN 10-8	7 1/2	5.5	1 / 3	213TC	-	23.62	23.19	103	101
ECT-SBN 10-9	7 1/2	5.5	1 / 3	213TC	-	24.8	24.37	105	104
ECT-SBN 10-10	7 1/2	5.5	1 / 3	213TC	-	25.98	25.55	107	106
ECT-SBN 10-12	10	7.5	1 / 3	213TC	-	28.34	27.91	111	110
ECT-SBN 10-14	10	7.5	1 / 3	213TC	-	30.01	29.58	116	115
ECT-SBN 10-16	15	11	3	254TC	254TC	35.69	35.26	130	129
ECT-SBN 10-17	15	11	3	254TC	254TC	36.89	37.62	133	131

* For the 5HP single phase TEFC motor, we provide 213TC Frame

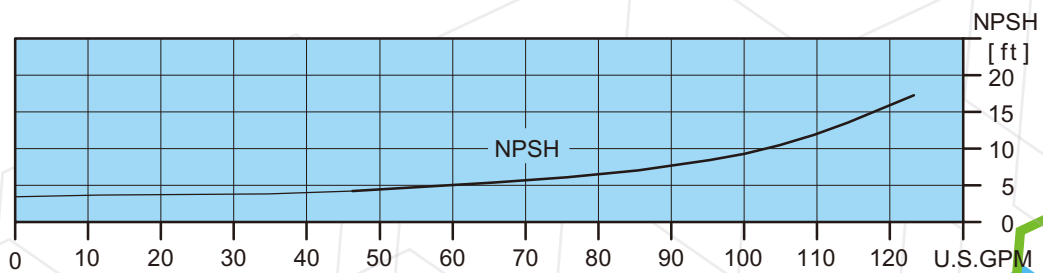
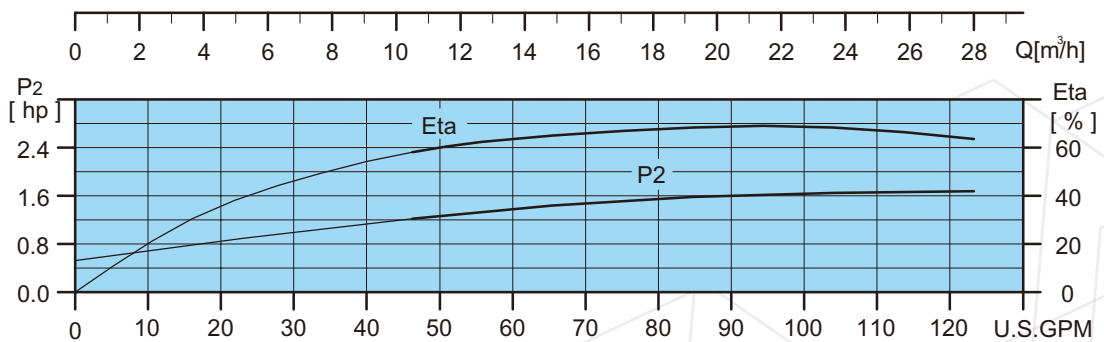
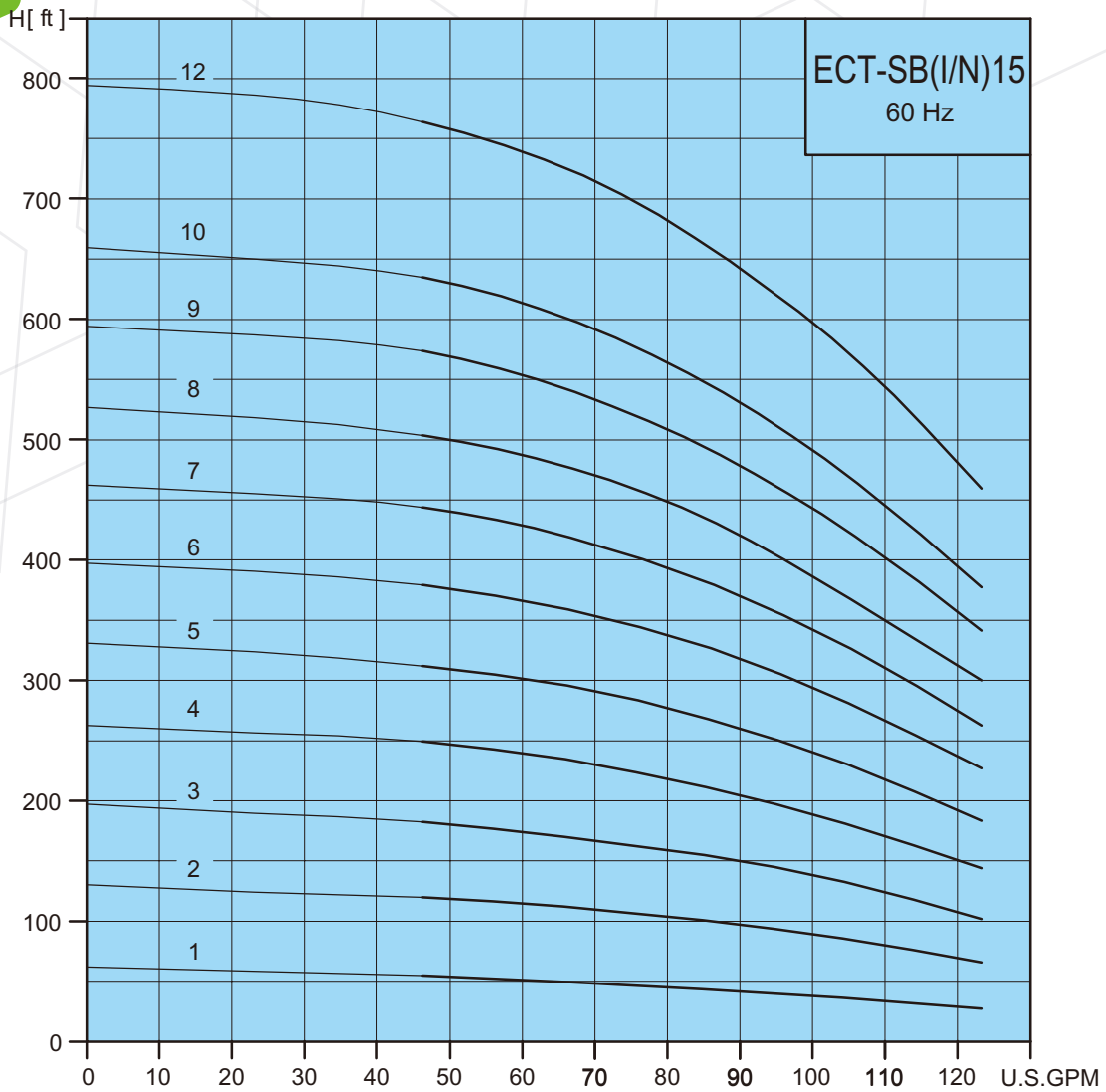
ECT-SB, ECT-SBI, ECT-SBN

Performance Curves



ECT PUMP

ECT-SB, ECT-SBI, ECT-SBN 15



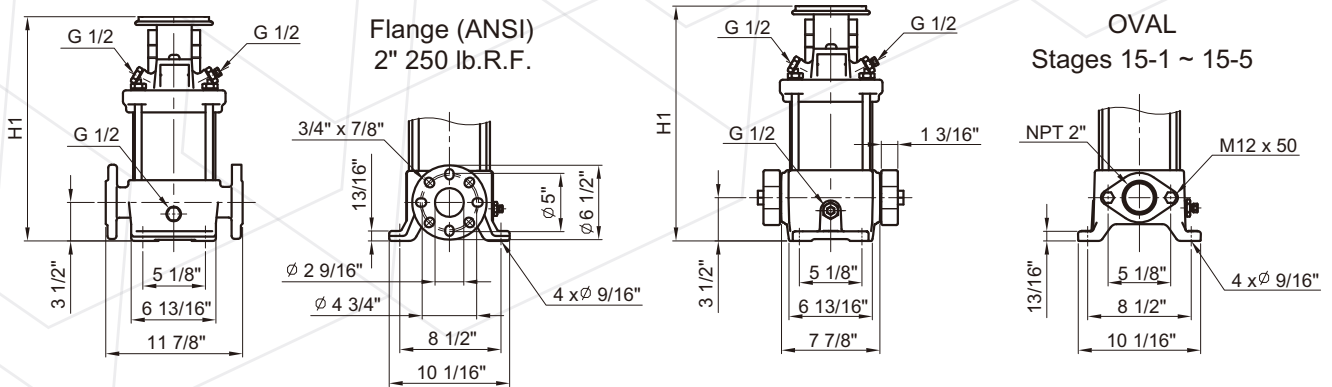
ECT-SB, ECT-SBI, ECT-SBN

Technical Data



ECT PUMP

ECT-SB 15



Pump type	Recommend motor of HP			ECT-SB					
	P ₂			NEMA Frame TEFC motors	NEMA Frame ODP motors	Dimension[inch]		Weights[lbs]	
	[HP]	[kW]	[PH]			H1		ANSI flange	OVAL
					ANSI flange	OVAL	ANSI flange		
ECT-SB 15-1	2	1.5	1 / 3	56C	-	16.24	16.24	78	66
ECT-SB 15-2	5	3.7	1 / 3	182TC	-	18.37	18.37	92	80
ECT-SB 15-3	5	3.7	1 / 3	182TC	-	18.36	18.36	95	83
ECT-SB 15-4	7 1/2	5.5	1 / 3	213TC	-	21.3	21.3	105	94
ECT-SB 15-5	10	7.5	1 / 3	213TC	-	23.07	23.07	109	97
ECT-SB 15-6	10	7.5	1 / 3	213TC	-	24.14	-	112	-
ECT-SB 15-7	15	11	3	254TC	254TC	29.24	-	124	-
ECT-SB 15-8	15	11	3	254TC	254TC	31.01	-	127	-
ECT-SB 15-9	15	11	3	254TC	254TC	32.78	-	130	-
ECT-SB 15-10	20	15	3	254TC	254TC	34.55	-	133	-
ECT-SB 15-12	25	18.5	3	284TSC	284TSC	37.4	-	141	-

* For the 5HP single phase TEFC motor, we provide 213TC Frame

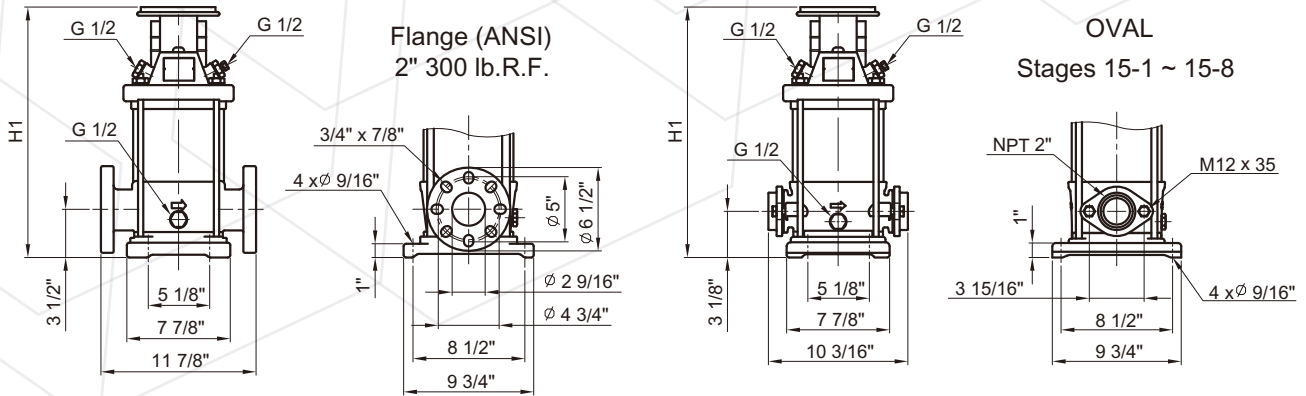
ECT-SB , ECT-SBI , ECT-SBN

Technical Data



ECT PUMP

ECT-SBI 15



Pump type	Recommend motor of HP			ECT-SBI					
	P ₂			NEMA Frame TEFC motors	NEMA Frame ODP motors	Dimension[inch]		Weights[lbs]	
	[HP]	[KW]	[PH]			H1		ANSI flange	OVAL
					ANSI flange	OVAL	ANSI flange		
ECT-SBI 15-1	2	1.5	1 / 3	56C	-	16.1	15.71	61	59
ECT-SBI 15-2	5	3.7	1 / 3	182TC	-	17.13	16.73	84	80
ECT-SBI 15-3	5	3.7	1 / 3	182TC	-	18.3	17.9	87	83
ECT-SBI 15-4	7 1/2	5.5	1 / 3	213TC	-	21.22	20.82	97	93
ECT-SBI 15-5	10	7.5	1 / 3	213TC	-	22.99	22.59	100	96
ECT-SBI 15-6	10	7.5	1 / 3	213TC	-	24.07	23.67	103	100
ECT-SBI 15-7	15	11	3	254TC	254TC	29.16	28.76	116	112
ECT-SBI 15-8	15	11	3	254TC	254TC	30.93	30.54	119	116
ECT-SBI 15-9	15	11	3	254TC	254TC	32.7	-	123	-
ECT-SBI 15-10	20	15	3	254TC	254TC	34.47	-	126	-
ECT-SBI 15-12	25	18.5	3	284TSC	284TSC	37.26	-	126	-

* For the 5HP single phase TEFC motor, we provide 213TC Frame

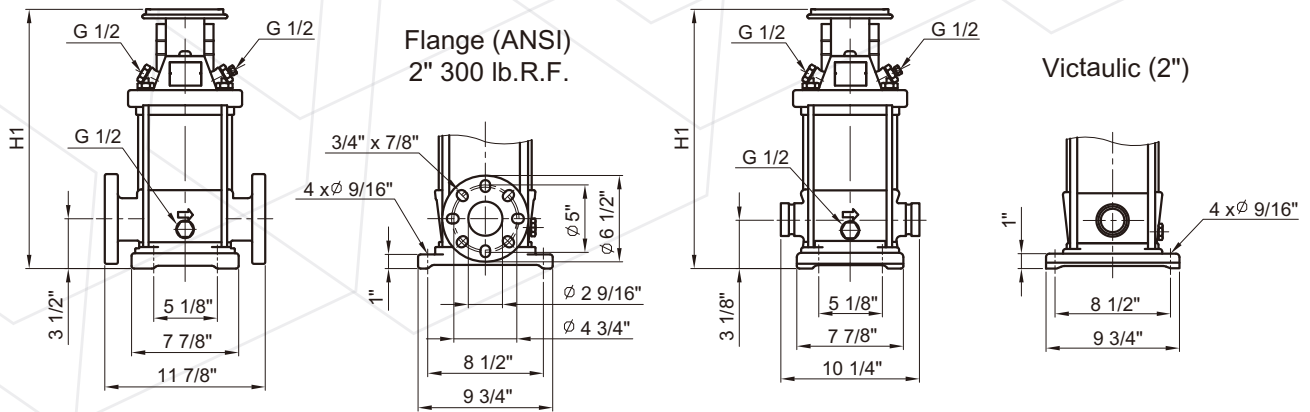
ECT-SB , ECT-SBI , ECT-SBN

Technical Data



ECT PUMP

ECT-SBN 15



Pump type	Recommend motor of HP			ECT-SBN					
	P ₂			NEMA Frame TEFC motors	NEMA Frame ODP motors	Dimension[inch]		Weights[lbs]	
	[HP]	[kW]	[PH]			H1		ANSI flange	Victaulic
ECT-SBN 15-1	2	1.5	1 / 3	56C	-	16.1	15.71	61	60
ECT-SBN 15-2	5	3.7	1 / 3	182TC	-	17.13	16.73	84	83
ECT-SBN 15-3	5	3.7	1 / 3	182TC	-	18.3	17.9	87	86
ECT-SBN 15-4	7 1/2	5.5	1 / 3	213TC	-	21.22	20.82	97	96
ECT-SBN 15-5	10	7.5	1 / 3	213TC	-	22.99	22.59	100	99
ECT-SBN 15-6	10	7.5	1 / 3	213TC	-	24.07	23.67	103	102
ECT-SBN 15-7	15	11	3	254TC	254TC	29.16	28.76	116	115
ECT-SBN 15-8	15	11	3	254TC	254TC	30.93	30.54	119	118
ECT-SBN 15-9	15	11	3	254TC	254TC	32.7	32.31	123	121
ECT-SBN 15-10	20	15	3	254TC	254TC	34.47	34.08	126	124
ECT-SBN 15-12	25	18.5	3	284TSC	284TSC	37.26	36.87	126	125

* For the 5HP single phase TEFC motor, we provide 213TC Frame

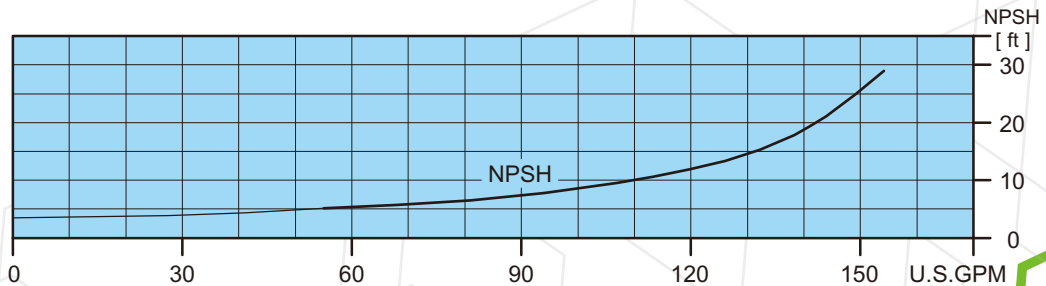
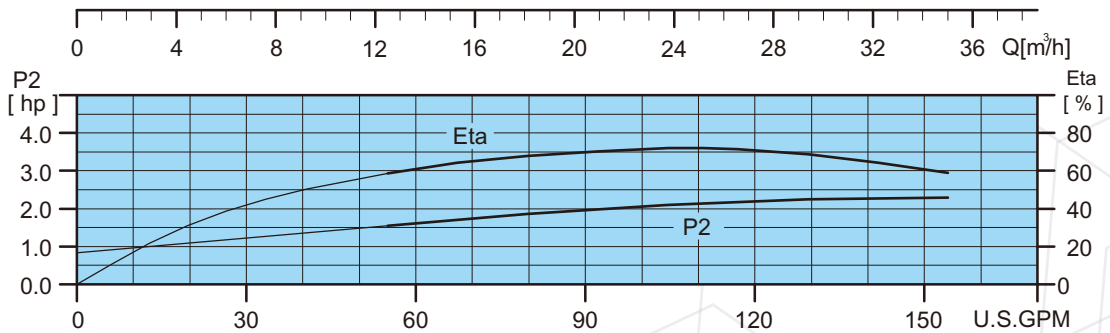
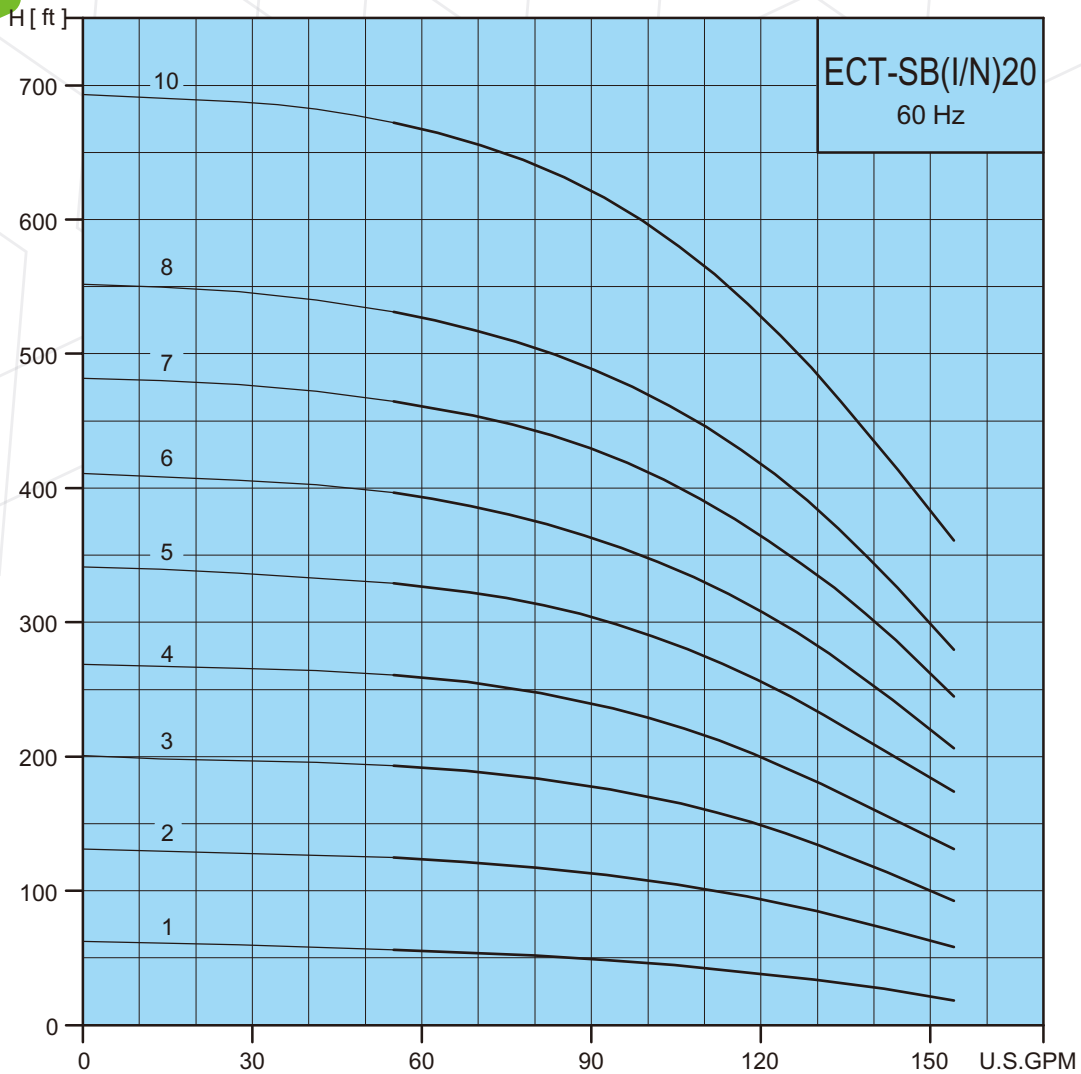
ECT-SB, ECT-SBI, ECT-SBN

Performance Curves



ECT PUMP

ECT-SB, ECT-SBI, ECT-SBN 20



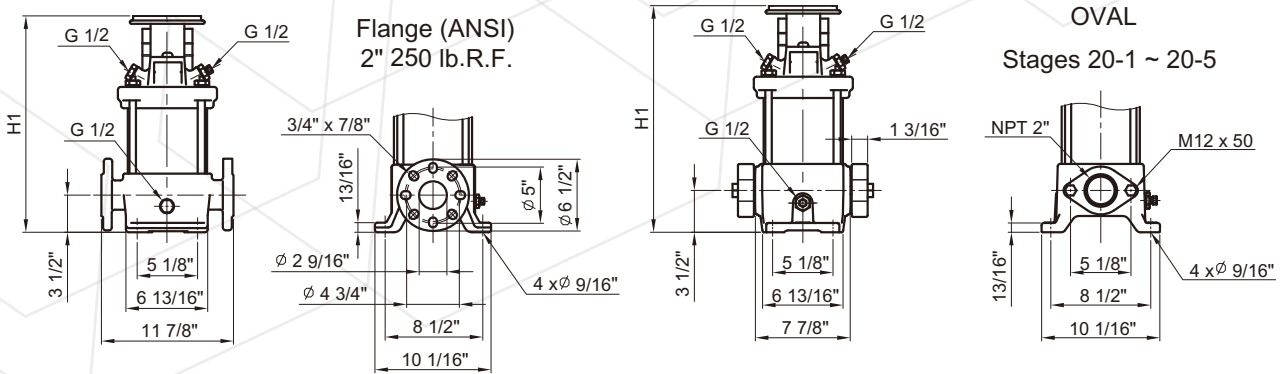
ECT-SB, ECT-SBI, ECT-SBN

Technical Data



ECT PUMP

ECT-SB 20



Pump type	Recommend motor of HP			ECT-SB					
	P ₂			NEMA Frame TEFC motors	NEMA Frame ODP motors	Dimension[inch]		Weights[lbs]	
	[HP]	[kW]	[PH]			H1		ANSI flange	OVAL
ECT-SB 20-1	3	2.2	1 / 3	182TC	-	17.19	17.19	92	80
ECT-SB 20-2	5	3.7	1 / 3	182TC	-	17.19	17.19	92	80
ECT-SB 20-3	7 1/2	5.5	1 / 3	213TC	-	19.52	19.52	102	91
ECT-SB 20-4	10	7.5	1 / 3	213TC	-	21.3	21.3	105	94
ECT-SB 20-5	15	11	3	254TC	254TC	25.69	25.69	118	106
ECT-SB 20-6	15	11	3	254TC	254TC	27.46	27.46	121	109
ECT-SB 20-7	20	15	3	254TC	254TC	29.24	29.24	124	112
ECT-SB 20-8	20	15	3	254TC	254TC	31.01	-	127	-
ECT-SB 20-10	25	18.5	3	284TSC	284TSC	33.86	-	135	-

* For the 5HP single phase TEFC motor, we provide 213TC Frame

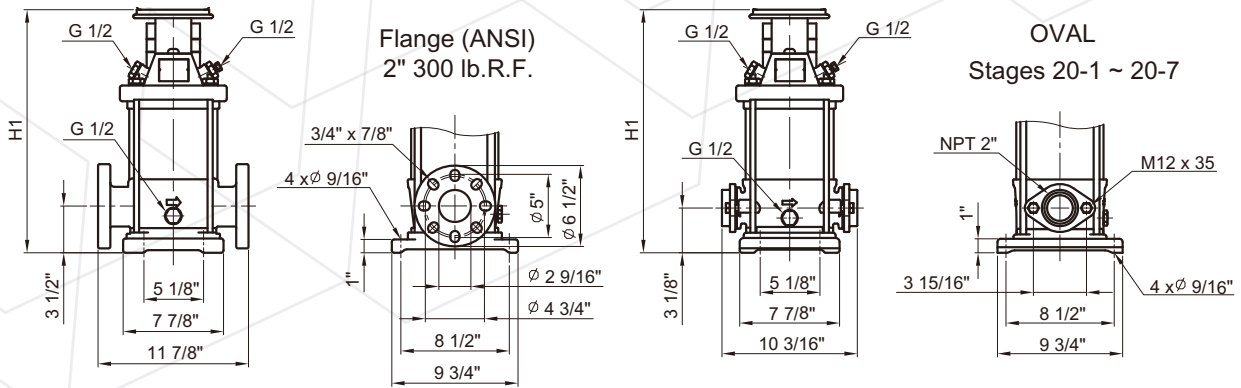
ECT-SB , ECT-SBI , ECT-SBN

Technical Data



ECT PUMP

ECT-SBI 20



Pump type	Recommend motor of HP			ECT-SBI					
	P ₂			NEMA Frame TEFC motors	NEMA Frame ODP motors	Dimension[inch]		Weights[lbs]	
	[HP]	[kW]	[PH]			H1		ANSI flange	OVAL
ECT-SBI 20-1	3	2.2	1 / 3	182TC	-	17.19	16.79	83	80
ECT-SBI 20-2	5	3.7	1 / 3	182TC	-	17.2	16.81	84	80
ECT-SBI 20-3	7 1/2	5.5	1 / 3	213TC	-	19.52	19.13	94	90
ECT-SBI 20-4	10	7.5	1 / 3	213TC	-	21.3	20.9	97	93
ECT-SBI 20-5	15	11	3	254TC	254TC	25.69	25.3	110	106
ECT-SBI 20-6	15	11	3	254TC	254TC	27.46	27.07	113	109
ECT-SBI 20-7	20	15	3	254TC	254TC	29.24	28.84	116	113
ECT-SBI 20-8	20	15	3	254TC	254TC	31.01	-	119	-
ECT-SBI 20-10	25	18.5	3	284TSC	284TSC	33.8	-	120	-

* For the 5HP single phase TEFC motor, we provide 213TC Frame

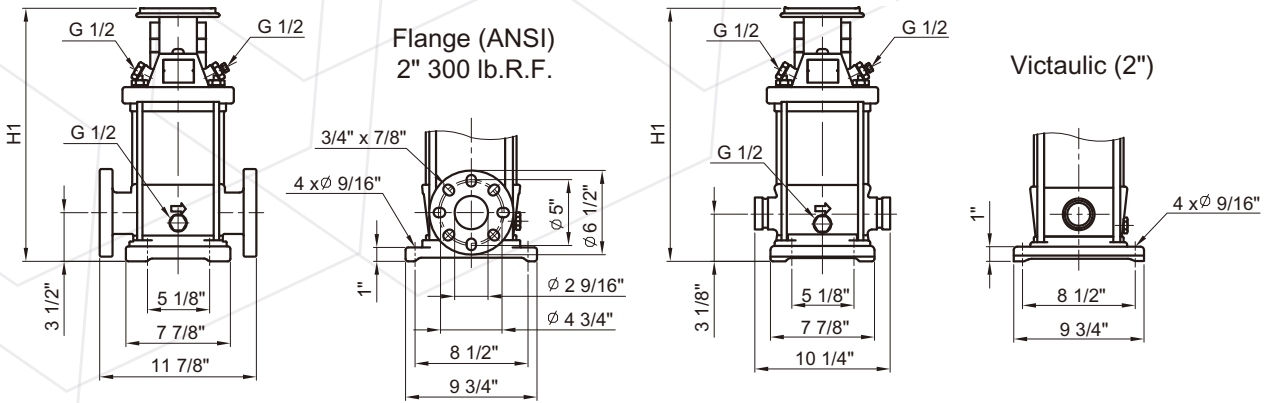
ECT-SB , ECT-SBI , ECT-SBN

Technical Data



ECT PUMP

ECT-SBN 20



Pump type	Recommend motor of HP			ECT-SBN					
	P ₂			NEMA Frame TEFC motors	NEMA Frame ODP motors	Dimension[inch]		Weights[lbs]	
	[HP]	[kW]	[PH]			H1		ANSI flange	Victaulic
ECT-SBN 20-1	3	2.2	1 / 3	182TC	-	17.19	16.79	83	86
ECT-SBN 20-2	5	3.7	1 / 3	182TC	-	17.2	16.81	84	83
ECT-SBN 20-3	7 1/2	5.5	1 / 3	213TC	-	19.52	19.13	94	93
ECT-SBN 20-4	10	7.5	1 / 3	213TC	-	21.3	20.9	97	96
ECT-SBN 20-5	15	11	3	254TC	254TC	25.69	25.3	110	109
ECT-SBN 20-6	15	11	3	254TC	254TC	27.46	27.07	113	112
ECT-SBN 20-7	20	15	3	254TC	254TC	29.24	28.84	116	115
ECT-SBN 20-8	20	15	3	254TC	254TC	31.01	30.61	119	118
ECT-SBN 20-10	25	18.5	3	284TSC	284TSC	33.8	33.41	120	119

* For the 5HP single phase TEFC motor, we provide 213TC Frame

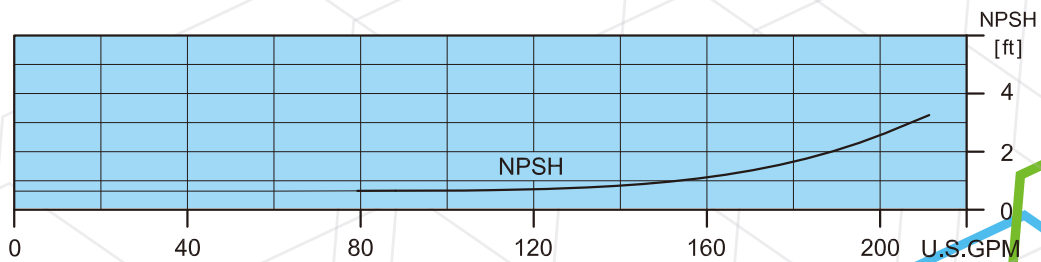
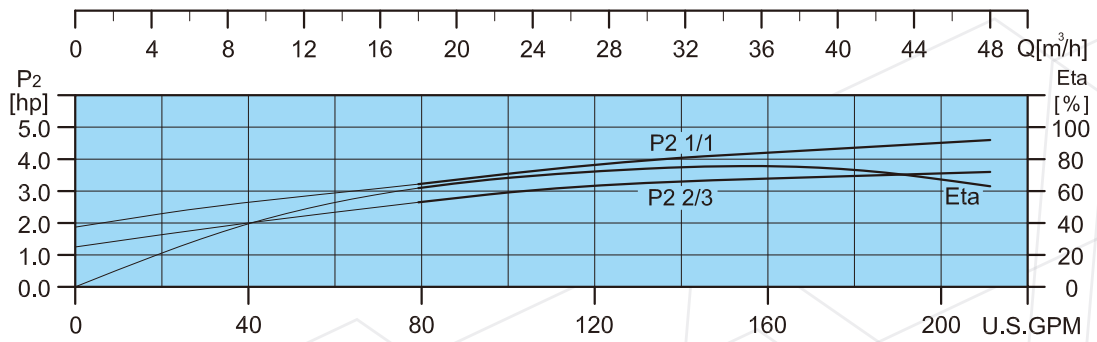
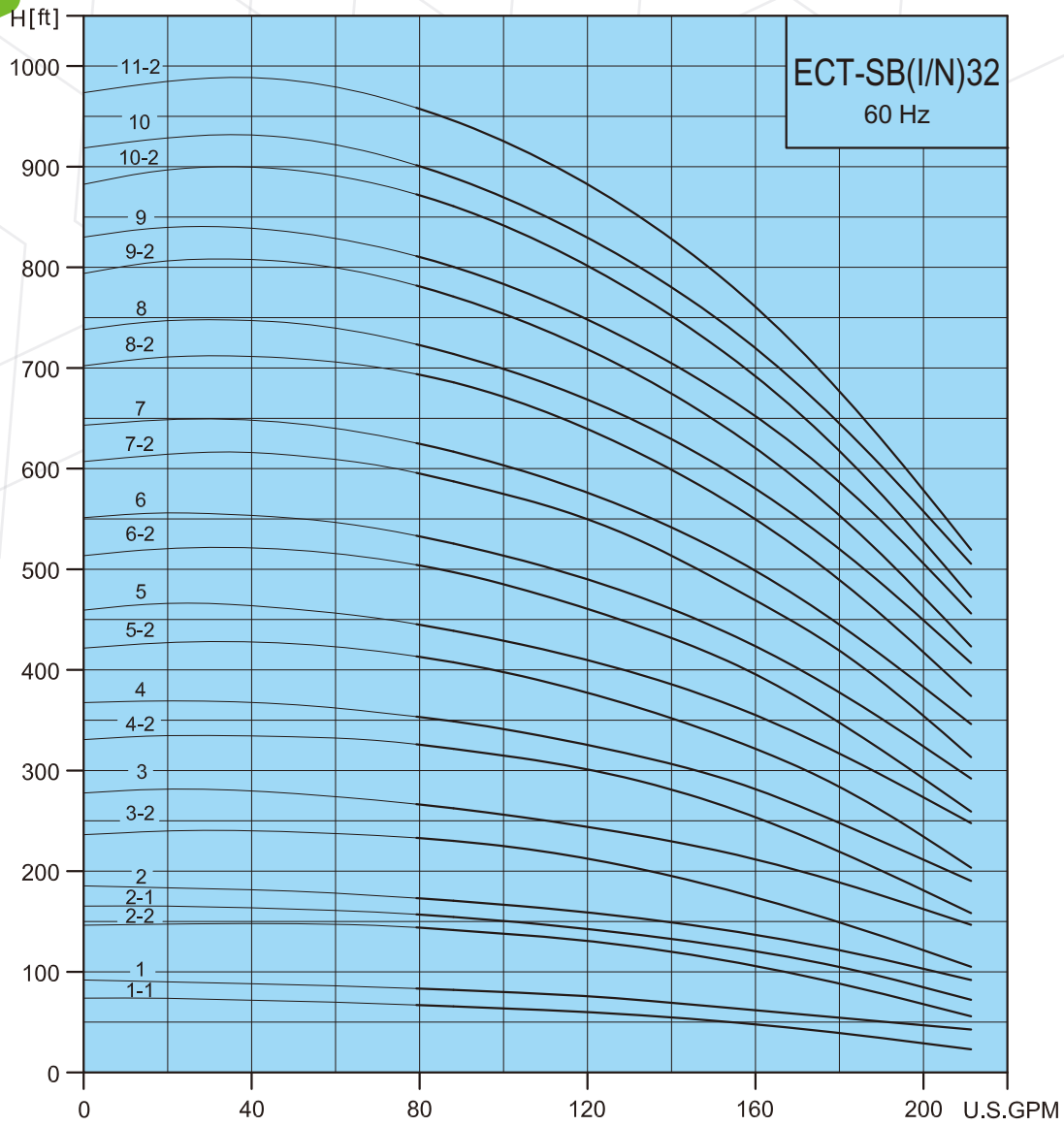
ECT-SB, ECT-SBI, ECT-SBN

Performance Curves



ECT PUMP

ECT-SB, ECT-SBI, ECT-SBN 32



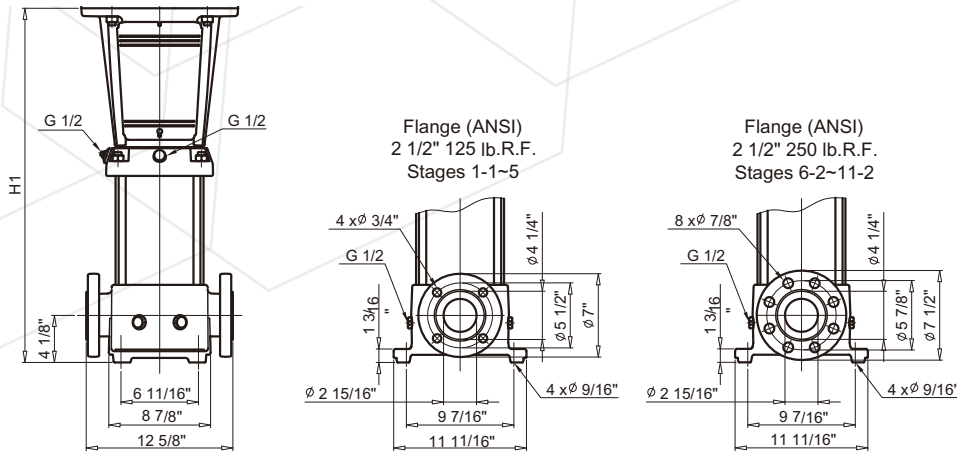
ECT-SB, ECT-SBI, ECT-SBN

Technical Data



ECT PUMP

ECT-SB 32



Pump type	Recommend motor of HP			ECT-SB			
	P ₂			NEMA Frame TEFC motors	NEMA Frame ODP motors	Dimension [inch]	Weights[lbs]
	[HP]	[kW]	[PH]			ANSI flange	ANSI flange
ECT-SB 32-1-1	3	2.2	1 / 3	182TC	-	20.02	120.66
ECT-SB 32-1	5	3.7	1 / 3	182TC	-	20.02	120.75
ECT-SB 32-2-2	7 1/2	5.5	1 / 3	213TC	-	22.78	127.18
ECT-SB 32-2-1	7 1/2	5.5	1 / 3	213TC	-	22.78	127.40
ECT-SB 32-2	7 1/2	5.5	1 / 3	213TC	-	22.78	127.40
ECT-SB 32-3-2	10	7.5	1 / 3	213TC	-	25.53	133.83
ECT-SB 32-3	15	11	3	254TC	254TC	29.67	155.18
ECT-SB 32-4-2	15	11	3	254TC	254TC	32.42	161.78
ECT-SB 32-4	15	11	3	254TC	254TC	32.42	161.78
ECT-SB 32-5-2	20	15	3	254TC	254TC	35.18	168.39
ECT-SB 32-5	20	15	3	254TC	254TC	35.18	168.39
ECT-SB 32-6-2	25	18.5	3	284TSC	284TSC	37.93	177.17
ECT-SB 32-6	25	18.5	3	284TSC	284TSC	37.93	177.17
ECT-SB 32-7-2	30	22	3	286TSC	284TSC	40.69	183.87
ECT-SB 32-7	30	22	3	286TSC	284TSC	40.69	183.87
ECT-SB 32-8-2	30	22	3	286TSC	284TSC	43.44	190.83
ECT-SB 32-8	40	30	3	286TSC	286TSC	43.44	190.83
ECT-SB 32-9-2	40	30	3	286TSC	286TSC	46.20	196.77
ECT-SB 32-9	40	30	3	286TSC	286TSC	46.20	196.77
ECT-SB 32-10-2	40	30	3	286TSC	286TSC	48.96	202.50
ECT-SB 32-10	40	30	3	286TSC	286TSC	48.96	202.50
ECT-SB 32-11-2	40	30	3	286TSC	286TSC	51.71	208.45

* For the 5HP single phase TEFC motor, we provide 213TC Frame

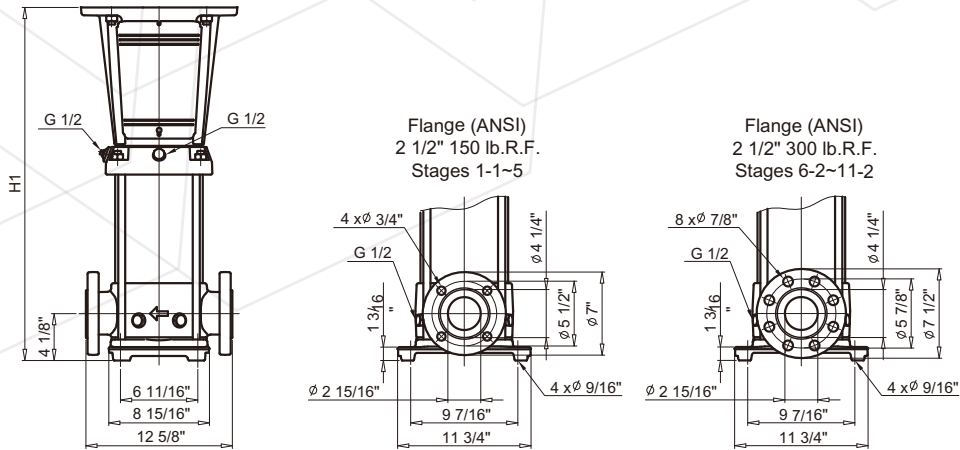
ECT-SB , ECT-SBI , ECT-SBN

Technical Data



ECT PUMP

ECT-SBI / ECT-SBN 32



Pump type	Recommend motor of HP			ECT-SBI, ECT-SBN			
	P ₂			NEMA Frame TEFC motors	NEMA Frame ODP motors	Dimension [inch]	Weights[lbs]
	[HP]	[kW]	[PH]			ANSI flange	ANSI flange
ECT-SBI / N 32-1-1	3.0	2.2	1 / 3	182TC	-	20.02	109.96
ECT-SBI / N 32-1	5.0	3.7	1 / 3	182TC	-	20.02	109.96
ECT-SBI / N 32-2-2	7 1/2	5.5	1 / 3	213TC	-	22.78	116.61
ECT-SBI / N 32-2-1	7 1/2	5.5	1 / 3	213TC	-	22.78	116.61
ECT-SBI / N 32-2	7 1/2	5.5	1 / 3	213TC	-	22.78	116.61
ECT-SBI / N 32-3-2	10.0	7.5	1 / 3	213TC	-	25.53	123.26
ECT-SBI / N 32-3	15.0	11	3	254TC	254TC	29.67	144.38
ECT-SBI / N 32-4-2	15.0	11	3	254TC	254TC	32.42	150.99
ECT-SBI / N 32-4	15.0	11	3	254TC	254TC	32.42	150.99
ECT-SBI / N 32-5-2	20.0	15	3	254TC	254TC	35.18	157.60
ECT-SBI / N 32-5	20.0	15	3	254TC	254TC	35.18	157.82
ECT-SBI / N 32-6-2	25.0	18.5	3	284TSC	284TSC	37.93	166.38
ECT-SBI / N 32-6	25.0	18.5	3	284TSC	284TSC	37.93	166.60
ECT-SBI / N 32-7-2	30.0	22	3	286TSC	284TSC	40.69	173.07
ECT-SBI / N 32-7	30.0	22	3	286TSC	284TSC	40.69	173.29
ECT-SBI / N 32-8-2	30.0	22	3	286TSC	284TSC	43.44	180.25
ECT-SBI / N 32-8	40.0	30	3	286TSC	286TSC	43.44	180.25
ECT-SBI / N 32-9-2	40.0	30	3	286TSC	286TSC	46.20	185.98
ECT-SBI / N 32-9	40.0	30	3	286TSC	286TSC	46.20	186.20
ECT-SBI / N 32-10-2	40.0	30	3	286TSC	286TSC	48.96	191.71
ECT-SBI / N 32-10	40.0	30	3	286TSC	286TSC	48.96	191.71
ECT-SBI / N 32-11-2	40.0	30	3	286TSC	286TSC	51.71	197.65

* For the 5HP single phase TEFC motor, we provide 213TC Frame

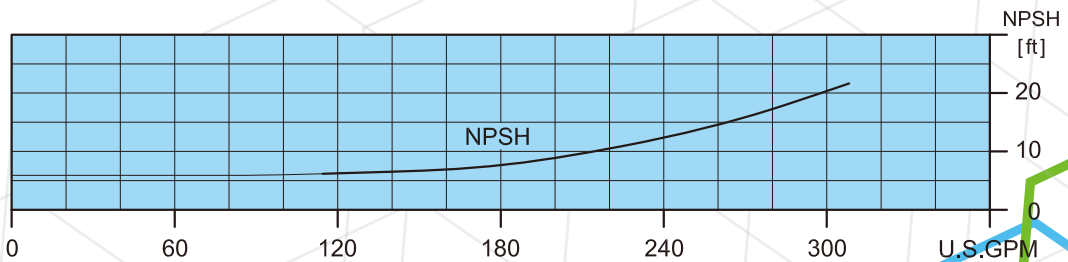
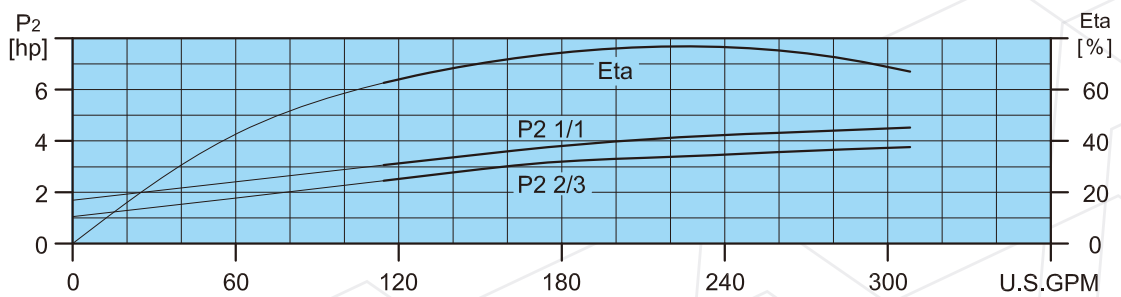
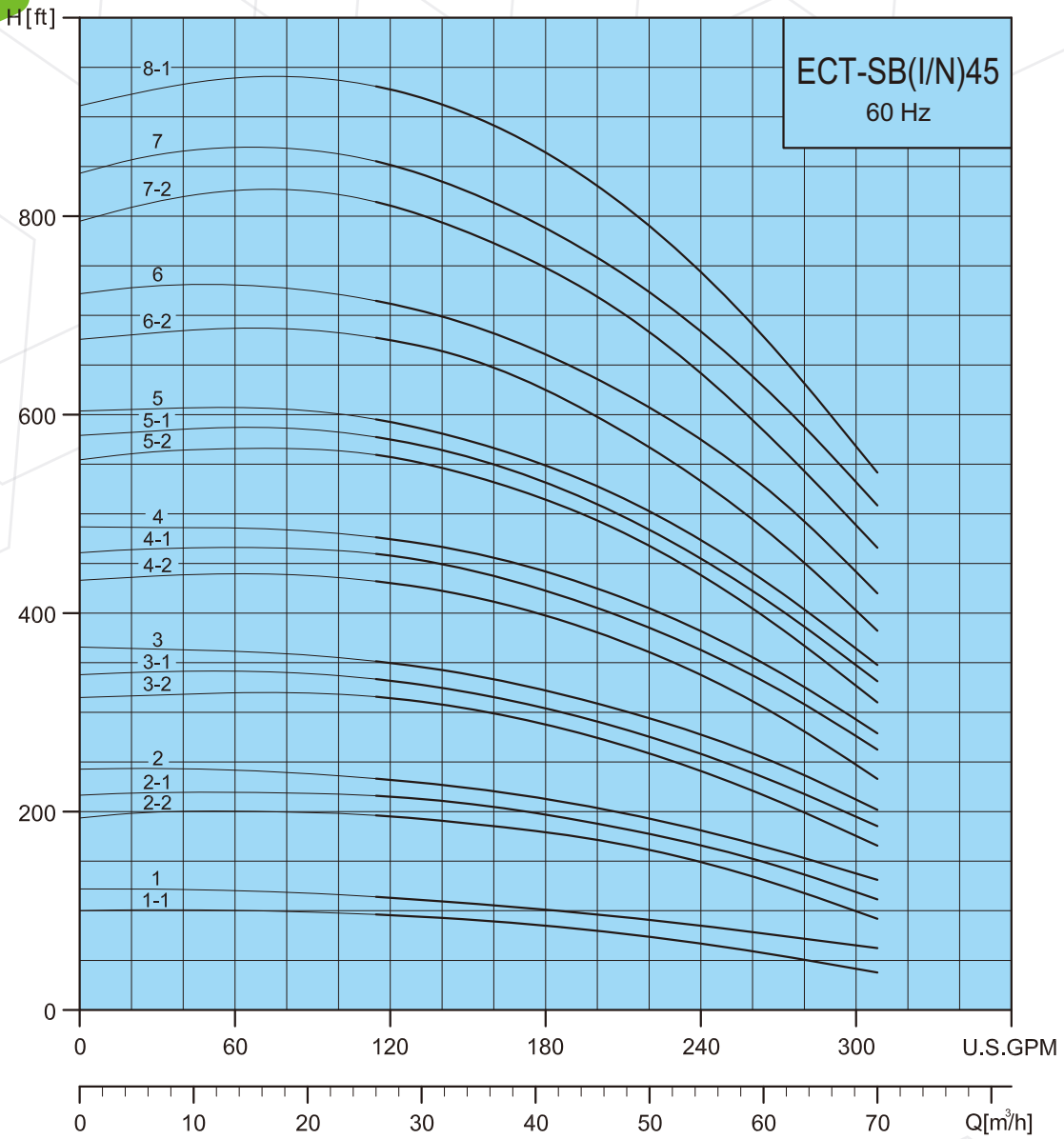
ECT-SB, ECT-SBI, ECT-SBN

Performance Curves



ECT PUMP

ECT-SB, ECT-SBI, ECT-SBN 45



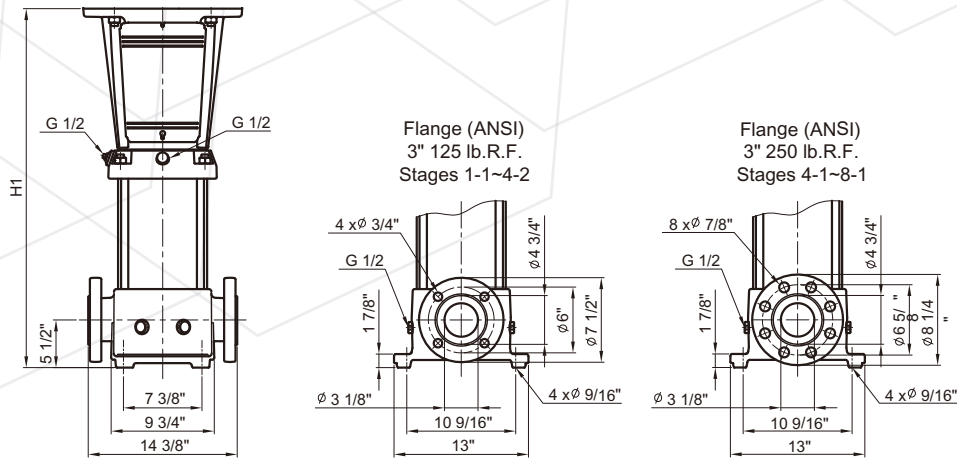
ECT-SB, ECT-SBI, ECT-SBN

Technical Data



ECT PUMP

ECT-SB 45



Pump type	Recommend motor of HP			ECT-SB			
	P ₂			NEMA Frame TEFC motors	NEMA Frame ODP motors	Dimension [inch]	Weights[lbs]
	[HP]	[kW]	[PH]			ANSI flange	ANSI flange
						H1	
ECT-SB 45-1-1	7 1/2	5.5	1 / 3	213TC	-	22.26	143.41
ECT-SB 45-1	7 1/2	5.5	1 / 3	213TC	-	22.26	143.44
ECT-SB 45-2-2	15	11	3	254TC	254TC	29.55	172.60
ECT-SB 45-2-1	15	11	3	254TC	254TC	29.55	172.62
ECT-SB 45-2	15	11	3	254TC	254TC	29.55	172.64
ECT-SB 45-3-2	20	15	3	254TC	254TC	32.70	180.68
ECT-SB 45-3-1	25	18.5	3	284TSC	284TSC	32.70	182.87
ECT-SB 45-3	25	18.5	3	284TSC	284TSC	32.70	182.90
ECT-SB 45-4-2	30	22	3	286TSC	284TSC	35.85	190.94
ECT-SB 45-4-1	30	22	3	286TSC	284TSC	35.85	190.96
ECT-SB 45-4	30	22	3	286TSC	284TSC	35.85	190.98
ECT-SB 45-5-2	40	30	3	286TSC	286TSC	39.00	199.02
ECT-SB 45-5-1	40	30	3	286TSC	286TSC	39.00	199.04
ECT-SB 45-5	40	30	3	286TSC	286TSC	39.00	199.06
ECT-SB 45-6-2	50	37	3	326TSC	324TSC	42.15	224.55
ECT-SB 45-6	50	37	3	326TSC	324TSC	42.15	224.59
ECT-SB 45-7-2	50	37	3	326TSC	324TSC	45.30	232.63
ECT-SB 45-7	60	45	3	364TSC	324TSC	45.30	232.67
ECT-SB 45-8-1	60	45	3	364TSC	324TSC	48.44	239.79

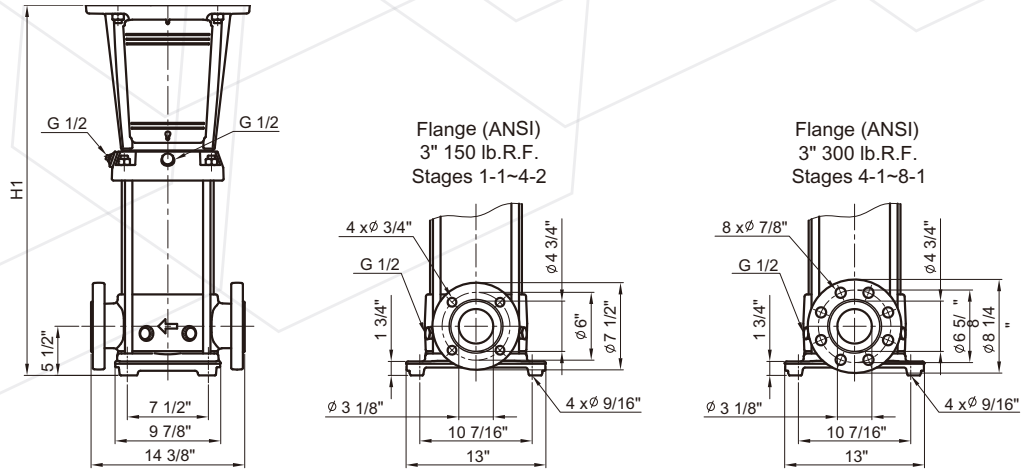
ECT-SB , ECT-SBI , ECT-SBN

Technical Data



ECT PUMP

ECT-SBI / ECT-SBN 45



Pump type	Recommended motor of HP			ECT-SBI, ECT-SBN			
	P ₂			NEMA Frame TEFC motors	NEMA Frame ODP motors	Dimension [inch]	Weights [lbs]
	[HP]	[kW]	[PH]			ANSI flange	ANSI flange
						H1	
ECT-SBI / N 45-1-1	7 1/2	5.5	1 / 3	213TC	-	22.20	124.60
ECT-SBI / N 45-1	7 1/2	5.5	1 / 3	213TC	-	22.20	124.63
ECT-SBI / N 45-2-2	15	11	3	254TC	254TC	29.49	153.79
ECT-SBI / N 45-2-1	15	11	3	254TC	254TC	29.49	153.81
ECT-SBI / N 45-2	15	11	3	254TC	254TC	29.49	153.83
ECT-SBI / N 45-3-2	20	15	3	254TC	254TC	32.64	161.87
ECT-SBI / N 45-3-1	25	18.5	3	284TSC	284TSC	32.64	164.06
ECT-SBI / N 45-3	25	18.5	3	284TSC	284TSC	32.64	164.09
ECT-SBI / N 45-4-2	30	22	3	286TSC	284TSC	35.79	172.13
ECT-SBI / N 45-4-1	30	22	3	286TSC	284TSC	35.79	172.15
ECT-SBI / N 45-4	30	22	3	286TSC	284TSC	35.79	172.17
ECT-SBI / N 45-5-2	40	30	3	286TSC	286TSC	38.94	180.21
ECT-SBI / N 45-5-1	40	30	3	286TSC	286TSC	38.94	180.23
ECT-SBI / N 45-5	40	30	3	286TSC	286TSC	38.94	180.25
ECT-SBI / N 45-6-2	50	37	3	326TSC	324TSC	42.09	205.74
ECT-SBI / N 45-6	50	37	3	326TSC	324TSC	42.09	205.78
ECT-SBI / N 45-7-2	50	37	3	326TSC	324TSC	45.24	213.82
ECT-SBI / N 45-7	60	45	3	364TSC	324TSC	45.24	213.86
ECT-SBI / N 45-8-1	60	45	3	364TSC	324TSC	48.39	220.98

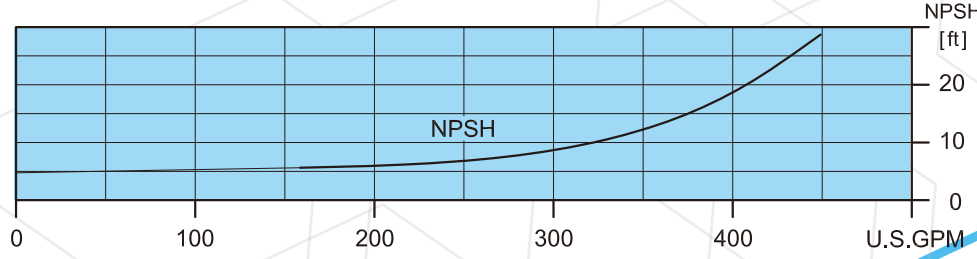
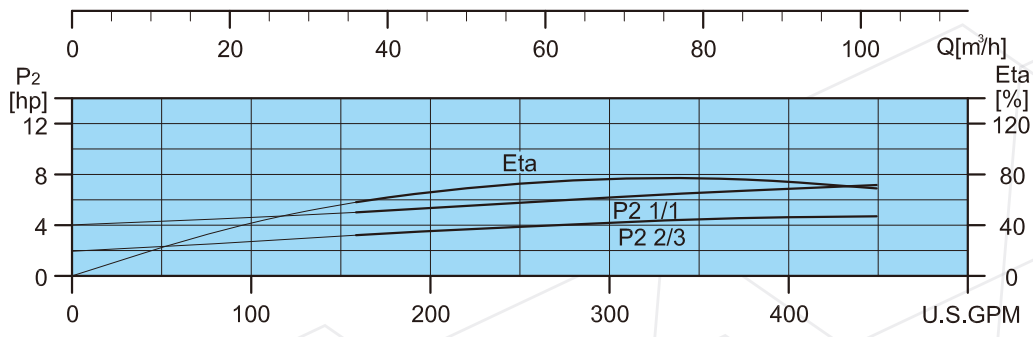
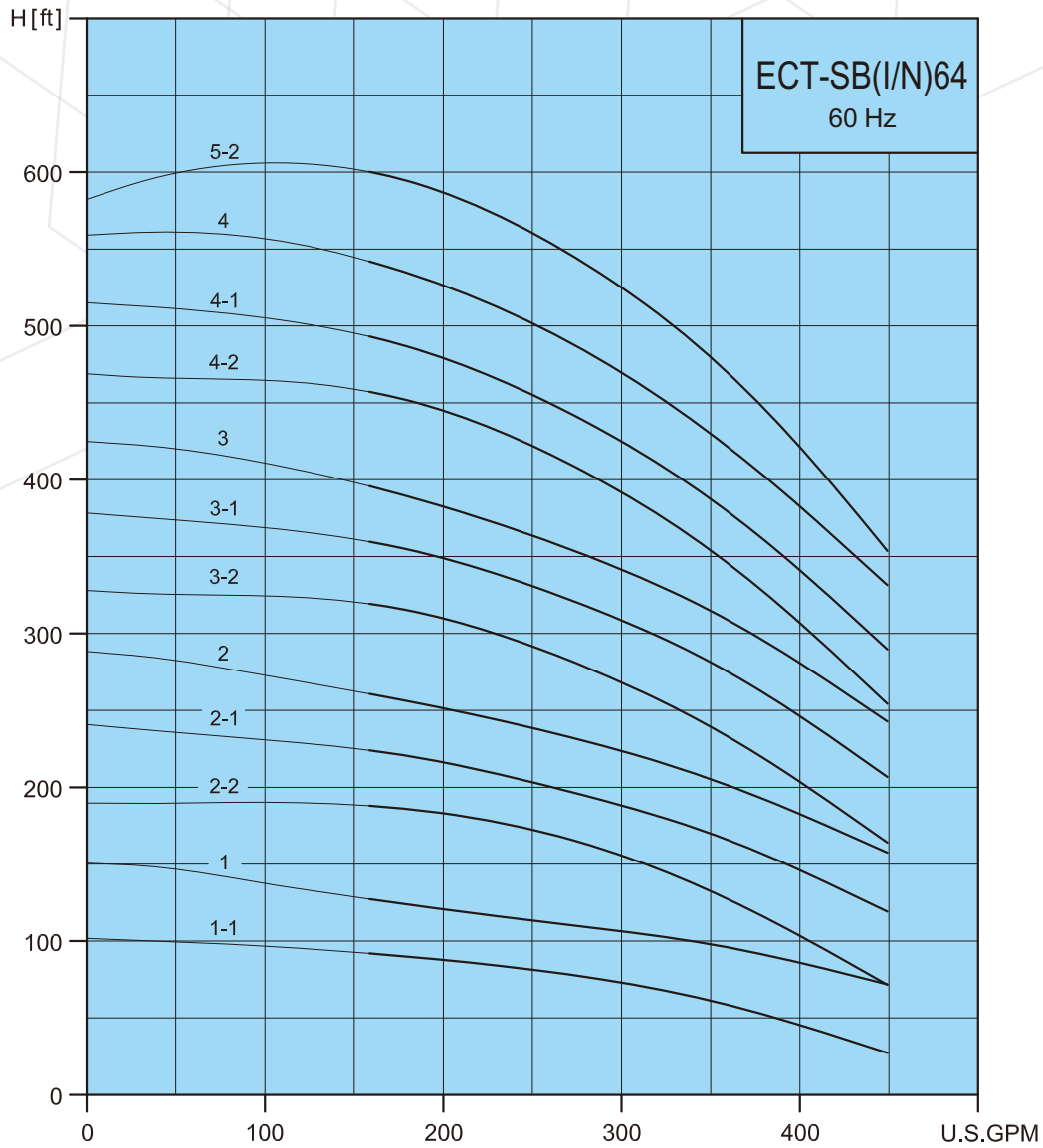
ECT-SB, ECT-SBI, ECT-SBN



Performance Curves

ECT PUMP

ECT-SB, ECT-SBI, ECT-SBN 64



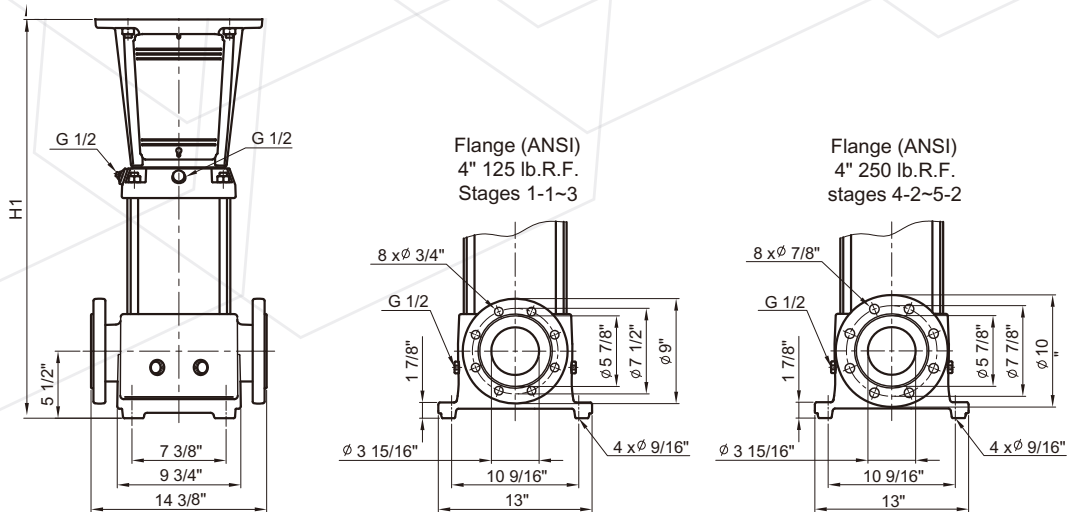
ECT-SB, ECT-SBI, ECT-SBN

Technical Data



ECT PUMP

ECT-SB 64



Pump type	Recommend motor of HP			ECT-SB			
	P ₂			NEMA Frame TEFC motors	NEMA Frame ODP motors	Dimension [inch]	Weights[lbs]
	[HP]	[kW]	[PH]			ANSI flange	ANSI flange
						H1	
ECT-SB 64-1-1	7 1/2	5.5	1 / 3	213TC	-	22.36	130.13
ECT-SB 64-1	15	11	3	254TC	254TC	26.50	151.26
ECT-SB 64-2-2	15	11	3	254TC	254TC	29.74	159.93
ECT-SB 64-2-1	20	15	3	254TC	254TC	29.74	159.93
ECT-SB 64-2	25	18.5	3	284TSC	284TSC	29.74	162.10
ECT-SB 64-3-2	30	22	3	286TSC	284TSC	32.99	171.93
ECT-SB 64-3-1	40	30	3	286TSC	286TSC	32.99	171.93
ECT-SB 64-3	40	30	3	286TSC	286TSC	32.99	171.93
ECT-SB 64-4-2	40	30	3	286TSC	286TSC	36.24	180.52
ECT-SB 64-4-1	50	37	3	326TSC	324TSC	36.24	197.96
ECT-SB 64-4	50	37	3	326TSC	324TSC	36.24	198.18
ECT-SB 64-5-2	60	45	3	364TSC	324TSC	39.49	206.57

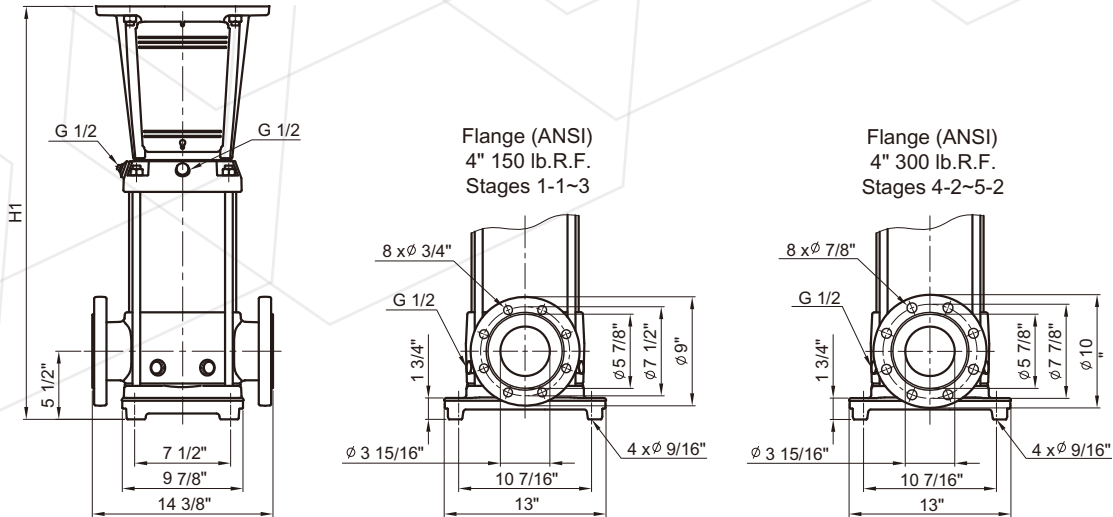
ECT-SB, ECT-SBI, ECT-SBN

Technical Data



ECT PUMP

ECT-SBI / ECT-SBN 64



Pump type	Recommend motor of HP			ECT-SBI, ECT-SBN			
	P ₂			NEMA Frame TEFC motors	NEMA Frame ODP motors	Dimension [inch]	Weights[lbs]
	[hp]	[kW]	[PH]			ANSI flange	ANSI flange
ECT-SBI / N 64-1-1	7 1/2	5.5	1 / 3	213TC	-	H1 22.36	115.11
ECT-SBI / N 64-1	15	11	3	254TC	254TC	26.50	136.23
ECT-SBI / N 64-2-2	15	11	3	254TC	254TC	29.74	144.89
ECT-SBI / N 64-2-1	20	15	3	254TC	254TC	29.74	144.89
ECT-SBI / N 64-2	25	18.5	3	284TSC	284TSC	29.74	147.06
ECT-SBI / N 64-3-2	30	22	3	286TSC	284TSC	32.99	155.89
ECT-SBI / N 64-3-1	40	30	3	286TSC	286TSC	32.99	155.89
ECT-SBI / N 64-3	40	30	3	286TSC	286TSC	32.99	155.89
ECT-SBI / N 64-4-2	40	30	3	286TSC	286TSC	36.24	164.42
ECT-SBI / N 64-4-1	50	37	3	326TSC	324TSC	36.24	181.86
ECT-SBI / N 64-4	50	37	3	326TSC	324TSC	36.24	181.86
ECT-SBI / N 64-5-2	60	45	3	364TSC	324TSC	39.49	181.59

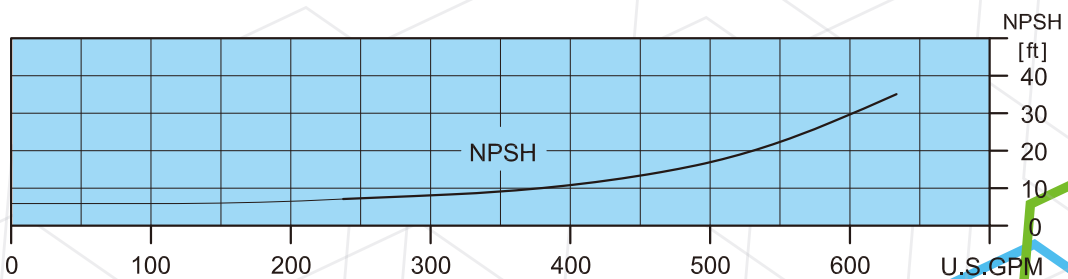
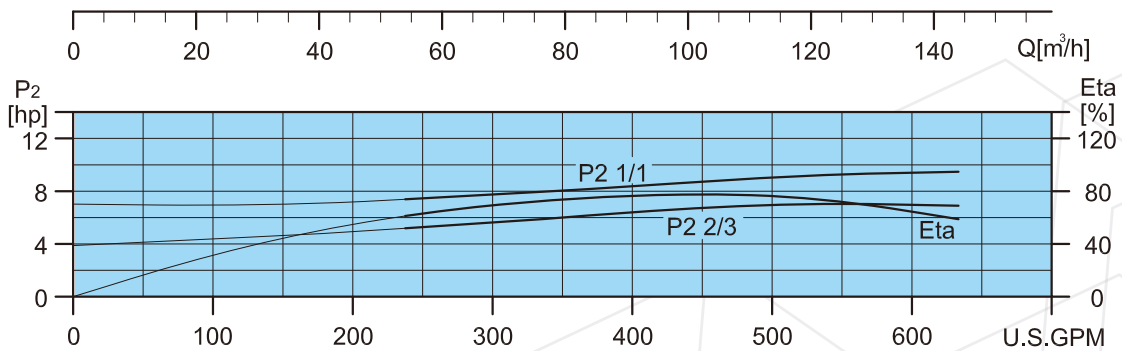
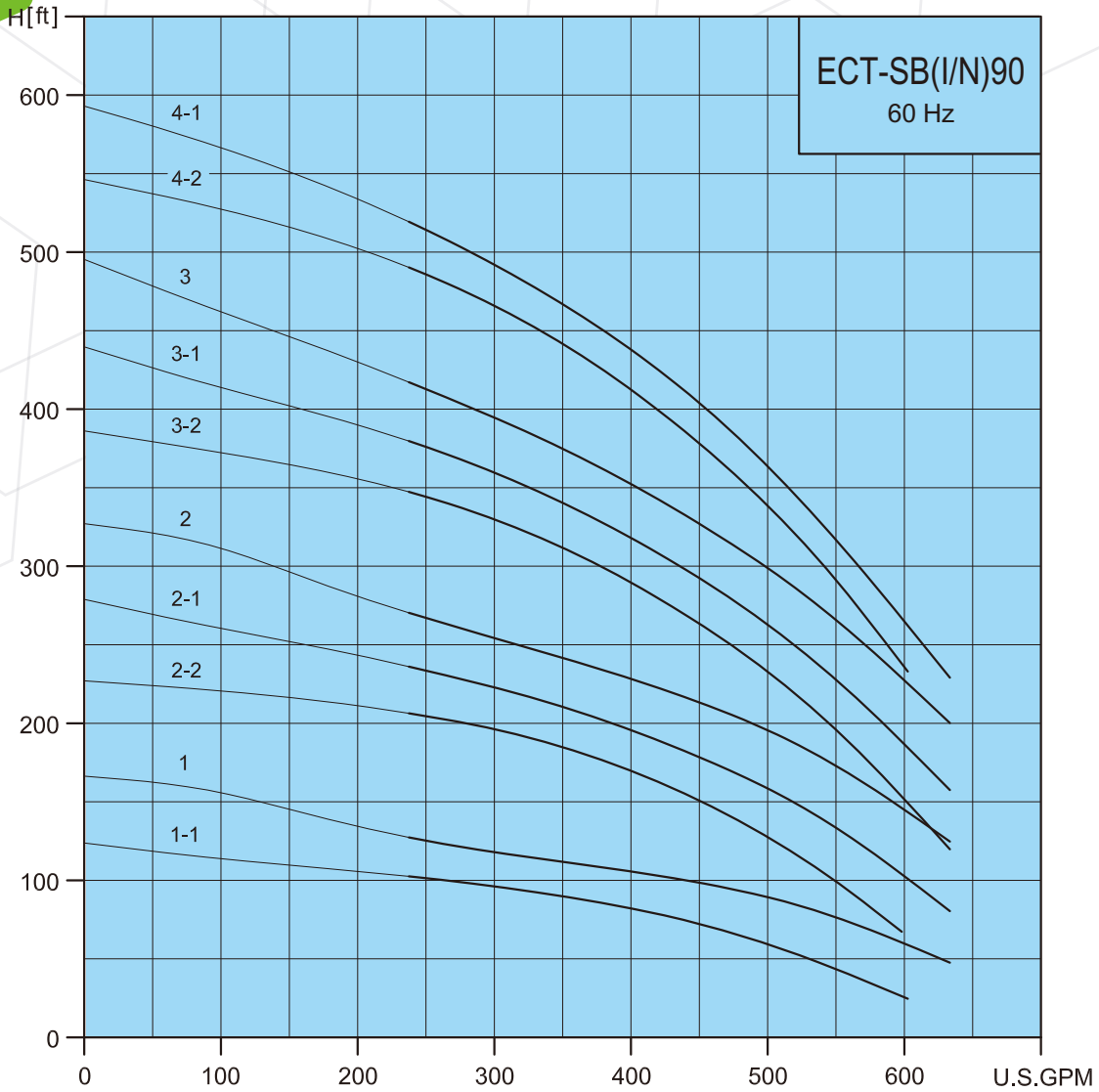
ECT-SB, ECT-SBI, ECT-SBN

Performance Curves



ECT PUMP

ECT-SB, ECT-SBI, ECT-SBN 90



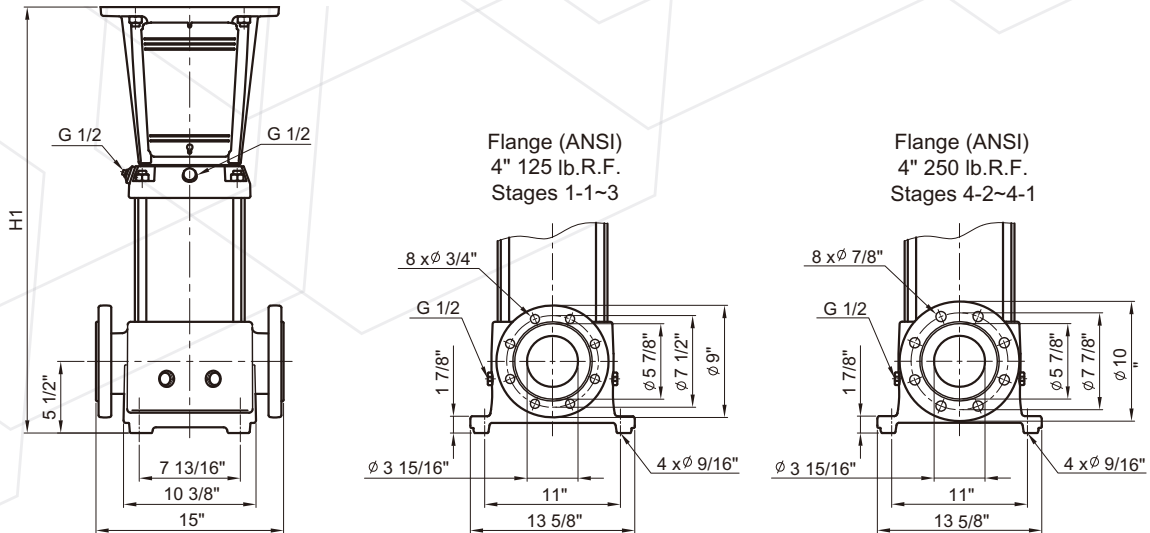
ECT-SB, ECT-SBI, ECT-SBN

Technical Data



ECT PUMP

ECT-SB 90



Pump type	Recommend motor of HP			ECT-SB			
	P ₂			NEMA Frame TEFC motors	NEMA Frame ODP motors	Dimension [inch]	Weights[lbs]
	[HP]	[kW]	[PH]			ANSI flange H1	ANSI flange
ECT-SB 90-1-1	15	11	3	254TC	254TC	26.60	180.81
ECT-SB 90-1	15	11	3	254TC	254TC	26.60	180.86
ECT-SB 90-2-2	25	18.5	3	284TSC	284TSC	30.19	194.39
ECT-SB 90-2-1	30	22	3	286TSC	284TSC	30.19	194.44
ECT-SB 90-2	40	30	3	286TSC	286TSC	30.19	194.48
ECT-SB 90-3-2	40	30	3	286TSC	286TSC	33.77	205.67
ECT-SB 90-3-1	50	37	3	326TSC	324TSC	33.77	223.16
ECT-SB 90-3	50	37	3	326TSC	324TSC	33.77	223.20
ECT-SB 90-4-2	60	45	3	364TSC	324TSC	37.21	238.49
ECT-SB 90-4-1	60	45	3	364TSC	324TSC	37.21	238.93

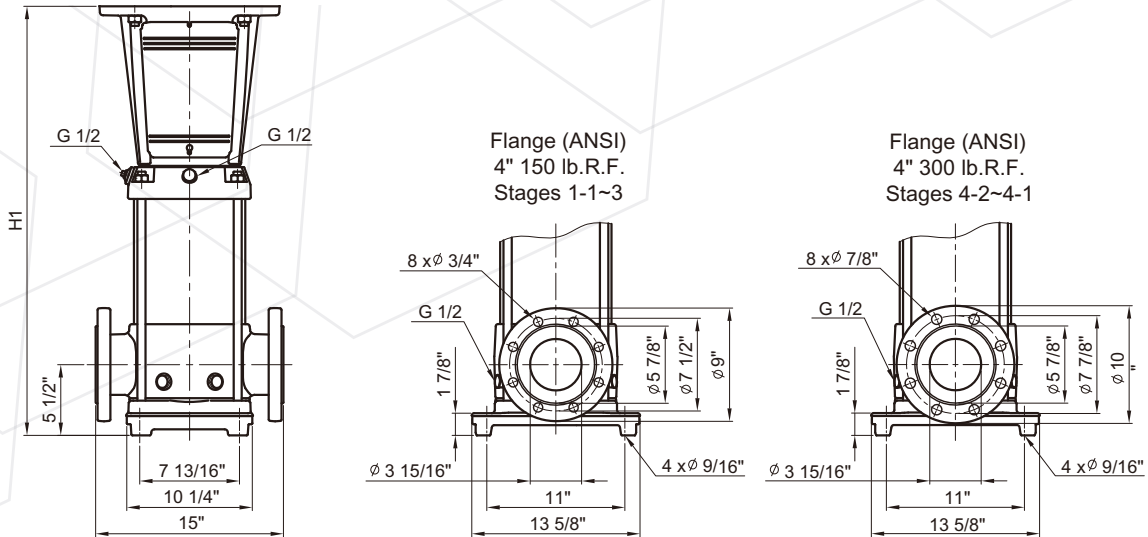
ECT-SB , ECT-SBI , ECT-SBN

Technical Data



ECT PUMP

ECT-SBI / ECT-SBN 90



Pump type	Recommend motor of HP			ECT-SBI, ECT-SBN			
	P ₂			NEMA Frame TEFC motors	NEMA Frame ODP motors	Dimension [inch]	Weights[lbs]
	[HP]	[kW]	[PH]			ANSI flange H1	ANSI flange
ECT-SBI / N 90-1-1	15	11	3	254TC	254TC	26.75	159.32
ECT-SBI / N 90-1	15	11	3	254TC	254TC	26.75	159.36
ECT-SBI / N 90-2-2	25	18.5	3	284TSC	284TSC	30.34	172.59
ECT-SBI / N 90-2-1	30	22	3	286TSC	284TSC	30.34	172.63
ECT-SBI / N 90-2	40	30	3	286TSC	286TSC	30.34	172.68
ECT-SBI / N 90-3-2	40	30	3	286TSC	286TSC	33.93	183.78
ECT-SBI / N 90-3-1	50	37	3	326TSC	324TSC	33.93	201.26
ECT-SBI / N 90-3	50	37	3	326TSC	324TSC	33.93	201.31
ECT-SBI / N 90-4-2	60	45	3	364TSC	324TSC	37.36	216.24
ECT-SBI / N 90-4-1	60	45	3	364TSC	324TSC	37.36	216.62

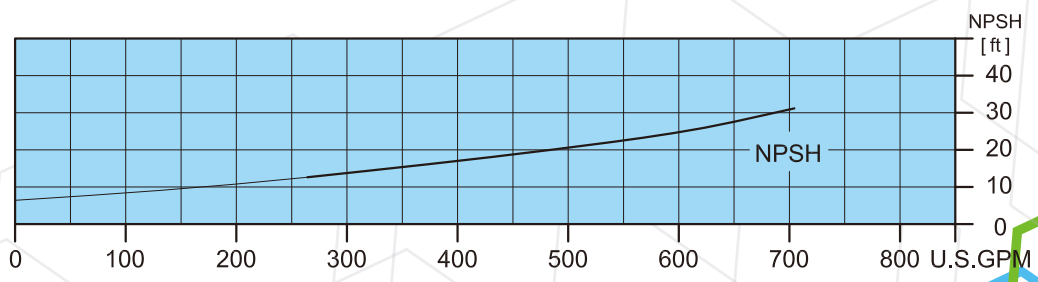
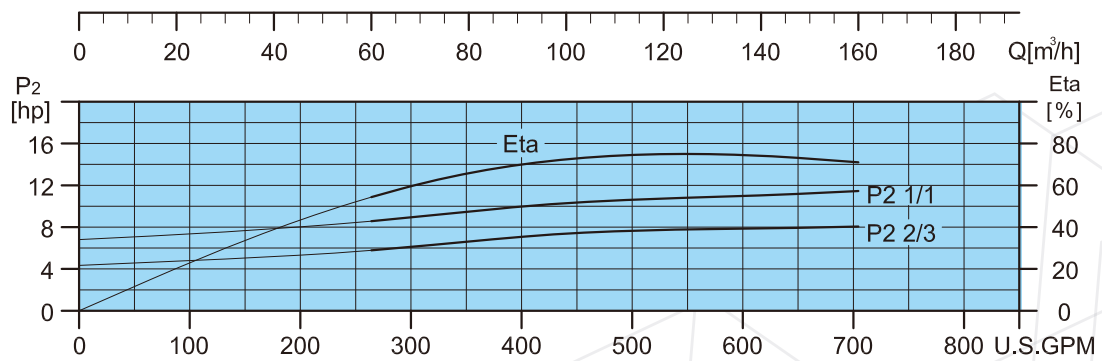
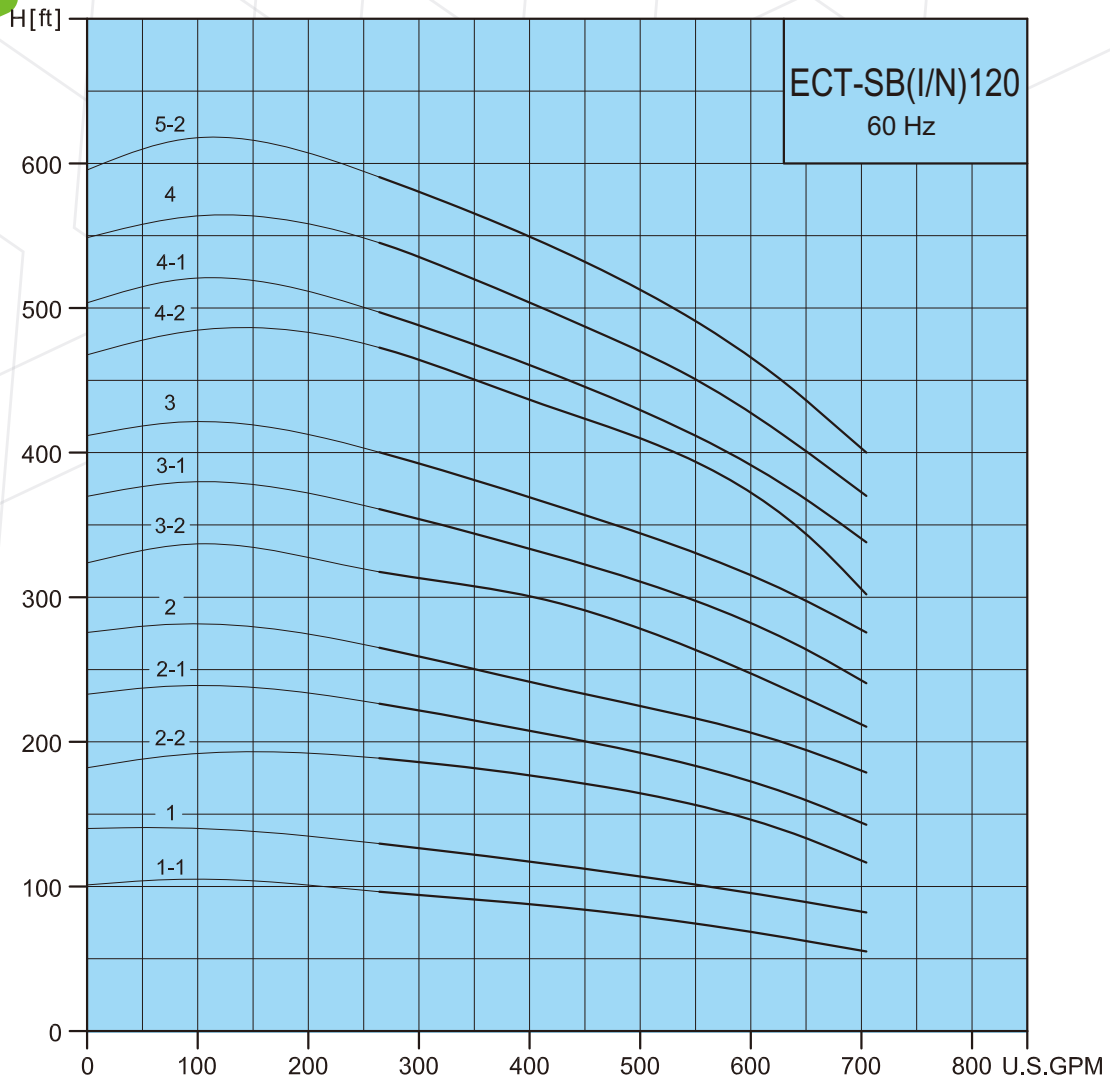
ECT-SB, ECT-SBI, ECT-SBN

Performance Curves



ECT PUMP

ECT-SB, ECT-SBI, ECT-SBN 120



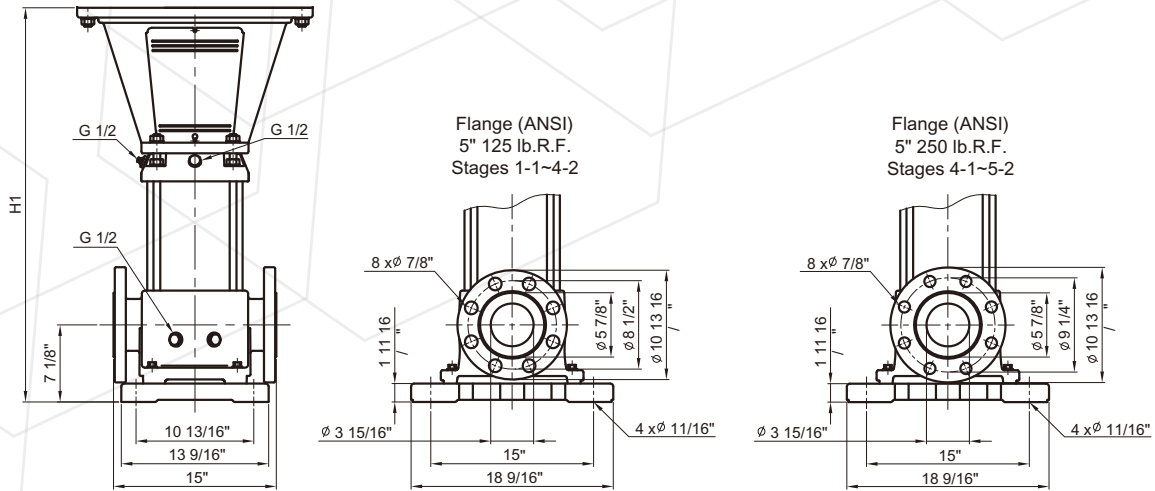
ECT-SB, ECT-SBI, ECT-SBN

Technical Data



ECT PUMP

ECT-SB 120



Pump type	Recommend motor of HP			ECT-SB			
	P ₂			NEMA Frame TEFC motors	NEMA Frame ODP motors	Dimension [inch]	Weights[lbs]
	[HP]	[kW]	[PH]			ANSI flange	ANSI flange
ECT-SB 120-1-1	20	15	3	254TC	254TC	H1 32.83	246.94
ECT-SB 120-1	25	18.5	3	284TSC	284TSC	32.83	249.28
ECT-SB 120-2-2	40	30	3	286TSC	286TSC	38.96	270.58
ECT-SB 120-2-1	40	30	3	286TSC	286TSC	38.96	270.80
ECT-SB 120-2	50	37	3	326TSC	324TSC	38.96	288.38
ECT-SB 120-3-2	60	45	3	364TSC	324TSC	45.08	309.44
ECT-SB 120-3-1	60	45	3	364TSC	324TSC	45.08	309.61
ECT-SB 120-3	75	55	3	365TSC	364TSC	45.55	364.28
ECT-SB 120-4-2	75	55	3	365TSC	364TSC	51.67	385.32
ECT-SB 120-4-1	100	75	3	405TSC	365TSC	51.67	385.49
ECT-SB 120-4	100	75	3	405TSC	365TSC	51.67	385.67
ECT-SB 120-5-2	100	75	3	405TSC	365TSC	57.80	407.01

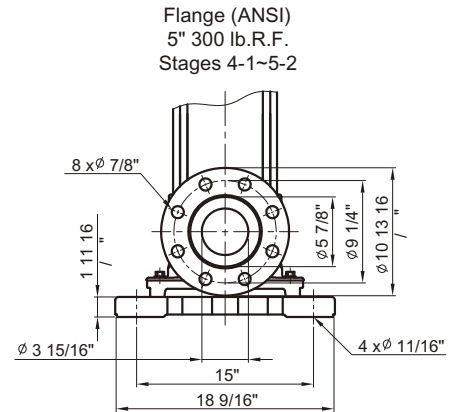
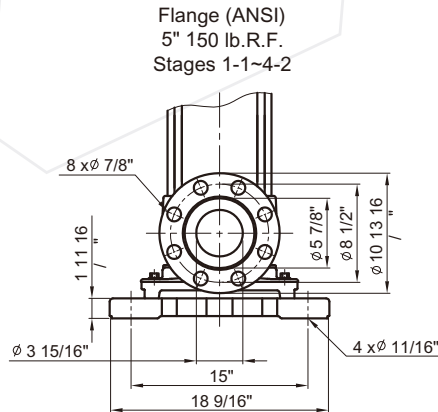
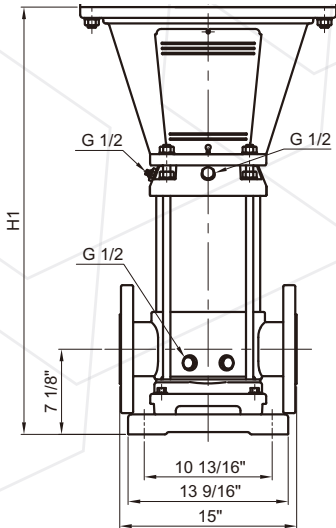
ECT-SB, ECT-SBI, ECT-SBN

Technical Data



ECT PUMP

ECT-SBI / ECT-SBN 120



Pump type	Recommend motor of HP			ECT-SBI, ECT-SBN			
	P ₂			NEMA Frame TEFC motors	NEMA Frame ODP motors	Dimension [inch]	Weights[lbs]
	[HP]	[kW]	[PH]			ANSI flange	ANSI flange
ECT-SBI / N 120-1-1	20	15	3	254TC	254TC	32.95	204.36
ECT-SBI / N 120-1	25	18.5	3	284TSC	284TSC	32.95	206.71
ECT-SBI / N 120-2-2	40	30	3	286TSC	286TSC	39.07	237.10
ECT-SBI / N 120-2-1	40	30	3	286TSC	286TSC	39.07	237.32
ECT-SBI / N 120-2	50	37	3	326TSC	324TSC	39.07	254.99
ECT-SBI / N 120-3-2	60	45	3	364TSC	324TSC	45.20	276.18
ECT-SBI / N 120-3-1	60	45	3	364TSC	324TSC	45.20	276.35
ECT-SBI / N 120-3	75	55	3	365TSC	364TSC	45.67	331.35
ECT-SBI / N 120-4-2	75	55	3	365TSC	364TSC	51.79	352.87
ECT-SBI / N 120-4-1	100	75	3	405TSC	365TSC	51.79	353.05
ECT-SBI / N 120-4	100	75	3	405TSC	365TSC	51.79	353.22
ECT-SBI / N 120-5-2	100	75	3	405TSC	365TSC	57.91	374.48

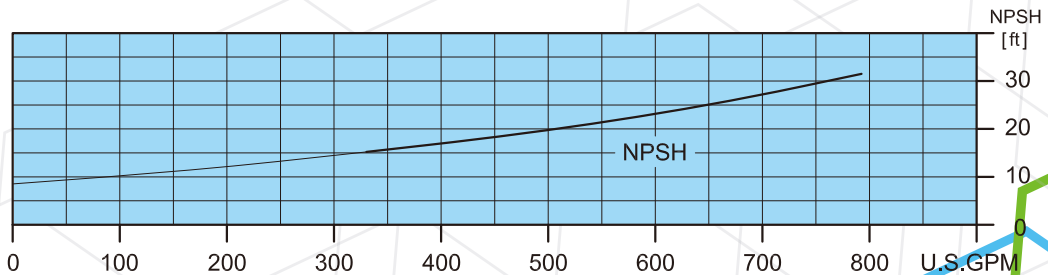
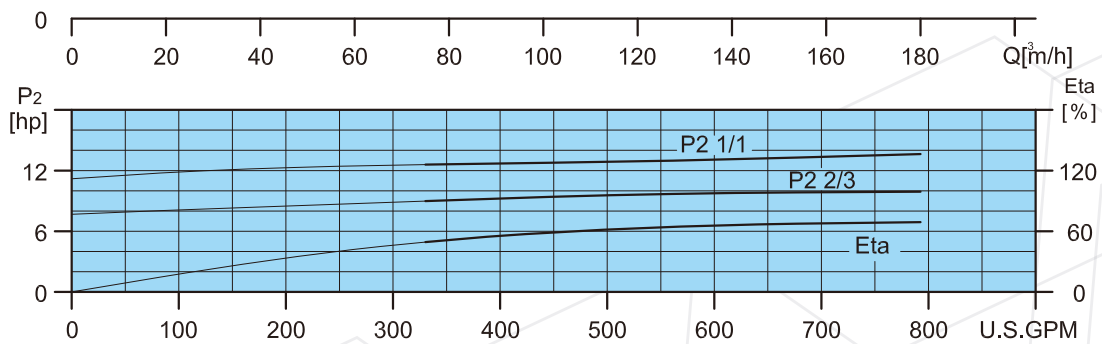
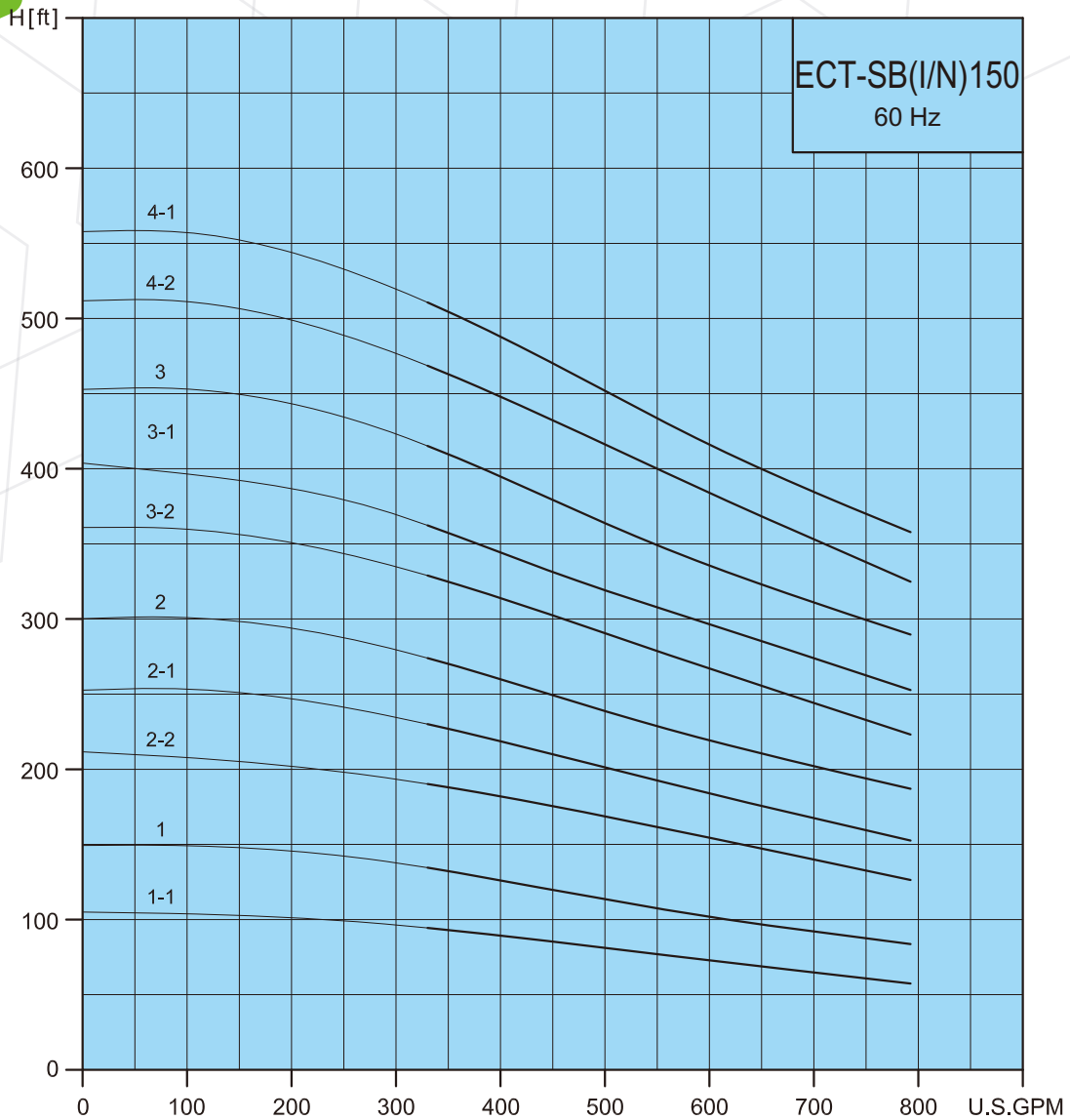
ECT-SB, ECT-SBI, ECT-SBN

Performance Curves



ECT PUMP

ECT-SB, ECT-SBI, ECT-SBN 150



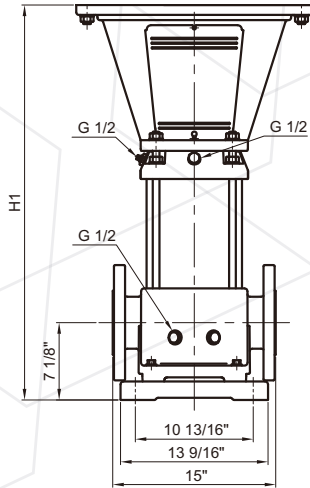
ECT-SB, ECT-SBI, ECT-SBN

Technical Data

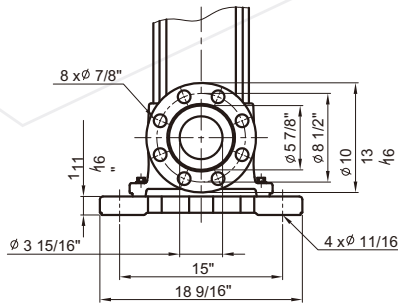


ECT PUMP

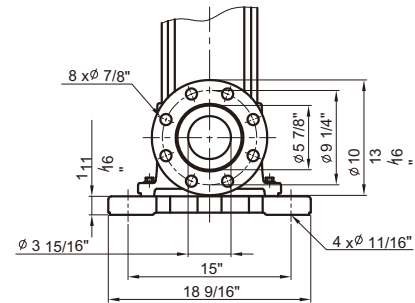
ECT-SB 150



Flange (ANSI)
5" 125 lb.R.F.
Stages 1-1~3



Flange (ANSI)
5" 250 lb.R.F.
Stages 4-1~4-2



Pump type	Recommend motor of HP			ECT-SB			
	P ₂			NEMA Frame TEFC motors	NEMA Frame ODP motors	Dimension [inch]	Weights[lbs]
	[HP]	[kW]	[PH]			ANSI flange	ANSI flange
ECT-SB 150-1-1	25.0	18.5	3	284TSC	284TSC	H1	249.13
ECT-SB 150-1	30.0	22	3	286TSC	284TSC	32.83	249.24
ECT-SB 150-2-2	40.0	30	3	286TSC	286TSC	38.96	270.61
ECT-SB 150-2-1	50.0	37	3	326TSC	324TSC	38.96	288.05
ECT-SB 150-2	60.0	45	3	364TSC	324TSC	38.96	288.20
ECT-SB 150-3-2	75.0	55	3	365TSC	364TSC	45.55	364.08
ECT-SB 150-3-1	75.0	55	3	365TSC	364TSC	45.55	364.11
ECT-SB 150-3	100.0	75	3	405TSC	365TSC	45.55	364.19
ECT-SB 150-4-2	100.0	75	3	405TSC	365TSC	51.67	385.67
ECT-SB 150-4-1	100.0	75	3	405TSC	365TSC	51.67	385.76

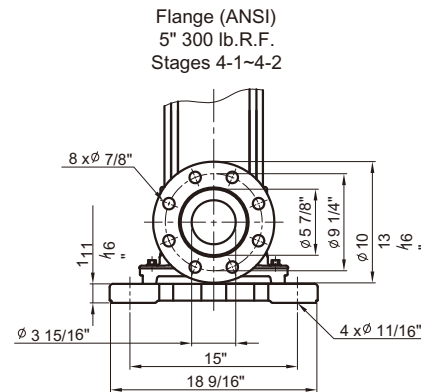
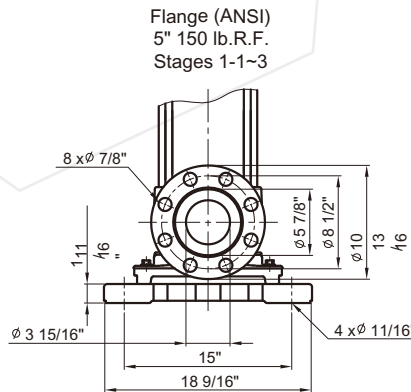
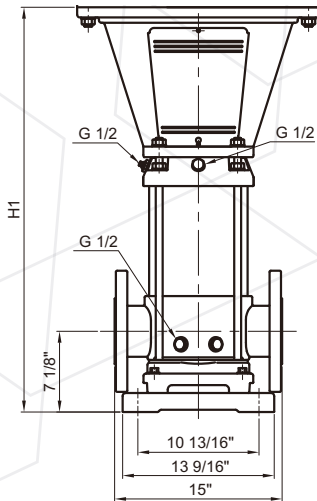
ECT-SB , ECT-SBI , ECT-SBN

Technical Data



ECT PUMP

ECT-SBI / ECT-SBN 150



Pump type	Recommend motor of HP			ECT-SBI, ECT-SBN			
	P ₂			NEMA Frame TEFC motors	NEMA Frame ODP motors	Dimension [inch]	Weights[lbs]
	[HP]	[kW]	[PH]			ANSI flange H1	ANSI flange
ECT-SBI / N 150-1-1	25.0	18.5	3	284TSC	284TSC	32.95	214.22
ECT-SBI / N 150-1	30.0	22	3	286TSC	284TSC	32.95	214.75
ECT-SBI / N 150-2-2	40.0	30	3	286TSC	286TSC	39.07	235.85
ECT-SBI / N 150-2-1	50.0	37	3	326TSC	324TSC	39.07	253.36
ECT-SBI / N 150-2	60.0	45	3	364TSC	324TSC	39.07	253.47
ECT-SBI / N 150-3-2	75.0	55	3	365TSC	364TSC	45.67	329.61
ECT-SBI / N 150-3-1	75.0	55	3	365TSC	364TSC	45.67	329.74
ECT-SBI / N 150-3	100.0	75	3	405TSC	365TSC	45.67	329.83
ECT-SBI / N 150-4-2	100.0	75	3	405TSC	365TSC	51.79	349.33
ECT-SBI / N 150-4-1	100.0	75	3	405TSC	365TSC	51.79	349.41