



ECT-HW series **ECT-HWS series** **ECT-HH series**

ECT PUMP
50 / 60Hz

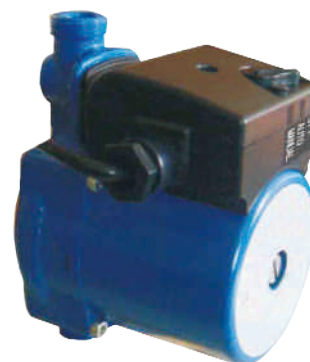
Hot Water Circulator Pump **Booster Pump Of Water Heater**



ECT-HW



ECT-HWS



ECT-HH

ECT-HW and ECT-HWS and ECT-HH series

Hot water pumps constitute a complete range of 3-speed circulator pumps, available both in 50 and 60Hz.

The pumps can be used in both open and closed systems.

ECT-HW & ECT-HH pumps are of the canned-motor type, i.e. pump and motor form an integral unit without a shaft seal and with only two ceramic bearing for sealing. The bearings are lubricated by the pumped liquid.

APPLICATIONS

Hot water circulator pumps are designed for circulation of liquids in heating and air-conditioning systems.

- One- and two-pipe heating systems
- Main pumps
- Zone pumps
- Boiler shunt pumps
- Calorifiers
- Underfloor heating systems
- Solar heating systems
- Heat pump systems
- Geothermal heating systems
- Heat recovery systems
- Two-pipe air-conditioning systems
- Pumps for refrigeration units

FEATURES

- Low noise
- Low energy
- Available with corrosion-resistant stainless steel pump casing
- High volume of water
- Easy to installation

OPTIONAL ACCESSORIES



Plastic Base



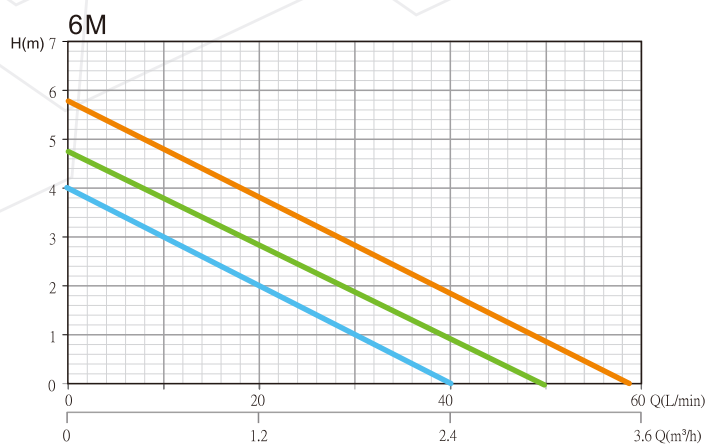
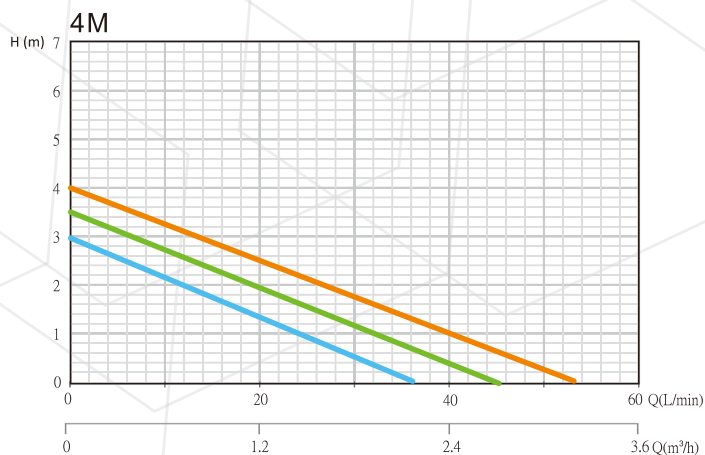
ECT-HW

Hot Water Circulator Pump



ECT PUMP

PERFORMANCE CURVES

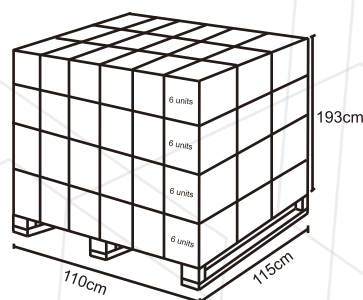
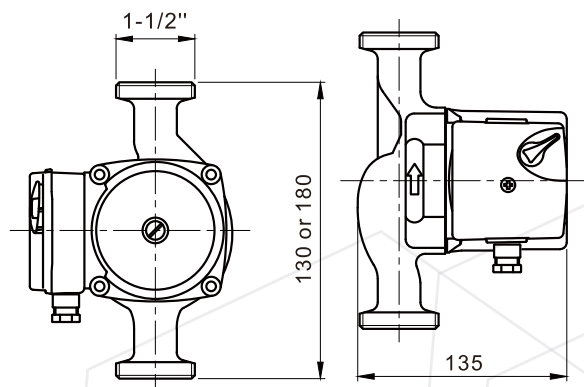


SPECIFICATIONS

Model	HZ	Phase	Voltage	Power	Head	Flow	Current	input/output	Weight	Carton per pallet	Pallet size
ECT-HW-25-40-130	50	1φ	220V-240V	62.4/53.7/43.7	4	3.2	0.27	1-1/2"	2.3	6	60
ECT-HW-25-40-180	50	1φ	220V-240V	62.4/53.7/43.7	4	3.2	0.27	1-1/2"	2.6	6	60
ECT-HW-25-60-130	50	1φ	220V-240V	73.5/59.7/46.6	6	3.5	0.32	1-1/2"	2.3	6	60
ECT-HW-25-60-180	50	1φ	220V-240V	73.5/59.7/46.6	6	3.5	0.32	1-1/2"	2.6	6	60

Model	HZ	Phase	Voltage	Power	Head	Flow	Current	input/output	Weight	Carton per pallet	Pallet size
ECT-HW-25-60-130	60	1φ	110V	80.0/65.0/50.0	6	3.5	0.37	1-1/2"	2.3	6	60
ECT-HW-25-60-180	60	1φ	110V	80.0/65.0/50.0	6	3.5	0.37	1-1/2"	2.6	6	60
ECT-HW-25-60-130	60	1φ	110V	80.0/65.0/50.0	6	3.5	0.73	1-1/2"	2.3	6	60
ECT-HW-25-60-180	60	1φ	110V	80.0/65.0/50.0	6	3.5	0.73	1-1/2"	2.6	6	60

DIMENSIONS



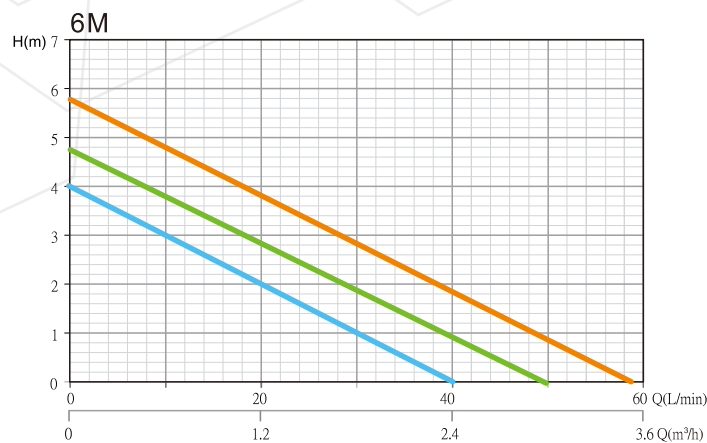
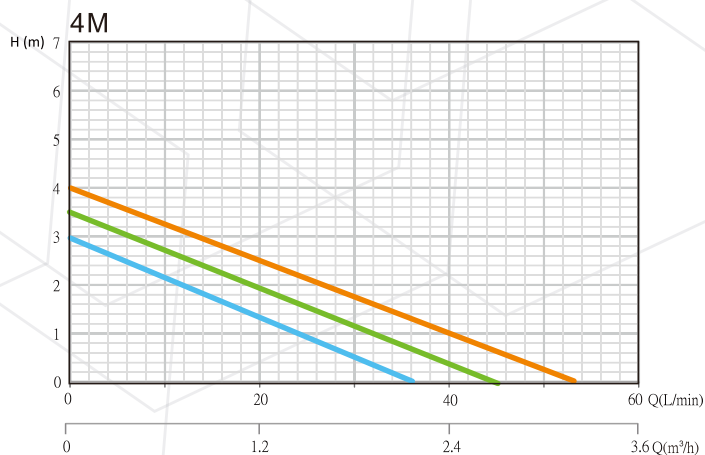
ECT-HWS

Mini Booster Pump



ECT PUMP

PERFORMANCE CURVES

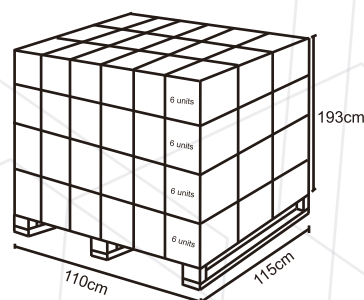
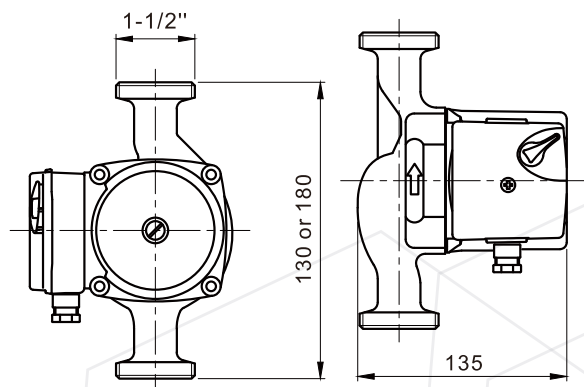


SPECIFICATIONS

Model	HZ	Phase	Voltage	Power	Head	Flow	Current	input/output	Weight	Carton per pallet	Pallet size
ECT-HWS-25-40-130	50	1φ	220V-240V	62.4/53.7/43.7	4	3.2	0.27	1-1/2"	2.3	6	60
ECT-HWS-25-40-180	50	1φ	220V-240V	62.4/53.7/43.7	4	3.2	0.27	1-1/2"	2.6	6	60
ECT-HWS-25-60-130	50	1φ	220V-240V	73.5/59.7/46.6	6	3.5	0.32	1-1/2"	2.3	6	60
ECT-HWS-25-60-180	50	1φ	220V-240V	73.5/59.7/46.6	6	3.5	0.32	1-1/2"	2.6	6	60

Model	HZ	Phase	Voltage	Power	Head	Flow	Current	input/output	Weight	Carton per pallet	Pallet size
ECT-HWS-25-60-130	60	1φ	110V	80.0/65.0/50.0	6	3.5	0.37	1-1/2"	2.3	6	60
ECT-HWS-25-60-180	60	1φ	110V	80.0/65.0/50.0	6	3.5	0.37	1-1/2"	2.6	6	60
ECT-HWS-25-60-130	60	1φ	110V	80.0/65.0/50.0	6	3.5	0.73	1-1/2"	2.3	6	60
ECT-HWS-25-60-180	60	1φ	110V	80.0/65.0/50.0	6	3.5	0.73	1-1/2"	2.6	6	60

DIMENSIONS



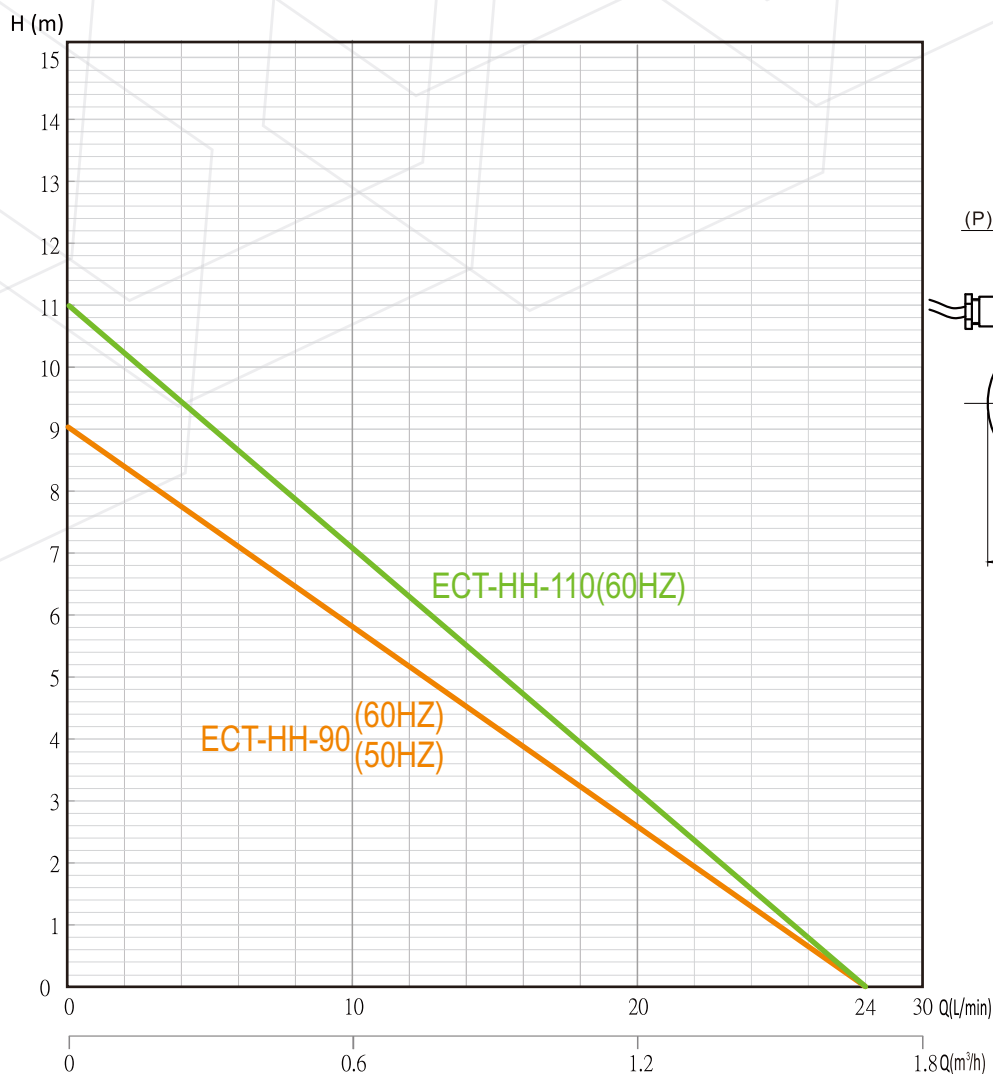
ECT-HH



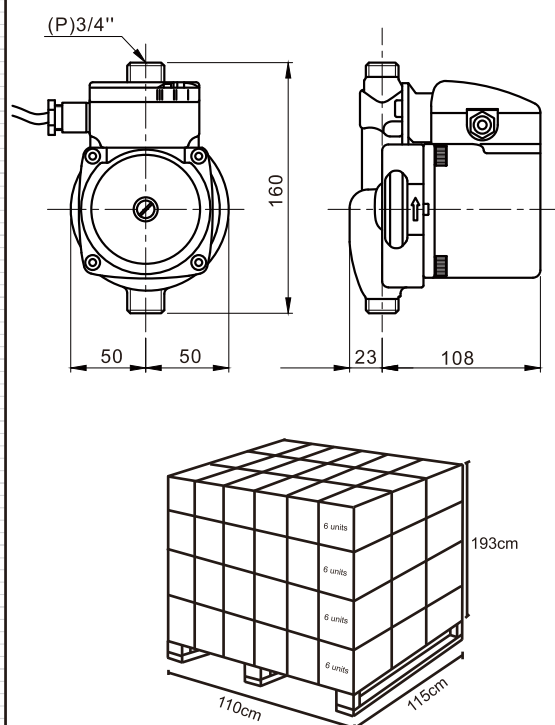
ECT PUMP

Stainless Steel Hot Water Circulator Pump

PERFORMANCE CURVES



DIMENSIONS



SPECIFICATIONS

Model	HZ	Phase	Voltage	Power	Head	Flow	Current	input/output	Weight	Carton per pallet	Pallet size
ECT-HH-15-90-160	50	1φ	220V-240V	110	9	1.5	0.5	3/4"	2.5	6	60

Model	HZ	Phase	Voltage	Power	Head	Flow	Current	input/output	Weight	Carton per pallet	Pallet size
ECT-HH-15-90-160	60	1φ	110V	110	9	1.5	1	3/4"	2.5	6	60
ECT-HH-15-90-160	60	1φ	110V	110	9	1.5	0.5	3/4"	2.5	6	60
ECT-HH-15-110-160	60	1φ	110V	120	11	1.5	0.5	3/4"	2.5	6	60
ECT-HH-15-110-160	60	1φ	110V	120	11	1.5	1.05	3/4"	2.5	6	60