

# ECT-BV series 60Hz

## Submersible Drainage Pumps (Maximum Solid Passage 50mm)



**ECT PUMP**



### Pump Data

1. Impeller : Open Impeller
2. Shaft Seal / Mechanical : Double Seals
3. Bearing : Double-shielded Ball Bearing

### Operation Conditions

1. Fluid Temperature : 0 to 40°C(104°F)

### Motor Data

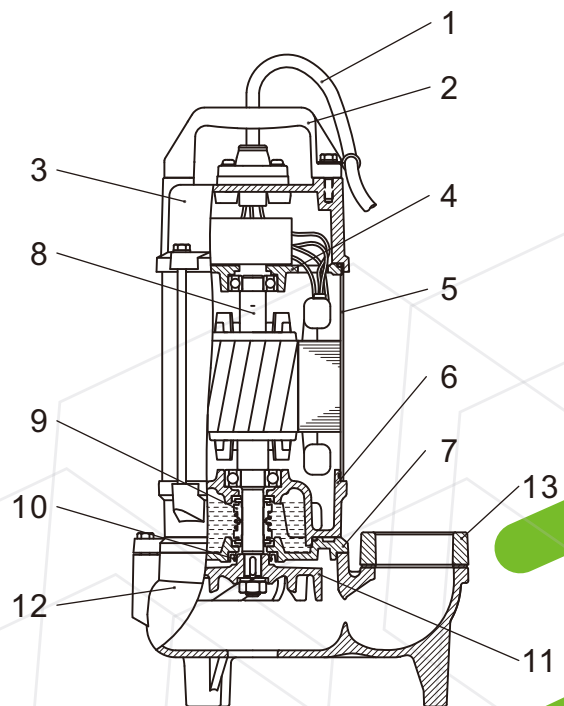
1. Motor Type : 2 pole, dry type
2. Frequency : 60Hz
3. Nominal Speed : 3450 rpm
4. Insulation Class : F class (155°C)
5. Enclosure Protection Class : IP68
6. Protection Device :  
Thermal Protector (Single phase)  
Overload Protector (Three phase)

### APPLICATIONS

1. Basement water removal
2. Waste water drainage
3. Water transfer
4. Sump/effluent handling
5. Dewatering
6. Fish pond & fountain circulation
7. Factory waste water handling

### MATERIAL CONSTRUCTION

No.	Part	Materials
1	Cable	UL
2	Handle	Nylon6+30GH
3	Motor Cover	FC200
4	Bearing Cap	FC200
5	Motor Frame	AISI 304
6	Bearing Bracket	FC200
7	M.Seal Bracket	FC200
8	Shaft	AISI 410
9	Mechanical Seal	CA/CE , SIC / SIC
10	Oil Seal	NER70
11	Impeller	FC250
12	Pump Casing	FC200
13	Flange	FC200

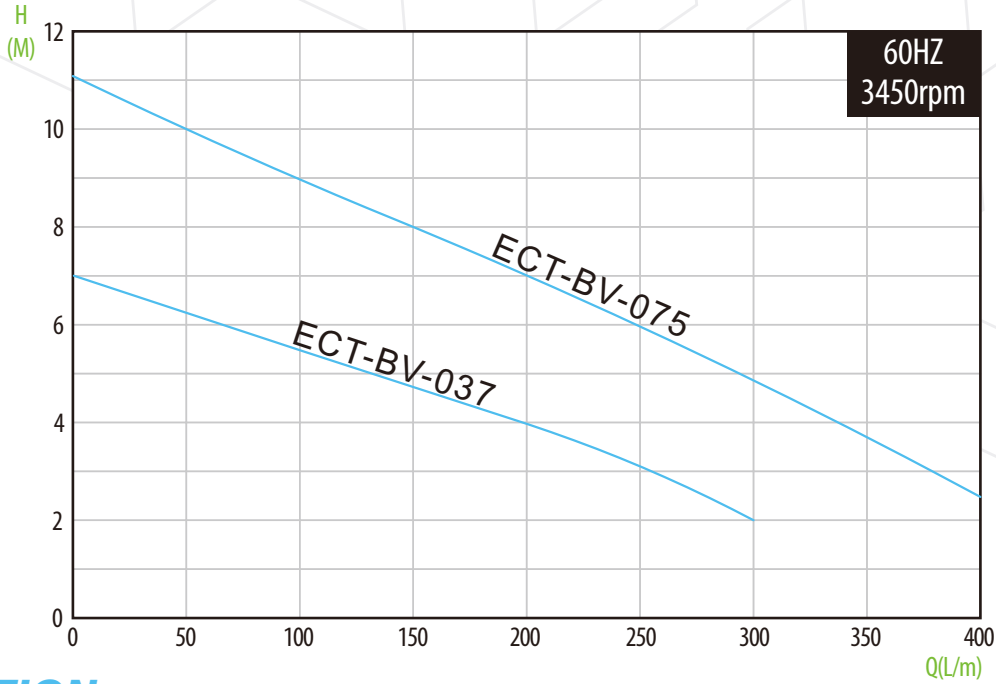




# ECT PUMP

# ECT-BV series Submersible Drainage Pumps (Maximum Solid Passage 50mm)

## PERFORMANCE CURVE



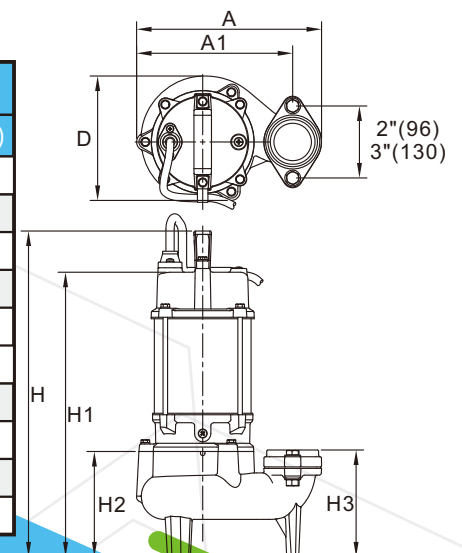
## SPECIFICATION

Model	Power HP(kW)	Discharge Inch(mm)	Nominal Current(A)		Capacitoret(UF / V)		Std. Head M	Std. Flow LPM	Max. Head M	Max. Flow LPM	Weight KG
			110 - 127V	220 - 230V	110 - 127V	220 - 230V					
Single Phase & Auto Float Switch											
ECT-BV(A)-1037-50/80	0.5 (0.37)	2"/3" (50/80)	6.6 - 5.7	3.3 - 3.1	50 / 250	12 / 450	4	200	7	300	19(19.5)
ECT-BV(A)-1075-50/80	1 (0.75)	2"/3" (50/80)	10.6 - 9.2	5.3 - 4.9	80 / 250	20 / 450	6	250	11	400	20.7(21.2)

Model	Power HP(kW)	Discharge Inch(mm)	Nominal Current [A]			Std. Head M	Std. Flow LPM	Max. Head M	Max. Flow LPM	Weight KG
			220 - 230V	380 - 440V	460 - 480V					
Three Phase										
ECT-BV-3037-50/80	0.5 (0.37)	2"/3" (50/80)	2.3 - 2.2	1.3 - 1.2	1.3 - 1.2	4	200	7	300	18
ECT-BV-3075-50/80	1 (0.75)	2"/3" (50/80)	3.4 - 3.3	2.1 - 2.0	1.9 - 1.7	6	250	11	400	19.5

## SPECIFICATION

Model	A	A1	D	H	H1	H2	H3	Solid Passage (mm)	Cable	
									M	UL (AWG)
Single Phase & Auto Float Switch										
ECT-BV(A)-1037-50	247	208	166	437	383	141	143	50	10	16AWGx3C
ECT-BV(A)-1037-80	283	227	166	437	383	141	143	50	10	16AWGx3C
ECT-BV(A)-1075-50	247	208	166	457	403	141	143	50	10	16AWGx3C
ECT-BV(A)-1075-80	283	227	166	457	403	141	143	50	10	16AWGx3C
Three Phase										
ECT-BV-3037-50	247	208	166	437	383	141	143	50	10	16AWGx4C
ECT-BV-3037-80	283	227	166	437	383	141	143	50	10	16AWGx4C
ECT-BV-3075-50	247	208	166	457	403	141	143	50	10	16AWGx4C
ECT-BV-3075-80	283	227	166	457	403	141	143	50	10	16AWGx4C



# ECT-BV series Guide Rail series

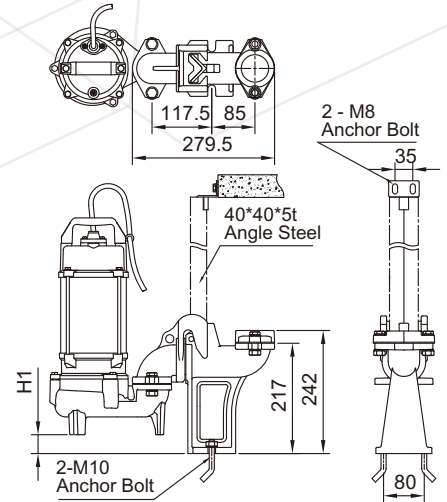


## ECT PUMP

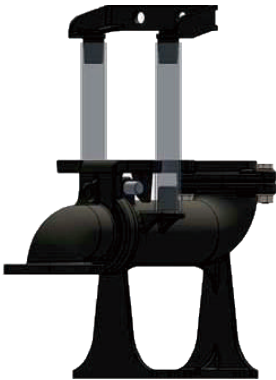
### TS-50



Pump Model	DN (mm)	Dimensions H1 (mm)
ECT-BV Series For 0.5 & 1 HP	50	15



### TSL-80



Pump Model	DN (mm)	Dimensions H1 (mm)
ECT-BV Series For 0.5 & 1 HP	80	10

